

# AN ANALYSIS OF G+7 IRREGULAR BUILDING USING NON-LINEAR STATIC AND DYNAMIC ANALYSIS

## Abstract

Urbanization and industrialization have paved the way for the rise of towering multi-story buildings in uneven regions all over a developing country such as India because urbanization and industrialization have paved the way for the growth of towering multi-story structures. Due to their irregular and asymmetrical vertical and even plane architecture, structures formed in bumpy zones differ from those developed on level ground. These constructions are also far more susceptible to earthquake forces in uneven terrain. Thinking about how buildings behave on slanting terrain is the main objective of the current effort. Unlike buildings built on flat land, structures built on sloped terrain require special architectural considerations. The structures on slopes differ from those in fields. When affected by seismic earthquakes, they are torsional-linked, extremely unexpected, and asymmetrical in even and vertical planes. As a result, they are unable to separate injuries. This paper has made an effort to analyze how sporadic multi-story construction on an inclined ground of 60 degrees behaves while considering various earthquake zones, such as zone IV. The models are readied using STAAD Pro and REVIT. STAAD Pro offers advanced and adaptable analysis for specialized applications including gravity loads and earthquake analysis.

**Keywords:** skyscraper multi-story structures; unsymmetrical structure; STAAD Pro; REVIT

## Authors

### **Koyndrik Bhattacharjee**

Department of Civil Engineering,  
Dr. B. C. Roy Engineering College  
Durgapur, India.

### **Arijit Kumar Banerji**

Department of Civil Engineering,  
Dr. B. C. Roy Engineering College  
Durgapur, India.

### **Satabdi Saha**

Department of Civil Engineering  
Elite College of Engineering  
Kolkata, India.

### **Chanchal Das**

Department of Civil Engineering,  
Dr. B. C. Roy Engineering College  
Durgapur, India.

### **Md. Hamjala Alam**

Department of Civil Engineering  
Dr. B. C. Roy Engineering College  
Durgapur, India.

## I. INTRODUCTION

The most awful and unpredictable act of nature is a seismic quake. When a structure is exposed to seismic pressures, it does not always endanger human life since the design damage causes the building to collapse, endangering the lives of its occupants and property. The continuous quakes' widespread devastation of both low- and high-rise buildings forces an evaluation, particularly in a developing nation like India. Design subjected to seismic/quake forces are always susceptible to damage, and if it happens on a skewed structure—such as an incline that tends to the ground—the chances of harm increase significantly because of extended sidelong powers on short segments on the extreme side, which encourages the use of plastic turns. Designs on slopes differ from those on fields because they are asymmetrical in both an upward and a level plane. India's northern and northeastern regions feature large slanting areas classified as seismic zones IV and V. The earthquakes in Nepal (2015), Doda (2013), and Sikkim (2011) all caused enormous damage. Due to the rapid urbanization, addition in financial turn of events, and consequent growth in population thickness, there is interest in the advancement of multi-story RC enclosed structures in this area. The progress of the buildings on the sloping ground is required due to the need for a plain region. The current work uses STAD Pro and REVIT to demonstrate a G+7-storeyed maintained design with a tendency of  $30^\circ$  to the ground subject to sinusoidal ground development. When a design is exposed to seismic pressures, it does not immediately affect living things. However, the building damage causes the design to fail, affecting the people living there and their property. The recurrent earthquakes that cause massive harm to low and towering structures call for an examination, particularly in a developing nation like India. Design subject to seismic/quake forces is always at risk of injury, and if it happens on a skewed structure, such as an incline that is inclined to the ground, the chances of injury increase noticeably because of prolonged equal forces on small portions on the intense side, which encourages the development of plastic turns. STAAD Pro features a cutting-edge user interface, visualization tools, and strong analysis and design engines with advanced finite element and dynamic analysis capabilities. Designing low and high-rise buildings, culverts, petrochemical plants, tunnels, bridges, piles, and other structures out of steel, concrete, wood, aluminium, and cold-formed steel is possible using STAAD Pro, the professional's choice. This covers the development, evaluation, design, visualization, and outcome validation of models.

## II. LITERATURE REVIEW

B. Gireesh [1] used the Staad Pro program to study the structural and seismic analyses of the G+7 construction. He used IS 1893 (Part 1) - 2007 as an Indian standard code for design base shear. According to IS 1893:2002, multiple analytical criteria depending on the building's height, zone of location, and importance were stated for the earthquake-resistant criterion. Various loads were applied after the project was launched, including dead loads, live loads, wind loads, snow loads, and earthquake loads, for which the analysis will be performed. The structure was created for the Hyderabad region under Zone II. V. Varalakshmi [2] a multi-story G+5 skyscraper in Kukatpally, Hyderabad, India, and its design and analysis. The design and analysis of columns, beams, footings, and slabs were performed using the renowned civil engineering tool STAAD Pro. The soil's capacity for safe bearing was evaluated. P. Jayachandran [3] G+4 building design and analysis in Salem, Tamil Nadu, India. The research analyzes and designs footings, columns, beams, and slabs using the STAAD Pro and RCC Design Suit software. L.G. Karulkar [4] G+5 building design

and analysis in an earthquake zone employing composite structures. Three-dimensional modeling and analysis of structures are done using the SAP 2000 application. When studying composite and RCC structures, equivalent static methodologies and response spectrum analysis approaches are used. The composite structure is shown to be more economical after comparing the results. Using the most cost-effective column technique, M. Mallikarjun (2016) [5] researched the study and design of a multi-story residential structure with ung-2+G+10. It was discovered that because the research was conducted using the most cost-effective column approach, this was done by lowering the size of columns on top floors because the load was more significant at the bottom level. The dead and live loads were applied to various structural components, including slabs and beams. Columns were oriented in a greater span in a longer direction to save money by reducing the amount of bending and steel area needed to support them. According to Mohit Sharma (2015) [6], the building has a G+30-story conventional reinforced concrete frame. Multi-story buildings underwent dynamic analysis. A selected building's overall height, including the depth of the foundation, is 114 m. These structures have a plan area of 25 m by 45 m, a height of 3.6 m per story, and a foundation depth of 2.4 m. STAAD-Pro software was used for static and dynamic analysis on a computer using the design parameters specified in IS:1893-2002 Part-1 for zones 2 and 3. The Axial Force values were determined to be comparable to those from static and dynamic analysis.

### III. OBJECTIVE OF PRESENT STUDY

The purpose of this research is to study P-Delta and Pushover analysis which are very important in the designing and Analysis of multi-storeyed buildings.

1. The building should survive significant earthquakes that could be anticipated during its service life with damage that is within acceptable bounds.
2. Study of P-Delta effect on building.
3. Study of Push over analysis of building.
4. Check for stability of building in a hilly slope.

### IV. METHODOLOGY

**Proposed Tool and Methodology:** STAAD Pro will analyse and design a multi-story residential structure from various angles in this project. A thorough structural analysis is necessary for structural designing so that the structure may be designed. However, manual calculations are not always feasible, which is why the necessity for programming tools was discovered. For this purpose, several tools were developed, the most popular of which is STAAD Pro, which enables structural and seismic analysis prior to construction. STAAD Pro may be used to compute loads and their combinations, analyse structures, and design structures based on the analysis for high-rise buildings.

- **P-Delta Effect on Building:** The structure may undergo greater lateral displacements as a result of gravity loading when a building is subjected to seismic lateral stress that causes it to deflect. The second-order influence of vertical loads operating onto a laterally displaced structure is known as the P- $\Delta$  effect, where P is the total vertical load and  $\Delta$  is the lateral displacement with respect to the ground. The P- $\Delta$  effect illustrates how the mass of a structure moves under the influence of a weight P

through a displacement  $\Delta$ , creating a moment at the base of the structure.

- **Pushover analysis on Building:** Pushover analysis is a static method that uses a streamlined nonlinear approach to calculate seismic structural deformations. After an earthquake, structures reconstruct on their own. As individual ones lose way or fail, the dynamic forces acting on the structure are transmitted to other components.

## V. P-DELTA ANALYSIS OF G+7 BUILDING BY USING STAAD PRO

### 1. Building Parameters

**Table 1: Structural Data and Parameters Adopted for Model**

Column	400mm x500mm
Beam	500mmx750mm
Material used	Reinforcecement concrete
Concrete Frame	SMRF
Main Wall	230mm
Reinforcement used	HYSD
Slab thickness	150mm
Unit weight of concrete	25KN/CUM
Concrete grade	M40
Steel Grade	Fe500
Floor to floor height	3.5m
Number of floors	G+7
No. of beam + column	220 + 142
Length of plan in x-direction	20m
Length of plan in z-direction	18m

## 2. Plan of Residential Building on AUTO CAD and REVIT

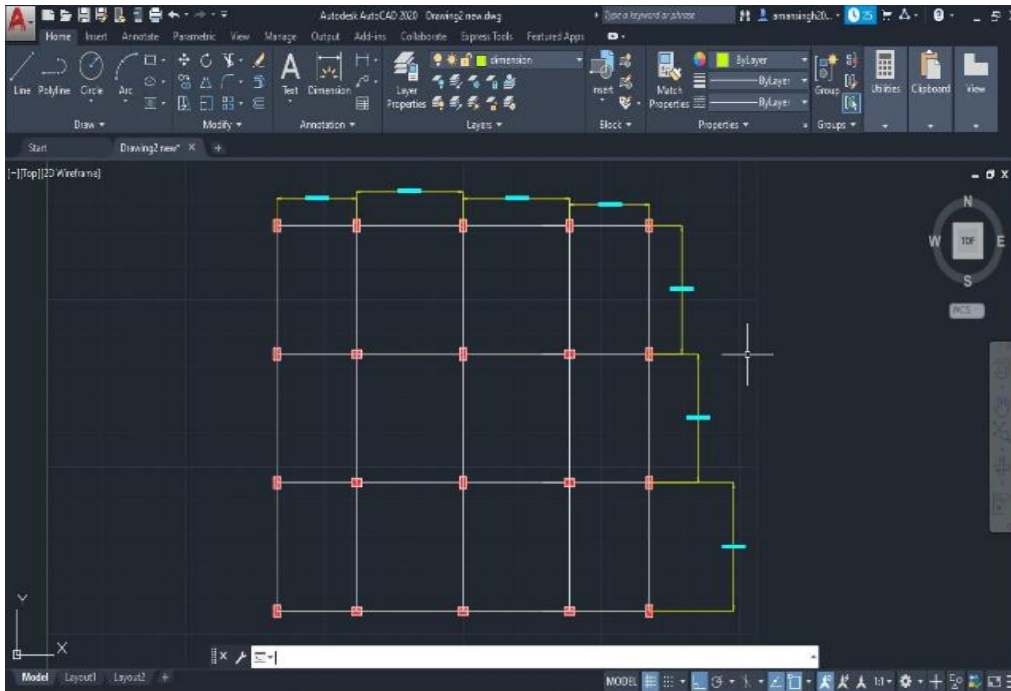


Figure 1: Column layout of Structure

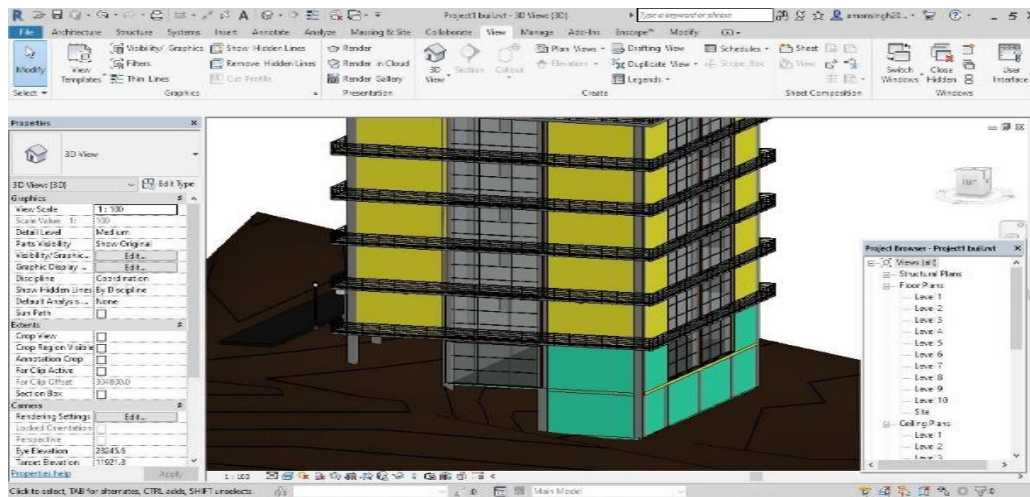


Figure 2: Isometric view of the irregular building

## 3. Loads acting and their calculation

- Dead Load

**Table 2: Dead Load Parameter**

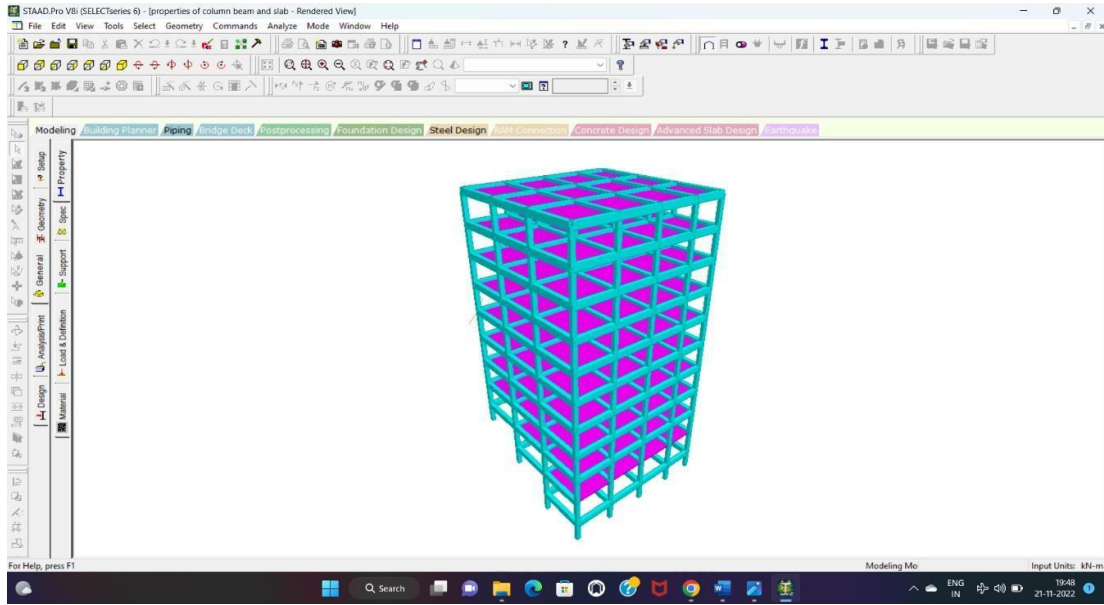
Dead load of different components	Load
Slab	3.75KN/m <sup>2</sup>
Floor finish	1.575KN/m <sup>2</sup>
Ceiling Plaster	0.168KN/m <sup>2</sup>
Wall	13.248KN/m
Both side plaster wall	1.96KN/m
Parapetwall	2.286KN/m

- **Live load:**  
For floor UDL = 3KN/m<sup>2</sup>  
For roof UDL = 2.8KN/m<sup>2</sup>  
Point load = 1.8 KN
- **Wind load:**  
 $P_z = 0.6V_z^2$   
 $V_z = V_b \times k_1 \times k_2 \times k_3 \times k_4$   
 $V_b = 47\text{m/s}$  (Darjeeling)  
 $K_1 = \text{Risk coefficient} = 1$   
 $K_2 = \text{terrain coefficient} = 0.93$   
 $K_3 = \text{topo coefficient} = 1$   
 $K_4 = 1$   
 $V_z = 43.71 \text{ m/s}$   
 $P_z = 1.14633\text{KN/m}^2$

**Table 3: Wind loads at different height**

height (m)	K <sub>1</sub>	K <sub>2</sub>	K <sub>3</sub>	K <sub>4</sub>	V <sub>b</sub>	P <sub>z</sub> (KN/m <sup>2</sup> )
10	1	0.91	1	1	47	1.097
15	1	0.97	1	1	47	1.247
20	1	1.01	1	1	47	1.352
30	1	1.06	1	1	47	1.489
50	1	1.12	1	1	47	1.662
100	1	1.20	1	1	47	1.908
150	1	1.24	1	1	47	2.037

4. The P-Delta Analysis is carried out for the proposed unsymmetrical building resting on a hill slope.



**Figure 3:** 3-D rendering view

## 5. Results obtained from P-Delta Analysis

**Table4: Deflection obtained on Column**

<u>Groundfloor</u>	0.756mm
1 <sup>st</sup> floor	1.489mm
2 <sup>nd</sup> floor	2.131mm
3 <sup>rd</sup> floor	2.709mm
4 <sup>th</sup> floor	3.218mm
5 <sup>th</sup> floor	3.661mm
6 <sup>th</sup> floor	4.040mm
7 <sup>th</sup> floor	4.360mm
8 <sup>th</sup> floor	4.627mm

**Table 5: Deflection obtained on Beams**

Beam1	2
Beam2	2
Beam3	1

## VI. PUSHOVER ANALYSIS OF G+7 BUILDING BY USING STAAD PRO

Using the static-nonlinear analytical technique known as "pushover," a structure is subjected to gravity loading and a monotonic displacement-controlled lateral load pattern. The load is continuously increased through both elastic and inelastic behavior until an ultimate state is reached. Indicating the range of base shear brought on by earthquake loading, the configuration of the lateral load may be proportionate to the distribution of mass along the building height, mode forms, or another practical technique.

A structure with constant vertical loads and growing lateral loads is the subject of a static non-linear pushover analysis. The forces brought on by earthquakes are represented by equivalent static lateral loads. This method displays any early failure or weakness by plotting a structure's total base shear vs. top displacement. It is able to determine the collapse load and ductility capability because the study was conducted until failure. On a building frame, plastic rotation is observed, and analytically calculated lateral inelastic forces versus displacement. Finding structural faults is made possible by this type of research. It is possible to decide to retrofit after conducting such studies. There are two steps in the seismic design process. Developing an effective structural system is the first and frequently most important phase. It must be constructed carefully taking into account all significant seismic performance requirements, ranging from serviceability challenges. The seismic engineering process is currently complete. The general guidelines for the strength and stiffness objectives should be adequate to design and roughly size an effective structural system. These recommendations are predicated on a fundamental comprehension of ground motion and the features of elastic and inelastic dynamic response. Only when a structural framework has been created is it possible to build complex mathematical/physical models. It is necessary to use these models when evaluating the seismic performance of an existing system and when modifying component behaviour parameters (strength, stiffness, and deformation capacity) in order to improve performance.

In the Pushover analysis, the strength and deformation demands of design earthquakes are identified using static inelastic analysis and compared to the available capacities at the desired performance levels. Through static inelastic analysis, structural systems are assessed to determine the anticipated performance levels. The assessment of key performance parameters, including global drift, inter-story drift, inelastic element deformations (either absolute or normalized concerning a yield value), deformations between elements, and element connection forces (for elements and connections that cannot sustain inelastic deformations), form the foundation of the evaluation. The inelastic static pushover analysis can be viewed as a tool for predicting seismic force and deformation needs after earthquakes based on analysing crucial performance. The pushover is expected to show a number of reaction qualities that cannot be discovered through an elastic static or dynamic analysis.

These are some instances of such response characteristics: Axial force requirements for columns, force requirements for brace connections, and moment requirements for possibly brittle parts are examples of realistic force requirements.

1. Beam-to-column connections, shear force requirements for deep reinforced concrete spandrel beams, and shear force requirements for unreinforced masonry wall piers, among others.



2. Estimates of the deformations ask for components that must take an elastic form to release the energy applied to the structure.
3. How the behavior of the structural system is affected by the weakening of specific parts.
4. It determines the crucial areas that must be the centre of attention via detailing and where significant deformation demands are anticipated.
5. The dynamic characteristics of the elastic range will change depending on how strong the discontinuities are in the plan elevation.
6. Understory drift can be estimated by considering strength discontinuities or stiffness discontinuities in order to reduce damages and assess P-Delta impacts.

Check the load path's accuracy and completeness while considering all the structural system's components, linkages, stiff non-structural elements, and foundation system.

### Results of Pushover Analysis

**Table 6: Displacement on floors (mm)**

	$U_x$	$U_y$	$U_z$
GroundFloor	-0.789	-32.495	-0.016
1 <sup>st</sup> Floor	-1.451	-58.913	-0.155
2 <sup>nd</sup> Floor	-2.032	-81.277	-0.353
3 <sup>rd</sup> Floor	-2.569	-100.415	-0.593
4 <sup>th</sup> Floor	-2.946	-99.323	2.020
5 <sup>th</sup> Floor	-3.476	-114.945	1.283
6 <sup>th</sup> Floor	-3.856	-140.092	-1.315
7 <sup>th</sup> Floor	-4.178	-147.587	-1.476
8 <sup>th</sup> Floor	-4.686	-152.250	-1.559

## VII. RESULTS AND CONCLUSION

The P-Delta and Pushover Analysis has been carried out for a G+7 multistorey building and the following results have been found out using STAAD. Pro software. It has been observed that the maximum and minimum deflection in beam is 2.713mm and 1.728mm respectively. For the columns, the maximum and minimum deflection is 4.627mm and 0.756mm respectively. The maximum and minimum displacement is observed in pushover analysis with 152.250mm and 0.789mm the respective values.

## REFERENCES

- [1] Chung B.T., "Dynamic Behaviour of Multi-storey Buildings" Engineering Report, University of Auckland, No. 492, 1991.
- [2] CSI Analysis Reference Manual for SAP2000, ETABS, SAFE, CSI Bridge.
- [3] Dinar Yousuf, Karim Samiul, Barua Ayan, Uddin Ashraf, "P-Delta Effect in Reinforced Concrete

- structures of Rigid Joint”, ISOR Journal of Mechanical and Civil Engineering, Vol. 10, December 2013.
- [4] Dubey S. K., Sangamnerkar Prakash, Soni Deepak, “Dynamic Behavior of Reinforced Concrete Framed Buildings”
- [5] E. L. Wilson and A. Habibullah, "Static and Dynamic Analysis of Multi-Story Buildings Including P-Delta Effects", 1987.
- [6] Konapure C. G., Dhanshetti P. V., “Effect of P-Delta Action on Multi-Storey Buildings”, International Journal of Engineering
- [7] Research & Technology (IJERT), Vol. 4, January 2015. D.N. Shinde, Nair Veena V, Pudale Yojana M, “ PUSHOVER ANALYSIS OF MULTY STORY BUILDING International Journal of Research in Engineering and Technology eISSN: 2319-1163.

## VIII. APPENDIX

Proprietary Program of Bentley Systems, Inc.

### 1. STAAD SPACE

INPUT FILE: C:\SProV8i SS6\STAAD\Plugins\P DELTA OF DL+LL+WL.STD

### 2. START JOB INFORMATION

3. ENGINEER DATE 20-NOV-22

4. END JOB INFORMATION

5. INPUT WIDTH 79

6. UNIT METER KN

7. JOINT COORDINATES

8. 1 0 0 0; 2 0 0 6; 3 0 0 12; 4 0 0 18; 5 5 0 0; 6 5 0 6; 7 5 0 12; 8 5 0 18

9. 9 10 0 0; 10 10 0 6; 11 10 0 12; 12 10 0 18; 13 15 0 0; 14 15 0 6; 15 15 0 12

10. 16 15 0 18; 17 19 0 0; 18 19 0 6; 19 19 0 12; 20 19 0 18; 21 0 3.5 0

11. 22 0 3.5 6; 23 0 3.5 12; 24 0 3.5 18; 25 5 3.5 0; 26 5 3.5 6; 27 5 3.5 12

12. 28 5 3.5 18; 29 10 3.5 0; 30 10 3.5 6; 31 10 3.5 12; 32 10 3.5 18; 33 15 3.5 0

13. 34 15 3.5 6; 35 15 3.5 12; 36 15 3.5 18; 37 19 3.5 0; 38 19 3.5 6

14. 39 19 3.5 12; 40 19 3.5 18; 41 0 7 0; 42 0 7 6; 43 0 7 12; 44 0 7 18; 45 5 7 0

15. 46 5 7 6; 47 5 7 12; 48 5 7 18; 49 10 7 0; 50 10 7 6; 51 10 7 12; 52 10 7 18

16. 53 15 7 0; 54 15 7 6; 55 15 7 12; 56 15 7 18; 57 19 7 0; 58 19 7 6; 59 19 7 12

17. 60 19 7 18; 61 0 10.5 0; 62 0 10.5 6; 63 0 10.5 12; 64 0 10.5 18; 65 5 10.5 0

18. 66 5 10.5 6; 67 5 10.5 12; 68 5 10.5 18; 69 10 10.5 0; 70 10 10.5 6

19. 71 10 10.5 12; 72 10 10.5 18; 73 15 10.5 0; 74 15 10.5 6; 75 15 10.5 12

20. 76 15 10.5 18; 77 19 10.5 0; 78 19 10.5 6; 79 19 10.5 12; 80 19 10.5 18

21. 81 0 14 0; 82 0 14 6; 83 0 14 12; 84 0 14 18; 85 5 14 0; 86 5 14 6; 87 5 14 12

22. 88 5 14 18; 89 10 14 0; 90 10 14 6; 91 10 14 12; 92 10 14 18; 93 15 14 0

23. 94 15 14 6; 95 15 14 12; 96 15 14 18; 97 19 14 0; 98 19 14 6; 99 19 14 12

24. 100 19 14 18; 101 0 17.5 0; 102 0 17.5 6; 103 0 17.5 12; 104 0 17.5 18

25. 105 5 17.5 0; 106 5 17.5 6; 107 5 17.5 12; 108 5 17.5 18; 109 10 17.5 0

26. 110 10 17.5 6; 111 10 17.5 12; 112 10 17.5 18; 113 15 17.5 0; 114 15 17.5 6

27. 115 15 17.5 12; 116 15 17.5 18; 117 19 17.5 0; 118 19 17.5 6; 119 19 17.5 12

28. 120 19 17.5 18; 121 0 21 0; 122 0 21 6; 123 0 21 12; 124 0 21 18; 125 5 21 0

29. 126 5 21 6; 127 5 21 12; 128 5 21 18; 129 10 21 0; 130 10 21 6; 131 10 21 12

30. 132 10 21 18; 133 15 21 0; 134 15 21 6; 135 15 21 12; 136 15 21 18

31. 137 19 21 0; 138 19 21 6; 139 19 21 12; 140 19 21 18; 141 0 24.5 0

32. 142 0 24.5 6; 143 0 24.5 12; 144 0 24.5 18; 145 5 24.5 0; 146 5 24.5 6

33. 147 5 24.5 12; 148 5 24.5 18; 149 10 24.5 0; 150 10 24.5 6; 151 10 24.5 12

34. 152 10 24.5 18; 153 15 24.5 0; 154 15 24.5 6; 155 15 24.5 12; 156 15 24.5 18
35. 157 19 24.5 0; 158 19 24.5 6; 159 19 24.5 12; 160 19 24.5 18; 161 0 28 0
36. 162 0 28 6; 163 0 28 12; 164 0 28 18; 165 5 28 0; 166 5 28 6; 167 5 28 12
37. 168 5 28 18; 169 10 28 0; 170 10 28 6; 171 10 28 12; 172 10 28 18; 173 15 28 0
38. 174 15 28 6; 175 15 28 12; 176 15 28 18; 177 19 28 0; 178 19 28 6
39. 179 19 28 12; 180 19 28 18; 181 0 -3.5 6; 182 0 -3.5 12; 183 0 -3.5 18
40. 184 5 -3.5 6; 185 5 -3.5 12; 186 5 -3.5 18; 187 10 -3.5 6; 188 10 -3.5 12
41. 189 10 -3.5 18; 190 15 -3.5 6; 191 15 -3.5 12; 192 15 -3.5 18; 193 19 -3.5
42. 194 19 -3.5 12; 195 19 -3.5 18; 196 0 -7 12; 197 0 -7 18; 198 5 -7 12
43. 199 5 -7 18; 200 10 -7 12; 201 10 -7 18; 202 15 -7 12; 203 15 -7 18
44. 204 19 -7 12; 205 19 -7 18; 206 0 -2.5 0; 207 5 -2.5 0; 208 10 -2.5 0
45. 209 15 -2.5 0; 210 19 -2.5 0; 211 0 -6 6; 212 5 -6 6; 213 10 -6 6; 214 15 -6 6
46. 215 19 -6 6; 216 0 -9.5 12; 217 0 -9.5 18; 218 5 -9.5 12; 219 5 -9.5 18
47. 220 10 -9.5 12; 221 10 -9.5 18; 222 15 -9.5 12; 223 15 -9.5 18; 224 19 -9.5 12
48. 225 19 -9.5 18
49. MEMBER INCIDENCES
50. 1 161 141; 2 121 141; 3 121 101; 4 81 101; 5 81 61; 6 61 41; 7 41 21; 8 21 1
51. 9 1 206; 10 2 181; 11 181 211; 12 182 196; 13 196 216; 14 217 197; 15 197 183
52. 16 183 4; 17 4 24; 18 44 24; 19 64 44; 20 84 64; 21 104 84; 22 124 104
53. 23 144 124; 24 164 144; 25 162 142; 26 142 122; 27 122 102; 28 82 102
54. 29 82 62; 30 62 42; 31 42 22; 32 22 2; 33 163 143; 34 143 123; 35 123 103
55. 36 103 83; 37 83 63; 38 63 43; 39 43 23; 40 23 3; 41 3 182; 42 181 182
56. 43 196 197; 44 1 2; 45 2 3; 46 3 4; 47 182 183; 48 21 22; 49 22 23; 50 24 23
57. 51 41 42; 52 42 43; 53 44 43; 54 61 62; 55 62 63; 56 64 63; 57 81 82; 58 82 83
58. 59 84 83; 60 101 102; 61 102 103; 62 104 103; 63 121 122; 64 122 123
59. 65 124 123; 66 141 142; 67 142 143; 68 144 143; 69 161 162; 70 162 163
60. 71 164 163; 72 165 145; 73 125 145; 74 125 105; 75 85 105; 76 85 65; 77 65 45
61. 78 45 25; 79 25 5; 80 5 207; 81 6 184; 82 184 212; 83 185 198; 84 198 218
62. 85 219 199; 86 199 186; 87 186 8; 88 8 28; 89 48 28; 90 68 48; 91 88 68
63. 92 108 88; 93 128 108; 94 148 128; 95 168 148; 96 166 146; 97 146 126
64. 98 126 106; 99 86 106; 100 86 66; 101 66 46; 102 46 26; 103 26 6; 104 167 147
65. 105 147 127; 106 127 107; 107 107 87; 108 87 67; 109 67 47; 110 47 27
66. 111 27 7; 112 7 185; 113 184 185; 114 198 199; 115 5 6; 116 6 7; 117 7 8
67. 118 185 186; 119 25 26; 120 26 27; 121 28 27; 122 45 46; 123 46 47; 124 48 47
68. 125 65 66; 126 66 67; 127 68 67; 128 85 86; 129 86 87; 130 88 87; 131 105 106
69. 132 106 107; 133 108 107; 134 125 126; 135 126 127; 136 128 127; 137 145 146
70. 138 146 147; 139 148 147; 140 165 166; 141 166 167; 142 168 167; 143 169 149
71. 144 129 149; 145 129 109; 146 89 109; 147 89 69; 148 69 49; 149 49 29
72. 150 29 9; 151 9 208; 152 10 187; 153 187 213; 154 188 200; 155 200 220
73. 156 221 201; 157 201 189; 158 189 12; 159 12 32; 160 52 32; 161 72 52
74. 162 92 72; 163 112 92; 164 132 112; 165 152 132; 166 172 152; 167 170 150
75. 168 150 130; 169 130 110; 170 90 110; 171 90 70; 172 70 50; 173 50 30
76. 174 30 10; 175 171 151; 176 151 131; 177 131 111; 178 111 91; 179 91 71
77. 180 71 51; 181 51 31; 182 31 11; 183 11 188; 184 187 188; 185 200 201
78. 186 9 10; 187 10 11; 188 11 12; 189 188 189; 190 29 30; 191 30 31; 192 32 31
79. 193 49 50; 194 50 51; 195 52 51; 196 69 70; 197 70 71; 198 72 71; 199 89 90
80. 200 90 91; 201 92 91; 202 109 110; 203 110 111; 204 112 111; 205 129 130
81. 206 130 131; 207 132 131; 208 149 150; 209 150 151; 210 152 151; 211 169 170

82. 212 170 171; 213 172 171; 214 173 153; 215 133 153; 216 133 113; 217 93 113
83. 218 93 73; 219 73 53; 220 53 33; 221 33 13; 222 13 209; 223 14 190
84. 224 190 214; 225 191 202; 226 202 222; 227 223 203; 228 203 192; 229 192 16
85. 230 16 36; 231 56 36; 232 76 56; 233 96 76; 234 116 96; 235 136 116
86. 236 156 136; 237 176 156; 238 174 154; 239 154 134; 240 134 114; 241 94 114
87. 242 94 74; 243 74 54; 244 54 34; 245 34 14; 246 175 155; 247 155 135
88. 248 135 115; 249 115 95; 250 95 75; 251 75 55; 252 55 35; 253 35 15
89. 254 15 191; 255 190 191; 256 202 203; 257 13 14; 258 14 15; 259 15 16
90. 260 191 192; 261 33 34; 262 34 35; 263 36 35; 264 53 54; 265 54 55; 266 56 55
91. 267 73 74; 268 74 75; 269 76 75; 270 93 94; 271 94 95; 272 96 95; 273 113 114
92. 274 114 115; 275 116 115; 276 133 134; 277 134 135; 278 136 135; 279 153 154
93. 280 154 155; 281 156 155; 282 173 174; 283 174 175; 284 176 175; 285 177 157
94. 286 137 157; 287 137 117; 288 97 117; 289 97 77; 290 77 57; 291 57 37
95. 292 37 17; 293 17 210; 294 18 193; 295 193 215; 296 194 204; 297 204 224
96. 298 225 205; 299 205 195; 300 195 20; 301 20 40; 302 60 40; 303 80 60
97. 304 100 80; 305 120 100; 306 140 120; 307 160 140; 308 180 160; 309 178 158
98. 310 158 138; 311 138 118; 312 98 118; 313 98 78; 314 78 58; 315 58 38
99. 316 38 18; 317 179 159; 318 159 139; 319 139 119; 320 119 99; 321 99 79
100. 322 79 59; 323 59 39; 324 39 19; 325 19 194; 326 193 194; 327 204 205
101. 328 17 18; 329 18 19; 330 19 20; 331 194 195; 332 37 38; 333 38 39; 334 40 39
102. 335 57 58; 336 58 59; 337 60 59; 338 77 78; 339 78 79; 340 80 79; 341 97 98
103. 342 98 99; 343 100 99; 344 117 118; 345 118 119; 346 120 119; 347 137 138
104. 348 138 139; 349 140 139; 350 157 158; 351 158 159; 352 160 159; 353 177 178
105. 354 178 179; 355 180 179; 356 1 5; 357 5 9; 358 9 13; 359 17 13; 360 2 6
106. 361 6 10; 362 10 14; 363 14 18; 364 3 7; 365 11 7; 366 11 15; 367 15 19
107. 368 4 8; 369 8 12; 370 12 16; 371 16 20; 372 21 25; 373 25 29; 374 29 33
108. 375 37 33; 376 22 26; 377 26 30; 378 30 34; 379 34 38; 380 23 27; 381 31 27
109. 382 31 35; 383 35 39; 384 24 28; 385 28 32; 386 32 36; 387 36 40; 388 41 45
110. 389 45 49; 390 49 53; 391 57 53; 392 42 46; 393 46 50; 394 50 54; 395 54 58
111. 396 43 47; 397 51 47; 398 51 55; 399 55 59; 400 44 48; 401 48 52; 402 52 56
112. 403 56 60; 404 61 65; 405 65 69; 406 69 73; 407 77 73; 408 62 66; 409 66 70
113. 410 70 74; 411 74 78; 412 63 67; 413 71 67; 414 71 75; 415 75 79; 416 64 68
114. 417 68 72; 418 72 76; 419 76 80; 420 81 85; 421 85 89; 422 89 93; 423 97 93
115. 424 82 86; 425 86 90; 426 90 94; 427 94 98; 428 83 87; 429 91 87; 430 91 95
116. 431 95 99; 432 84 88; 433 88 92; 434 92 96; 435 96 100; 436 101 105
117. 437 105 109; 438 109 113; 439 117 113; 440 102 106; 441 106 110; 442 110 114
118. 443 114 118; 444 103 107; 445 111 107; 446 111 115; 447 115 119; 448 104 108
119. 449 108 112; 450 112 116; 451 116 120; 452 121 125; 453 125 129; 454 129 133
120. 455 137 133; 456 122 126; 457 126 130; 458 130 134; 459 134 138; 460 123 127
121. 461 131 127; 462 131 135; 463 135 139; 464 124 128; 465 128 132; 466 132 136
122. 467 136 140; 468 141 145; 469 145 149; 470 149 153; 471 157 153; 472 142 146
123. 473 146 150; 474 150 154; 475 154 158; 476 143 147; 477 151 147; 478 151 155
124. 479 155 159; 480 144 148; 481 148 152; 482 152 156; 483 156 160; 484 161 165
125. 485 165 169; 486 169 173; 487 177 173; 488 162 166; 489 166 170; 490 170 174
126. 491 174 178; 492 163 167; 493 171 167; 494 171 175; 495 175 179; 496 164 168
127. 497 168 172; 498 172 176; 499 176 180; 500 197 199; 501 199 201; 502 201 203
128. 503 203 205; 504 196 198; 505 198 200; 506 200 202; 507 202 204; 508 181 184
129. 509 184 187; 510 187 190; 511 190 193; 512 182 185; 513 188 185; 514 188 191

130. 515 191 194; 624 183 186; 625 186 189; 626 189 192; 627 192 195
131. ELEMENT INCIDENCES SHELL
132. 516 161 165 166 162; 517 165 169 170 166; 518 169 173 174 170
133. 519 173 177 178 174; 520 141 145 146 142; 521 145 149 150 146
134. 522 149 153 154 150; 523 153 157 158 154; 524 121 125 126 122
135. 525 125 129 130 126; 526 129 133 134 130; 527 133 137 138 134
136. 528 101 105 106 102; 529 105 109 110 106; 530 109 113 114 110
137. 531 113 117 118 114; 532 81 85 86 82; 533 85 89 90 86; 534 89 93 94 90
138. 535 93 97 98 94; 536 61 65 66 62; 537 65 69 70 66; 538 69 73 74 70
139. 539 73 77 78 74; 540 41 45 46 42; 541 45 49 50 46; 542 49 53 54 50
140. 543 53 57 58 54; 544 21 25 26 22; 545 25 29 30 26; 546 29 33 34 30
141. 547 33 37 38 34; 548 2 6 7 3; 549 6 10 11 7; 550 10 14 15 11; 551 14 18 19 15
142. 552 22 26 27 23; 553 26 30 31 27; 554 30 34 35 31; 555 34 38 39 35
143. 556 42 46 47 43; 557 46 50 51 47; 558 50 54 55 51; 559 54 58 59 55
144. 560 62 66 67 63; 561 66 70 71 67; 562 70 74 75 71; 563 74 78 79 75
145. 564 82 86 87 83; 565 86 90 91 87; 566 90 94 95 91; 567 94 98 99 95
146. 568 102 106 107 103; 569 106 110 111 107; 570 110 114 115 111
147. 571 114 118 119 115; 572 122 126 127 123; 573 126 130 131 127
148. 574 130 134 135 131; 575 134 138 139 135; 576 142 146 147 143
149. 577 146 150 151 147; 578 150 154 155 151; 579 154 158 159 155
150. 580 162 166 167 163; 581 166 170 171 167; 582 170 174 175 171
151. 583 174 178 179 175; 584 163 167 168 164; 585 167 171 172 168
152. 586 171 175 176 172; 587 175 179 180 176; 588 143 147 148 144
153. 589 147 151 152 148; 590 151 155 156 152; 591 155 159 160 156
154. 592 123 127 128 124; 593 127 131 132 128; 594 131 135 136 132
155. 595 135 139 140 136; 596 103 107 108 104; 597 107 111 112 108
156. 598 111 115 116 112; 599 115 119 120 116; 600 83 87 88 84; 601 87 91 92 88
157. 602 91 95 96 92; 603 95 99 100 96; 604 63 67 68 64; 605 67 71 72 68
158. 606 71 75 76 72; 607 75 79 80 76; 608 43 47 48 44; 609 47 51 52 48
159. 610 51 55 56 52; 611 55 59 60 56; 612 23 27 28 24; 613 27 31 32 28
160. 614 31 35 36 32; 615 35 39 40 36; 616 3 7 8 4; 617 7 11 12 8; 618 11 15 16 12
161. 619 15 19 20 16; 620 182 185 186 183; 621 185 188 189 186; 622 188 191 192 189
162. 623 191 194 195 192
163. ELEMENT PROPERTY
164. 516 TO 623 THICKNESS 0.15
165. DEFINE MATERIAL START
166. ISOTROPIC CONCRETE
167. E 2.17185E+007
168. POISSON 0.17
169. DENSITY 23.5616
170. ALPHA 1E-005
171. DAMP 0.05
172. TYPE CONCRETE
173. STRENGTH FCU 27579
174. END DEFINE MATERIAL
175. MEMBER PROPERTY AMERICAN
176. 1 TO 41 72 TO 112 143 TO 183 214 TO 254 285 TO 325 PRIS YD 0.5 ZD 0.4
177. 42 TO 71 113 TO 142 184 TO 213 255 TO 284 326 TO 515 624 TO 626 -

178. 627 PRIS YD 0.75 ZD 0.5  
179. CONSTANTS  
180. MATERIAL CONCRETE ALL  
181. SUPPORTS  
182. 206 TO 225 FIXED  
183. DEFINE WIND LOAD  
\*\*\* NOTE: If any floor diaphragm is present in the model Wind Load definition should be defined after Floor Diaphragm definition. Otherwise wind load generation may be unsuccessful during analysis.  
184. TYPE 1 WIND LOAD  
185. INT 2.01 2.14 2.231 2.341 2.474 2.65 2.739 HEIG 10 15 20 30 50 100 150  
186. EXP 1 JOINT 1 TO 225  
187. LOAD 1 LOADTYPE DEAD TITLE DL  
188. SELFWEIGHT Y -1 LIST 1 TO 515 624 TO 627  
189. MEMBER LOAD  
190. 42 TO 68 113 TO 139 184 TO 210 255 TO 281 326 TO 352 356 TO 483 500 TO 515 -  
191. 624 TO 627 UNI GY -15.21  
192. FLOOR LOAD  
193. YRANGE 3.5 28 FLOAD 5.5 XRANGE 0 19 ZRANGE 0 6 GY  
\*\*NOTE\*\* about Floor/OneWay Loads/Weights.  
Please note that depending on the shape of the floor you may have to break up the FLOOR/ONEWAY LOAD into multiple commands. For details please refer to Technical Reference Manual  
Section 5.32.4.2 Note d and/or "5.32.4.3 Note f.  
194. YRANGE 0 28 FLOAD 5.5 XRANGE 0 19 ZRANGE 6 12 GY  
195. YRANGE -3.5 28 FLOAD 5.5 XRANGE 0 19 ZRANGE 12 18 GY  
196. LOAD 2 LOADTYPE LIVE TITLE LL  
197. FLOOR LOAD  
198. YRANGE 3.5 24.5 FLOAD 3 XRANGE 0 19 ZRANGE 0 6 GY  
199. YRANGE 0 24.5 FLOAD 3 XRANGE 0 19 ZRANGE 6 12 GY  
200. YRANGE -3.5 24.5 FLOAD 3 XRANGE 0 19 ZRANGE 12 18 GY  
201. LOAD 3 LOADTYPE WIND TITLE WL X+  
202. WIND LOAD X 1 TYPE 1 XR 0 19 YR 0 28 ZR 0 6  
203. WIND LOAD X 1 TYPE 1 XR 0 19 YR -3.5 28 ZR 6 12  
204. WIND LOAD X 1 TYPE 1 XR 0 19 YR -7 28 ZR 12 18  
205. LOAD 4 LOADTYPE WIND TITLE WL X -  
206. WIND LOAD X -1 TYPE 1 YR 0 28 ZR 0 6  
207. WIND LOAD X -1 TYPE 1 YR 0 28 ZR 6 12  
208. WIND LOAD X -1 TYPE 1 YR -7 28 ZR 12 18  
209. LOAD 6 LOADTYPE WIND TITLE WL Z -  
210. WIND LOAD Z -1 TYPE 1 XR 0 19 YR -7 28  
211. LOAD 7 GENERATED INDIAN CODE GENRAL\_STRUCTURES 1  
212. REPEAT LOAD  
213. 1 1.5 2 1.5  
214. LOAD 8 GENERATED INDIAN CODE GENRAL\_STRUCTURES 2  
215. REPEAT LOAD  
216. 1 1.2 2 1.2 3 1.2  
217. LOAD 9 GENERATED INDIAN CODE GENRAL\_STRUCTURES 3

218. REPEAT LOAD

219. 1 1.2 2 1.2 4 1.2

## PROBLEM STATISTICS

NUMBER OF JOINTS 225 NUMBER OF MEMBERS 519

NUMBER OF PLATES 108 NUMBER OF SOLIDS 0

NUMBER OF SURFACES 0 NUMBER OF SUPPORTS 20

SOLVER USED IS THE OUT-OF-CORE BASIC SOLVER ORIGINAL/FINAL BAND-  
WIDTH= 205/ 27/ 168 DOF

TOTAL PRIMARY LOAD CASES = 25, TOTAL DEGREES OF FREEDOM = 1230

TOTAL LOAD COMBINATION CASES = 0 SO FAR.

SIZE OF STIFFNESS MATRIX = 207 DOUBLE KILO-WORDS REQD/AVAIL. DISK  
SPACE = 16.4/ 165754.7 MB

MAXIMUM DISPLACEMENTS ( CM /RADIANS) (LOADING 9) MAXIMUMS AT  
NODE

X = -2.68762E+00 180

Y = -5.26466E-01 164

Z = 5.69772E-01 180

RX= 7.20523E-04 17

RY= -3.87175E-04 1

RZ= 6.34454E-04 43

STATIC LOAD/REACTION/EQUILIBRIUM SUMMARY FOR CASE NO. 10

GENERATED INDIAN CODE GENRAL\_STRUCTURES 4

CENTER OF FORCE BASED ON Y FORCES ONLY (METE).

(FORCES IN NON-GLOBAL DIRECTIONS WILL INVALIDATE RESULTS)

X = 0.994179849E+01

Y = 0.694526676E+01

Z = 0.952222938E+01

\*\* NOTE: MOMENT BALANCE DOES NOT CONSIDER SECONDARY EFFECTS OF  
P-Delta or Direct Analysis \*\*

STATIC LOAD/REACTION/EQUILIBRIUM SUMMARY FOR CASE NO. 11

GENERATED INDIAN CODE GENRAL\_STRUCTURES 5

CENTER OF FORCE BASED ON Y FORCES ONLY (METE).

(FORCES IN NON-GLOBAL DIRECTIONS WILL INVALIDATE RESULTS)

X = 0.994179849E+01

Y = 0.694526676E+01

Z = 0.952222938E+01

CENTER OF FORCE BASED ON Z FORCES ONLY (METE).

STATIC LOAD/REACTION/EQUILIBRIUM SUMMARY FOR CASE NO. 12

GENERATED INDIAN CODE GENRAL\_STRUCTURES 6

CENTER OF FORCE BASED ON X FORCES ONLY (METE).

(FORCES IN NON-GLOBAL DIRECTIONS WILL INVALIDATE RESULTS)

X = 0.000000000E+00

Y = 0.126780483E+02

Z = 0.941554729E+01

CENTER OF FORCE BASED ON Y FORCES ONLY (METE).

(FORCES IN NON-GLOBAL DIRECTIONS WILL INVALIDATE RESULTS)

X = 0.994179849E+01

Y = 0.694526676E+01

Z = 0.952222938E+01