

CAMPYLOBACTER

Author

Margaret Ordonez Smith

Microbiology Institute of Colombia Imicol
Calle 73 #10-10 Apt 301 Bogota Colombia.
institutodemicrobiologia@yahoo.com

I. TAXONOMY

Campylobacter is in the family of *Campylobacteraceae*. In 1963 E. J M. Sebald and M. Veron discovered it and was classified as a *Vibrio*. There are 24 species that affect humans and animals (73,75,103,117)

II. MORPHOLOGY

It is a bacteria Gram negative, curved, S shaped or spiral that can measure 0.2 to 0.9 μm wide and 0.5 to 5 μm long. It is a non-spore bacterium and in old cultures can have a coccus morphology. Found all over the world. (16, 67,70).

III. IDENTIFICATION

It can be a catalase positive, oxidase positive, motile, sensitive to nalidixic acid, usually they grow in microaerophilic atmosphere, but it can also grow on aerobic or anaerobic (122). A Gram stain can show in 100X the morphology of a *Campylobacter* bacteria (direct examination) (51). Figure No. 1.

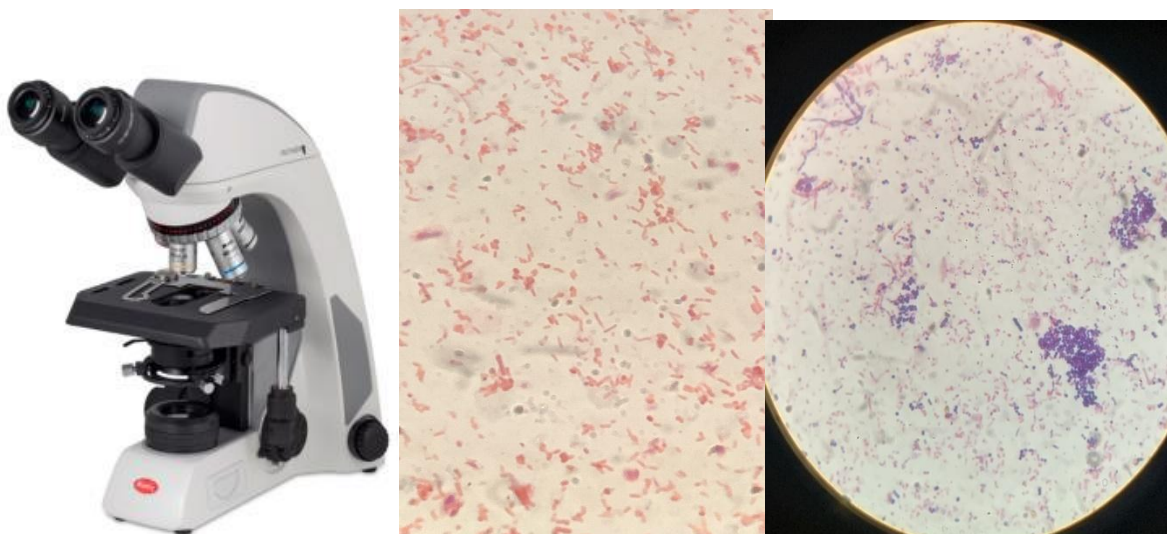


Figure 1: Microscope to See a Gram Stain of Feces

IV. CULTURES

Samples should be smeared onto the media before 1 or the most 2 hours after collection of the stool for a *Campylobacter's* isolation (6,93,94). Emulsifying feces in sterile saline solution has been recommended. It is necessary to use chocolate agar, an enrichment broth, or a *Campylobacter* selective media and must be incubated in a jar with microaerophilic (5% oxygen, 10% CO₂, and 85% nitrogen) atmosphere or gas generating kit for 24 to 48 hours at a temperature of 37°C. In case there is none of these items, the Petri dishes can be put in with a lit candle inside a box, this, may be enough to reduce the oxygen. Feces or the samples used to isolate the bacterium must be inoculated directly on to the selective media so that single isolated colonies are formed (48). A Gram stain of these colonies should be made in order, to confirmed the *Campylobacter's* morphology. (Figure No. 2). There are many selective media: Skirrow (124), Butzler (17), Butzler and Dekeyser (19) Blaser-Wang (14), Karmali or Brilliance Campy count (55) and the chromoagar (27,67).

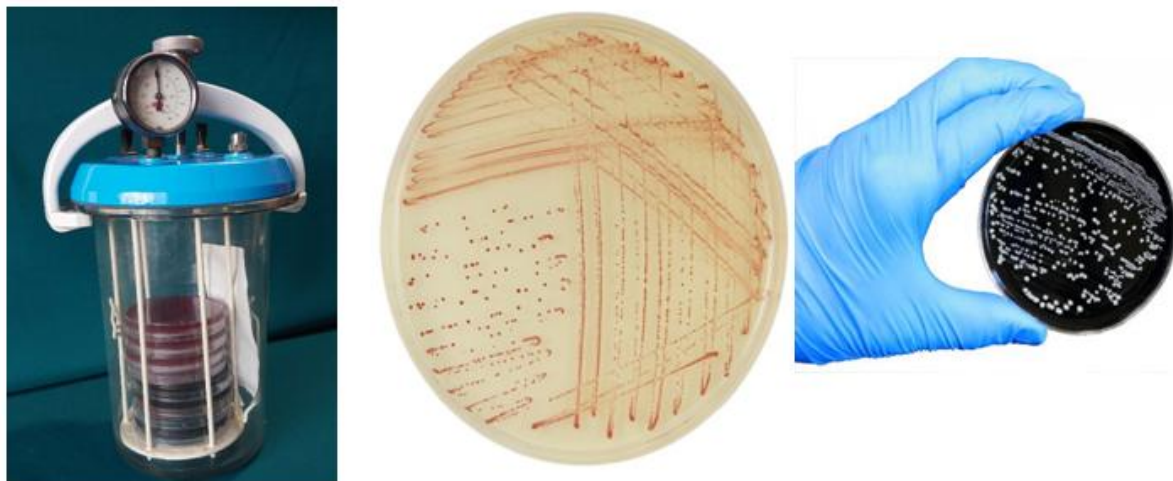


Figure 2: A jar with a gas generating kit for microaerophilic atmosphere and the cultures with *Campylobacter* colonies in selective media chromoagar and Karmali (27,55,67)

V. OTHER METHODS

There are some expensive technics to identify *Campylobacter* but not all the laboratories can afford to do them: PCR (Polymerase Chain Reaction) Cohen 2023 (29), Heydari 2024 (50) Schiaffino 2024 (116) with Novel rpsK/rpsD primer-probe assay; it was found a 58.7%, Maldi Tof (Matrix-Assisted Laser Desorption/Ionization) and stool antigen tests: ProSpecT, Premier Campy, Xpect Campy, and Immuno Card Start! Campy (31,53,67). In 2023 Rousou et al described the Seeplex/Allplex, Amplidiag/Novodiag, BDMax and multiplex nucleic acid tests showed excellent accuracy to diagnose a *Campylobacter* infection.

VI. SAMPLES

Fecal or feces samples or rectal swabs are acceptable for its isolation, skin (85), oral (99,126), saliva (4,72) periodontal (83,99,101), subgingival (64,107), synovial liquid (123) and blood samples can be tested (15, 54). A blood test is rarely done to diagnose *Campylobacter* diarrheal illness (129). In Germany Dammermann, studied in blood samples with an ELISA

test. Since, this bacterium has been in foodborne outbreaks, it can be isolated from: water (3,35,80,100,131) chicken (30,63,34,68,79,106), milk (1,45,80,96,111), meat (5) vegetables (100), animal farms (130,132) and pets (81).

The preanalytical phase is very important in any procedure, in order, to have an accurate result. Every patient should have instructions how to take the sample and how to transport it to the laboratory. Time and temperature are very important: the ideal is to take it to the laboratory maximum after an hour of recollection. The sample must be kept at corporal temperature in a “kangaroo” style, never put it in the freeze (93,94).

VII. CLINICAL SIGNIFICANCE

Since 1970 *Campylobacter jejuni* has been the most common causative agents of bacterial gastroenteritis in the world and an emerging zoonotic disease (9,34,40,41,43,131). Other symptoms are: fever, abdominal cramping, diarrhea (with or without blood and leucocytes) that lasts for several days to more than a week (2). Also, it can mimic acute appendicitis and extraintestinal do occur, such as bacteremia (95,129), reactive arthritis (ReA) (33, 46, 123), bursitis, urinary tract infection (39), meningitis, endocarditis, peritonitis, erythema nodosum, pancreatitis, abortion, neonatal sepsis (17), psoriasis and psoriatic arthritis (85). Deaths can occur rarely. Guillen-Barré syndrome (GBS) is one of the sequelae of infection, affects the peripheral nervous system, causing muscle weakness, temporary paralysis, and in severe cases, respiratory and cardiovascular effects (128). It can produce the Miller-Fisher syndrome: A variant of Guillain-Barré syndrome, characterized by the classic triad of symptoms: ataxia, ophthalmoplegia and areflexia (69,103,134). Also, it has been associated with cross-reactivity with autoimmune diseases: It has been observed that *Campylobacter jejuni* infections can trigger an autoimmune response in which the immune system attacks the body's cells by mistake, which can lead to various autoimmune diseases, such as acute polyradiculoneuritis (82,76,127). In Sweden 2020 Melenotte (78) published an associated with non-Hodgkin's lymphoma (NHL), the most common haematologic malignance, in Japan with moyamoya disease (126). In Italy Pietropaoli (99) found an association between systemic exposure to periodontal microbiota and high blood pressure. In Canada patients untreated, periodontitis leads to destruction of the teeth-supporting tissues, bone resorption and ultimately loss of teeth (64).

VIII. TRANSMISSION

Campylobacteriosis is a zoonotic disease usually presents an acute gastroenteritis disease (43,49). The majority is infected by contaminated water (100) or food (12,47) as milk, chicken (68,70,79,106,122,131), meat (11), vegetables (75,100); less frequently with an infected animal or person (23,24). In United States waterborne and foodborne illnesses are caused by *Campylobacter* in 9% (60, 80). White (132) showed that people working with animal exposure a 13% had infections of *Campylobacter*, *Cryptosporidium*, Shiga toxin-producing *E coli*, and non-typhoidal *Salmonella*; and 14% in an industry with regular animal exposure. In United States Smith suspects that wild birds are sources for human infection, there is a prevalence of 27% with *Campylobacter spp*. The European Food Safety Authority (EFSA) estimates that birds as reservoirs of *Campylobacter* are responsible for 50 to 80% of cases, while handling and preparation may be responsible for 20 to 30% of cases (125). In United States MacCarthy (77) and in Denmark Kuhn 2021 (61) showed enteric infections in men who have sex with men had transmission of *Campylobacter*, *Giardia lamblia*, *Shigella*.

In Japan Kumagai (63) with chicken products 80.3%. In South Africa Chibwe 2023 (25) studied the Bloukrans and Swartkops rivers and found *Campylobacter*. In many communities in the world, rivers play an important role in the social and cultural lives of people, and so it is important to monitor the quality of river water. Grace (45) and Ordonez Smith (87,88,89,91,92) had an incidence of 4%; Khan (55) and Abd El Ghany (1) had a 13%; and Fonseca (38) 63.8% in milk. Figure 3 and 4. In Colombia with fresh chickens in the Pontificia Universidad Javeriana of Bogotá had 54.8% (42 of 91 samples). The samples were detected by PCR and cultures (29,48).

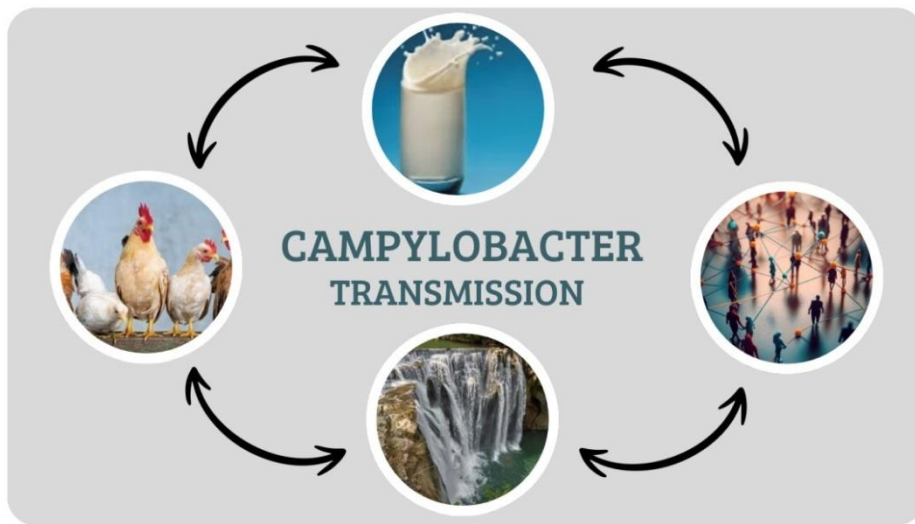


Figure 3: *Campylobacter: Transmission with chicken, water, persons or milk*

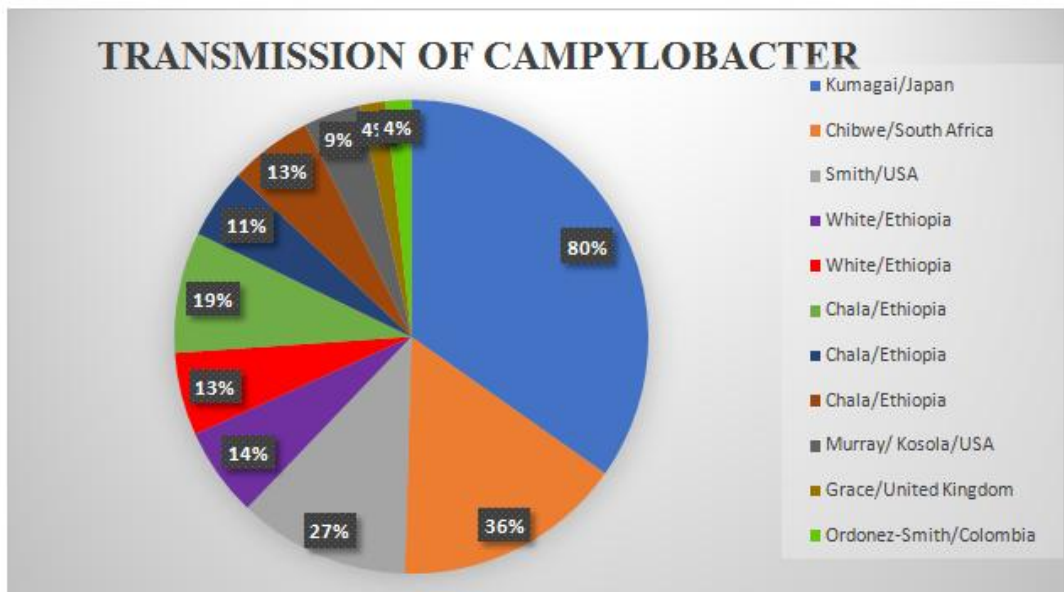


Figure 4: *Authors and countries/percentages of the transmission with Campylobacteriosis in humans*

IX. *CAMPYLOBACTER* INCIDENCE

In England and Wales between 1990 and 1999 was examined the *Campylobacter* incidence in conjunction with weather conditions. Over the 10-year interval, the average annual rate was determined to be 78.4 ± 15.0 cases per 100,000, ranging from 29.633 to 52.840 reported cases per year with an average of 40.127 cases per year, with an upward trend (66,69,70). Multiple regression analysis showed that daily average temperature, precipitation, and sunshine were significantly associated with *Campylobacter* rates. In the United States, England and Wales (1999) an estimated of 2.1-2.4 million cases of human Campylobacteriosis cases were reported, according to the National Infectious Disease Registry (National Public Health Institute) and a reduction after COVID-19 pandemic from April 19-33% to 1-7% in August (86). In 2013 *Campylobacter* has been reported in Europe with 214,779 positive cases, that means 64.8 for every 100,000 persons and in Denmark Shioda (121) the costs per year 124 million of euros. The most common origin of contamination is with chicken or undercooked poultry, untreated water, animal contact, environmental factors, and contaminated milk. (31,53). Pires (100) in Denmark showed a 60% of gastrointestinal infections. Mozambique 52.2% (121), 14% in Colombia, gastroenteritis cases in 1984 (87,88,89,90,91,92). Chala (24) in Ethiopia reported of 519 samples a total of prevalence in *Campylobacter*: 42.4%, humans (10.1%), cattle 18.5% (77) and in Saudi Arabia a 3% (6), Australia 10% (26). In India Ghosh (42) had an incidence of 8.4% and Khan (56) a 13%. Results showed that *Campylobacter* leads the ranking of foodborne pathogens in almost all indicators explored. In 2019, *Campylobacter* caused nearly 59,000 cases, 41 premature deaths, 60% gastrointestinal infections (120).

In Colombia *Campylobacter* in children under 5 years of age, represents one of the most important etiologic agents of acute diarrheal, ranking the first place in morbidity and mortality. In Tunja a 2.3% (73), and the National Institute of Health between 2007 and 2011 there was an incidence of 3.3% and 6.8% (21). Postinfectious irritable bowel syndrome (PI-IBS) is an important sequela of *Campylobacter* infection (114); in Colombia, last year Ordonez-Smith (94) had an incidence of 64.4% (136 of 211 cases of irritable bowel syndrome). Parfenov (97) in Russia colitis.

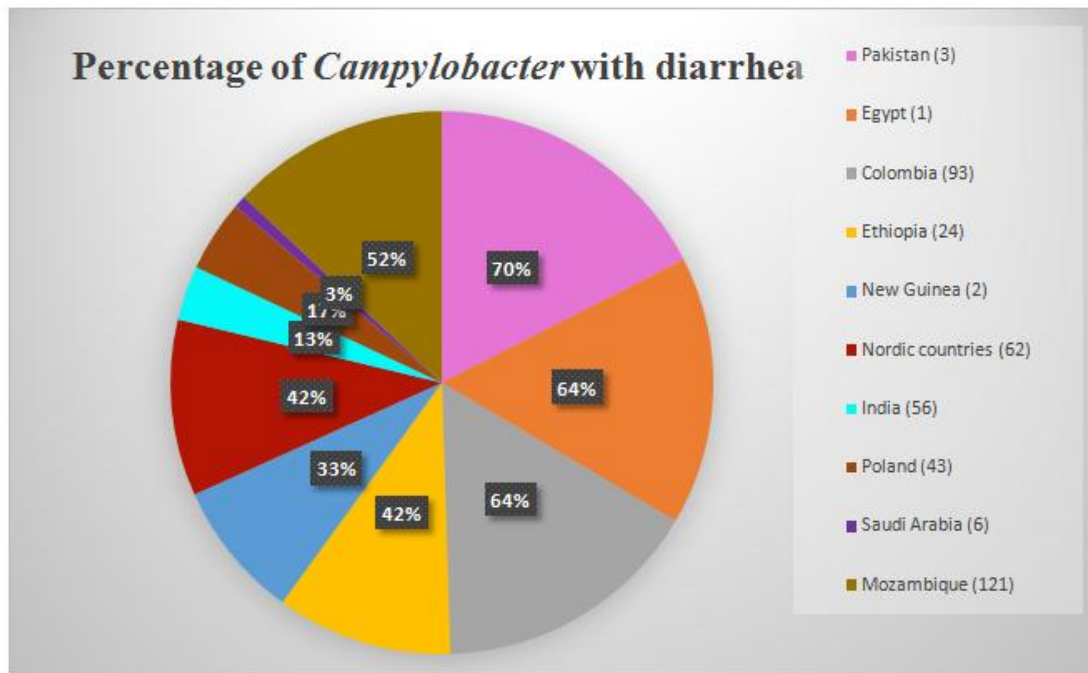


Figure 5: Percentages all over the world with Campylobacteriosis

DIARRHEA INCIDENCE WITH CAMPYLOBACTER

Country	Percentages
Pakistan (3)	70%
Egypt (1)	64%
Colombia (93)	64%
Ethiopia (24)	42%
New Guinea (2)	33%
Nordic countries (62)	42%
India (56)	13%
Poland (43)	17%
Saudi Arabia (6)	3%
Mozambique (121)	52%

Guillain-Barré syndrome (GBS) is the most common cause of acute flaccid paralysis in polio-free regions, with incidence estimated at between 0.4 and 4 per 100,000 in different settings. The disease has an autoimmune pathology; following infection, antibodies produced against pathogen surface structures cross-react with nerve ending antigens, leading to neurologic damage (69,76,127) and in United States of America (USA) Scallan (113) found a 41% of *Campylobacter*-associated cases (82). Yamana (134) in Japan Guillain-Barré, in Sweden MacCarthy (77) one of every four cases had GBS. Pua Torrejón (103) in Spain published a case of Miller-Fisher Syndrome associated with *Campylobacter*. Pogreba-Brown (102) in USA and Germany Sharafutdinov (119) describes the incidence in sequelae in IBS (irritable bowel syndrome), IBD (inflammatory bowel disease), constipation, chronic diarrhea, Crohn's disease, gastroesophageal reflux disease, ulcerative colitis, dyspepsia, reactive arthritis,

Reiter's syndrome, joint pain (28). Norstrom (84) in Sweden found an incidence of 16% with joint symptoms following a *Campylobacter* infection, Reactive arthritis (ReA) has an annual incidence of 4.3 per 100,000, it is a non-purulent joint inflammation which can be triggered by infections in the gut or in the urogenital tract. Kirishima (57) et al in Japan 2022 described that *Campylobacter*, *Citrobacter* and *Leptotrichia* in the cholangiocarcinoma has an abundance increase between clinical stage with and without lymph node metastasis. Takayanagi (126) describes in Japan a higher incidence in the oral microbiome with moyamoya disease.

X. PUBLIC HEALTH IMPLICATIONS

Public health interventions aimed at controlling *Campylobacter* incidence have focused primarily on reducing food-borne infections, in particular those caused by contaminated poultry, cattle, birds (36). *Campylobacter* seasonality is clearly marked in chicken, as studies have shown in USA, Scandinavia, Netherlands and Wales (25,122). It is difficult to establish a direct correlation between human and chicken *Campylobacter* isolates. White (132) in USA published that pathogens with most foodborne illnesses 9% was of *Campylobacter* and Scallan (112) in USA with children a 63% of diarrhea cases. In Rwanda, Africa (111) a 41% of diarrhea with contaminated milk and other dairy products and in USA Palomares also in milk farms (96).

Peh (98) et al 2023 are studying an administering bacteriophages (phages), in order to, evaluate as a possible intervention strategy in primary poultry production to reduce the public health risk of human infection. Also, Kocot et al. (59) have used bacteriophages, which are ubiquitous bacterial viruses, and bacteriophage endolysins to eliminate Gram-negative pathogens, Kittler (58) in Germany they are working to use phages in chicken's intestine, and Chowdhury (26), has worked with bacteriophages, nanoparticles, probiotics in the poultry processing industry to prevent foodborne pathogens from reaching the consumer.

XI. SUSCEPTIBILITY OF ANTIBIOTICS

Schiaffino in Peru (115) in 2019 published 77.4% resistance to ciprofloxacin, 33.1% to azithromycin, susceptibility to amoxicillin and clavulanic acid (AMC) was 94%. It can be used erythromycin (E), tetracycline (TE), gentamicin (CN), ampicillin (PN), ceftriaxone (CRO), trimethoprim-sulfamethoxazole (SXT), nalidixic acid (NA), and chloramphenicol (C), (21,131), with azithromycin (AZM) (29,32). The isolated *Campylobacter* species were found to be resistant to cephalothin (CEF) (100%), ampicillin (PN) (60.5%), cefotaxime (CTX) (60.5%), chloramphenicol (47.4%) and tetracycline (TE) (42.1%). On the other hand, the isolates were susceptible to nalidixic acid (86.8%), ciprofloxacin (CIP) (86.8%), sulphamethazole (84.2%), ceftriaxone (78.9%), clindamycin (68.4%) and cefixime (FEP) (65.8%), 84.2% of the isolates showed multi-drug resistance for three-to-six drug classes. Fonseca (38) in Canada from dairy herds: resistance to tetracycline was observed in 49.7% of the *Campylobacter* spp. isolates, followed by ciprofloxacin (19.9%) and nalidixic acid (NA) (19.3%). The proportion of multi-drug resistant (≥ 3 antimicrobial classes) *Campylobacter* spp. isolates was low (0.3%); however, 15.6% were resistant to two different classes of antimicrobials. In Kenia in diarrhoeic children Zachariah (136) *Campylobacter*'s resistance to erythromycin (87.5%), doxycycline (DOX) (75.0%), ampicillin (73.7%), cotrimoxazole (73.3%) and minocycline (68.8%). In Costa Rica Lazo-Láscarez (68) chicken isolated isolates showed resistance to nalidixic acid (91.2%), ciprofloxacin (85.8%), enrofloxacin (ENR)

(85.8%), doxycycline (25.0%), chloramphenicol (5.4%) and erythromycin (2.7%). In Greece 2024 Maraki 77.3% (74) was resistance to ciprofloxacin. Wiczorek (131) in Poland resistant to ciprofloxacin 49% and 89%, between 1994-1996 and 2005-2008, respectively. Musick (81) resistance to ciprofloxacin (CIP), azithromycin, carbapenem, tetracycline and sensible imipenem/cilastatin and oral fosfomycin. In Colombia (94) had a sensitivity to AMC 63%, fosfomycin (FOS) 60%, cefuroxime (CXM) 50%, levofloxacin (LEV) 43% and ZM 20%. Figures 6,7.

Ribeiro (105) in Brazil published a screening of 28 vegetable oils with anti-Campylobacter activity using olibanum, salvia and candeia essential oils. Its treatment should be done with samples cultures, in order to do the sensitivity and it must be guided by a physician (37,94).

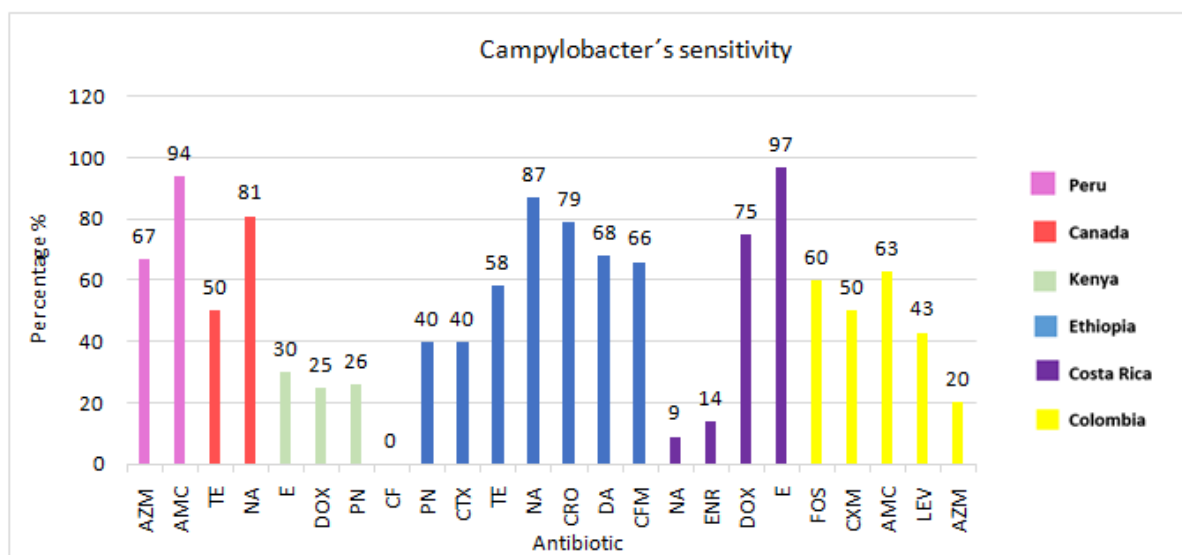


Figure 6: Susceptibility antibiotics in Campylobacteriosis in different countries

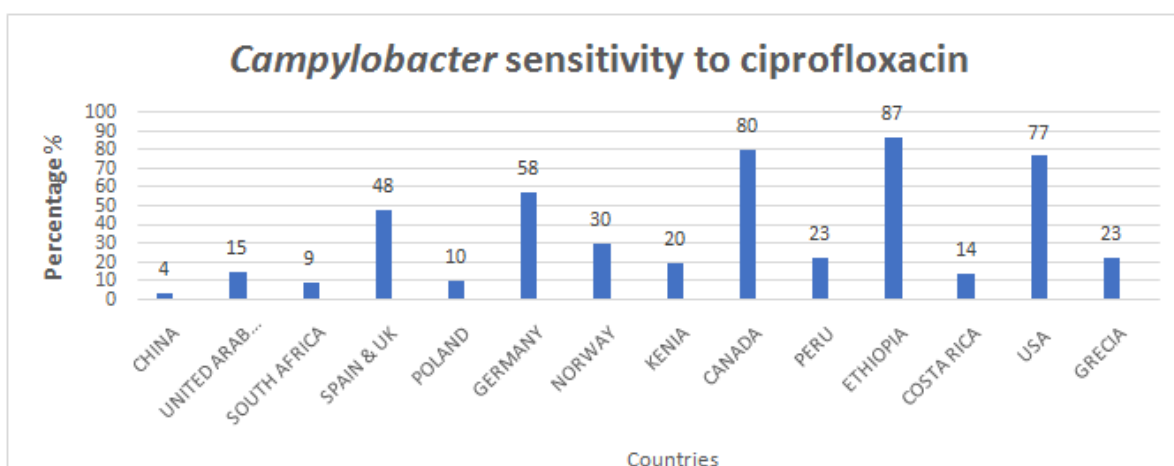


Figure 7: Campylobacter sensitivity to ciprofloxacin in different countries

XII. VACCINES

Since viral (rotavirus, human calicivirus) and bacterial infections (*Campylobacter*, *Salmonella*, *Shigella*, *Vibrio cholera*, *Escherichia coli* (ETEC)) continue to be a leading cause of mortality and morbidity in young children in low income and middle income countries, in the elderly and immunocompromised individuals (8, 9). Grabowski (44), Islam (52), Kocot (59) used phage system in poultry. Seo (118) et al 2020 introduced a novel epitope- and structure-based vaccinology platform known as MEFA (multi-epitope fusion antigen) and the application of MEFA for developing broadly protective multivalent vaccines against heterogenous pathogens.

XIII. CONCLUSION

Campylobacter is a bacterium that has to be monitored because it causes many pathologies and it is an etiology that involves many expenses in public health (10,30,70,120,128). It is also involved in carcinogenesis (135), Guillan-Barré (76,82,127,128,131,134), Re reactive arthritis (69,75,131), people working with animal exposure or industry (132), bacteremia (129). Campylobacteriosis represent the most common risk factor for developing IBD (irritable bowel disease) (119). Kuhn (62) et al 2020 showed in the Nordic countries that the incidences of *Campylobacter* are linked to increase in temperature and especially precipitation in the week before illness, suggesting a non-food transmission route (70).

ACKNOWLEDGEMENTS

This work was supported by the Microbiology Institute of Colombia IMICOL, National Academy of Medicine and with help to do the figures of Valentina Medina Cervantes and Juan Martin Páez Danies. And the information of the references of Jenny Milena Macheta Rico. I appreciate all their help.

REFERENCES

- [1] Abd El-Ghany, W. (2019). One health approach of campylobacteriosis in Egypt: An emerging zoonotic disease. *J Infect Dev Ctries*. 30;13(11):956-960. doi: 10.3855/jidc.11860.
- [2] Abdad, M. Y., Soli, K. W., Pham, B., Bande, G., Maure, T., Jonduo, M., Kisa, D., Rai, G., Phuanukoonnon, S., Siba, P. M., Horwood, P. F., & Greenhill, A. R. (2020). Diarrhoeal disease surveillance in Papua New Guinea: findings and challenges. *Western Pacific Surveillance and Response Journal*, 11(1), 7-12.
- [3] Ahmed, J., Wong, L. P., Chua, Y. P., Channa, N., Mahar, R. B., Yasmin, A., VanDerslice, J. A., & Garn, J. V. (2020). Quantitative Microbial Risk Assessment of Drinking Water Quality to Predict the Risk of Waterborne Diseases in Primary-School Children. *International Journal of Environmental Research and Public Health*, 17(8), 2774. <https://doi.org/10.3390/ijerph17082774>
- [4] Ali Mohammed, M. M., Al Kawas, S., & Al-Qadhi, G. (2021). Tongue-coating microbiome as a cancer predictor: A scoping review. *Archives of Oral Biology*, 132, 105271. <https://doi.org/10.1016/j.archoralbio.2021.105271>
- [5] Ali, S. and Alsayeqh, AF (2022). Review of the main meat-borne zoonotic bacterial pathogens. *Frontiers in public health*. 10, 1045599. doi: 10.3389/fpubh.2022.1045599
- [6] Alzaher, M. Z., Almugahwi, A. A., Almulla, A. A., Almeer, H. H., Alshammasi, M. M., & El-Badry, A. A. (2022). Diagnostic yield of stool culture and probable predictive factors. *Acta Biomedica*, 93(6), e2022302. doi: 10.23750/abm.v93i6.13428
- [7] Arabia Sonnevend Á., Rotimi V. O., Kolodziejek J., Usmani A., Nowotny N., Pál T. (2006). High level of ciprofloxacin resistance and its molecular background among *Campylobacter jejuni* strains isolated in

- the United Arab Emirates, *Journal of Medical Microbiology*. 55, no. 11, 1533–1538, 2-s2.0-33750822271, <https://doi.org/10.1099/jmm.0.46744-0>
- [8] Banerjee, S., Barry, E. M., Baqar, S., Bourgeois, A. L., Campo, J. J., Choy, R. K. M., Chakraborty, S., Clifford, A., Deal, C., Estrada, M., Fleckenstein, J., Hasso-Agopsowicz, M., Hausdorff, W., Khalil, I., Maier, N., Mubanga, C., Platts-Mills, J. A., Porter, C., Qadri, F., Simuyandi, M., Walker, R., & White, J. A. (2024). The 2022 Vaccines Against Shigella and Enterotoxigenic Escherichia coli (VASE) Conference: Summary of abstract-based presentations. *Vaccine*, 42(7), 1454-1460. doi: 10.1016/j.vaccine.2023.11.031.
- [9] Baqar, S., Bonavia, A., Louis Bourgeois, A., Campo, J. J., Clifford, A., Hanevik, K., Walker, R. (2024). The 2022 Vaccines Against Shigella and Enterotoxigenic Escherichia coli (VASE) Conference: Summary of breakout workshops. *Vaccine*, 42(7), 1445-1453.
- [10] Bayona Rojas, M.A., Quintero Cortes, S.A. (2023) *Campylobacter jejuni* una problemática actual en salud pública. *Revista Medicina* No, 142. 2023. 45(3):472-483. DOI: <https://doi.org/10.56050/01205498.2274>
- [11] Ben Romdhane, R. y Merle, R. (2021). The data behind risk análisis of *Campylobacter jejuni* and *Campylobacter coli*. *Current Topics of Microbiology and Immunology*. 431, 25-58. doi: 10.1007/978-3-030-65481-8_2
- [12] Bessa, M. C., Haas, S., Ramos, R. C., Rocha, R., Voss-Rech, D., Rebelatto, R., Duarte, S. C., Coldebella, A., & Vaz, C. S. L. (2020). Survey of Campylobacter in foods implicated in foodborne diseases in Southern Brazil. *Rev Inst Med Trop Sao Paulo*, 62, e90. doi: 10.1590/S1678-9946202062090.
- [13] Bester L. A. Essack S. Y. (2008). Prevalence of antibiotic resistance in Campylobacter isolates from commercial poultry suppliers in KwaZulu-Natal, South Africa, *Journal of Antimicrobial Chemotherapy*. 62, no. 6, 1298–1300, 2-s2.0-56649091420, <https://doi.org/10.1093/jac/dkn408>.
- [14] Blaser, M.J., Berkowitz, I.D., LaForce, F.M. et al. (1979). " *Campylobacter* enteritis: clinical and epidemiologic features." *Ann Intern Med* 91, 179–185. DOI: <https://doi.org/10.7326/0003-4819-91-2-179>
- [15] Bravo, F., Céspedes, A., Morales, P., & Chanqueo, L. (2019). Bacteriemia por Campylobacter jejuni en un paciente con infección por VIH en etapa SIDA. *Revista Chilena de Infectología: Organo Oficial de La Sociedad Chilena de Infectología*, 36(5), 663–666. <https://doi.org/10.4067/s0716-10182019000500663>
- [16] Bush, L. M. (2020). Infecciones por *Campylobacter*. Manual MSD versión para público general. Recuperado el 7 de mayo de 2024, de <https://www.msdmanuals.com/es-co/hogar/infecciones/infecciones-bacterianas-bacterias-gramnegativas/infecciones-por-Campylobacter>.
- [17] Butzler J.P., Dereume, JP, Barbier, P., Smekerns, L, Dekeyser, J. et al. (1977). L'origine digestive des septicemias á *Campylobacter*. *Nouv. Press. Med.* 68(12): 1033-1035. PMID: 850616.
- [18] Butzler J.P., Skirrow M. (1979). *Campylobacter* enteritis. *Clin. Gastroenterol.* 8(3): 737-765. PMID: 387302
- [19] Butzler JP, Dekeyser P, Detrain M Dehaen F. (1973). Related vibrio in stools. *J Pediat* 82(3): 493-495. doi: 10.1016/s0022-3476(73)80131-3
- [20] Campylobacter. (2014). Webqueries.com. <https://www.webqueries.com/health/up-to-date/campylobacter/campylobacter-13100>
- [21] CDC Centers for Disease Control and Prevention (CDC). (2019). "Antibiotic Resistance Threats in the United States, 2019." CDC, Atlanta, GA, USA. <https://www.cdc.gov/drugresistance/pdf/threats-report/2019-ar-threats-report-508.pdf>
- [22] CDC. (2024). About Campylobacter infection. *Campylobacter Infection (Campylobacteriosis)*. <https://www.cdc.gov/campylobacter/about/index.htm>
- [23] Cervantes-García, E. (2020). Campylobacter: emerging or re-emerging. *Mexican Journal of Clinical Pathology and Laboratory Medicine* 67(3).
- [24] Chala, G., Eguale, T., Abunna, F., Asrat, D. and Stringer, A. (2021). Identification and characterization of Campylobacter species in livestock, humans and water in livestock-owning households in peri-urban Addis Ababa, Ethiopia: a one-health approach. *Frontiers in Public Health* , 9, 750551. doi: 10.3389/fpubh.2021.750551.
- [25] Chibwe, M., Odume, O. N., & Nnadozie, C. F. (2023). Assessment of risk of exposure to Campylobacter species and their antibiotic-resistant genes from selected rivers in the Eastern Cape, South Africa. *Environmental Pollution*, 338, 122625. doi: 10.1016/j.envpol.2023.122625.
- [26] Chowdhury, M. A. H., Ashrafudoulla, M., Mevo, S. I. U., Mizan, M. F. R., Park, S. H., & Ha, S. D. (2023). Current and future interventions for improving poultry health and poultry food safety and security: A comprehensive review. *Comprehensive Reviews in Food Science and Food Safety*, 22(3), 1555-1596. doi: 10.1111/1541-4337.13121.

- [27] Chromagar. (2024). Chromagar Campylobacter. recovered from <https://www.chromagar.com/en/product/chromagar-Campylobacter/>
- [28] City of Toronto. (2010). Campylobacter fact sheet. <https://www.toronto.ca/community-people/health-wellness-care/diseases-medications-vaccines/campylobacter-fact-sheet/> Arthritis particularly of the ankles, knees, wrists and joints of the hands and feet.
- [29] Cohen, R., Minodier, P., Hau, I., Filleron, A., Werner, A., Haas, H., Raymond, J., Thollot, F. y Bellaïche, M. (2023). Anti-infective treatment of gastro-intestinal tract infections in children. *Infectious Diseases Now*. 53(8S), 104784. doi: 10.1016/j.idnow.2023.104784
- [30] Collins, J. P., Shah, H. J., Weller, D. L., Ray, L. C., Smith, K., McGuire, S., Trevejo, R. T., Jervis, R. H., Vugia, D. J., Rissman, T., Garman, K. N., Lathrop, S., LaClair, B., Boyle, M. M., Harris, S., Kufel, J. Z., Tauxe, R. V., Bruce, B. B., Rose, E. B., Griffin, P. M., & Payne, D. C. (2022). Preliminary Incidence and Trends of Infections Caused by Pathogens Transmitted Commonly Through Food - Foodborne Diseases Active Surveillance Network, 10 U.S. Sites, 2016-2021. *MMWR Morb Mortal Wkly Rep*, 71(40), 1260-1264. doi: 10.15585/mmwr.mm7140a2
- [31] Crabtree D, Jessica Williams, J, Leonte, AM , Betts, G (2016). Thermo Fisher Scientific, Basingstoke, UK, 2Campden BRI Group, Chipping Campden,UK. MicroVal Validation of the Thermo Scientific Brilliance Campy Count Enumeration Method in Comparison to EN ISO 10272-2:2017 in Accordance with ISO 16140-2.
- [32] Debelo, M., Mohammed, N., Tiruneh, A., & Tolosa, T. (2022). Isolation, identification and antibiotic resistance profile of thermophilic Campylobacter species from Bovine, Knives and personnel at Jimma Town Abattoir, Ethiopia. *PLoS One*, 17(10), e0276625. doi: 10.1371/journal.pone.0276625.
- [33] Dubey, D., Kumar, S., Rawat, A., Guleria, A., Kumari, R., Ahmed, S., Singh, R., Misra, R., & Kumar, D. (2021). NMR-Based Metabolomics Revealed the Underlying Inflammatory Pathology in Reactive Arthritis Synovial Joints. *Journal of Proteome Research*, 20(11), 5088-5102. doi: 10.1021/acs.jproteome.1c00620
- [34] ElGhany, W. A. A. (2019). One health approach of campylobacteriosis in Egypt: An emerging zoonotic disease. *Journal of Infection in Developing Countries*, 13(11), 956-960. doi: 10.3855/jidc.11860
- [35] Emberland, K. E., Wensaas, K. A., Litleskare, S., Iversen, A., Hanevik, K., Langeland, N., & Rortveit, G. (2022). Clinical features of gastroenteritis during a large waterborne Campylobacter outbreak in Askøy, Norway. *Infection*, 50(2), 343-354. <https://doi.org/10.1007/s15010-021-01652-3>
- [36] Epping, L., Walther, B., Piro, R. M., Knüver, M. T., Huber, C., Thürmer, A., Flieger, A., Fruth, A., Janecko, N., Wieler, L. H., Stingl, K., & Semmler, T. (2021). Genome-wide insights into population structure and host specificity of Campylobacter jejuni. *Scientific Reports*, 11(1), 10358. doi: 10.1038/s41598-021-89683-6
- [37] Flórez I.D, Contreras, J, Sierra, J, Lugo, L.H. (2013). Colombia. Ministry of Health and Social Protection, Colciencias, University of Antioquia. Quick reference guide for prevention, diagnosis and treatment of acute diarrheal disease in children under 5 years of age. Bogotá, 2013. Guide No. 8. For use by health professionals. 1 st Ed. Ministry of Health and Social Protection - Colciencias. Colombia ISBN: 978-958-8838-43-4
- [38] Fonseca, M., Heider, L. C., Stryhn, H., McClure, J. T., Léger, D., Rizzo, D., Warder, L., Dufour, S., Roy, J. P., Kelton, D. F., Renaud, D., Barkema, H. W., & Sanchez, J. (2023). Antimicrobial use and its association with the isolation of and antimicrobial resistance in Campylobacter spp. recovered from fecal samples from Canadian dairy herds: A cross-sectional study. *Preventive Veterinary Medicine*, 215, 105925. doi: 10.1016/j.prevetmed.2023.105925.
- [39] Fredsgaard, L., Thorsteinsson, K., Bundgaard-Nielsen, C., Ammitzbøll, N., Leutscher, P., Chai, Q., Jensen, A. M., Sørensen, S., Pedersen, L. M., Hagstrøm, S., & Arenholt, L. T. S. (2021). Description of the voided urinary microbiota in asymptomatic prepubertal children - A pilot study. *Journal of Pediatric Urology*, 17(4), 545.e1-545.e8. doi: 10.1016/j.jpuro.2021.03.019
- [40] García-Sánchez, C., García-Rodríguez, J., & Ruiz-Carrasco, G. (2024). Clinical and microbiological findings of recurrent Campylobacter spp. gastroenteritis in a tertiary care hospital. *Enferm Infecc Microbiol Clin (Engl Ed)*, 42(5), 257-262. doi: 10.1016/j.eimce.2022.09.013.
- [41] Gebreyes, WA, Jackwood, D., de Oliveira, CJB, Lee, CW, Hoet, AE and Thakur, S. (2020). Molecular epidemiology of infectious zoonotic diseases and livestock. *Spectrum Microbiology*. 8(2), doi: 10.1128/microbiolspec.AME-0011-2019.
- [42] Ghosh, D., Chowdhury, G., Samanta, P., Shaw, S., Deb, A. K., Bardhan, M., Manna, A., Miyoshi, S. I., Ramamurthy, T., Dutta, S., & Mukhopadhyay, A. K. (2022). Characterization of diarrhoeagenic Escherichia coli with special reference to antimicrobial resistance isolated from hospitalized diarrhoeal

- patients in Kolkata (2012-2019), India. *Journal of Applied Microbiology*, 132(6), 4544-4554. <https://doi.org/10.1111/jam.15548>
- [43] Gordat, K., Kosyra, M., Sadkowska-Todys, M. (2021). Campylobacteriosis in Poland in 2018-2019. *Przegl Epidemiologic*, 75(4), 656-664. doi: 10.32394/pe.75.61
- [44] Grabowski, L., Pierzynowska, K., Gaffke, L., Cyske, Z., Mincewicz, G., & Węgrzyn, G. (2023). The use of phage display systems to combat infectious diseases in poultry: diagnostic, vaccine, and therapeutic approaches. *Journal of Applied Microbiology*, 134(1), lxac012. doi: 10.1093/jambio/lxac012
- [45] Grace, D., Wu, F., & Havelaar, A. H. (2020). MILK Symposium review: Foodborne diseases from milk and milk products in developing countries—Review of causes and health and economic implications. *Journal of Dairy Science*, 103(11), 9715-9729. doi: 10.3168/jds.2020-18323
- [46] Hannu T, Mattila, L, Rautelin, H, Pelkonen, P, Lahdenne, P, Siitonen, A, Leirisalo-Repo M. (2002). *Campylobacter*-triggered reactive arthritis: population-based study. *Rheumatology*, 41:312-318. DOI: <https://doi.org/10.1093/rheumatology/41.3.312>
- [47] Harris, S., Zablotzky-Kufel, J., Houck, K., Devine, C. J., Lau, C. E., Tauxe, R. V., Bruce, B. B., & Griffin, P. M. (2023). Preliminary Incidence and Trends of Infections Caused by Pathogens Transmitted Commonly Through Food - Foodborne Diseases Active Surveillance Network, 10 U.S. Sites, 2022. *MMWR Morbidity and Mortality Weekly Report*, 72(26), 701-706. doi: 10.15585/mmwr.mm7226a1
- [48] Healy, J. M., Ray, L., Tack, D. M., Eikmeier, D., Tobin-D'Angelo, M., Wilson, E., Hurd, S., Lathrop, S., McGuire, S. M., & Bruce, B. B. (2024). Modelling counterfactual incidence during the transition towards culture-independent diagnostic testing. *International Journal of Epidemiology*, 53(1), dyad133. <https://doi.org/10.1093/ije/dyad133>
- [49] Heimesaat, M. M., Backert, S., Alter, T., & Bereswill, S. (2021). Human Campylobacteriosis-A Serious Infectious Threat in a One Health Perspective. *Current Topics in Microbiology and Immunology*, 431, 1-23. https://doi.org/10.1007/978-3-030-65481-8_1
- [50] Heydari, H., Iranikhah, A., Ghasemi, A., Mohammadbeigi, A., Sadat-Mirei, S. A., Shams, S., & Kermani, S. (2024). Evaluation of the prevalence of *Aeromonas* spp., *Campylobacter* spp., and *Clostridioides difficile* in immunocompromised children with diarrhea. *BMC Infectious Diseases*, 24(1), 512. doi: 10.1186/s12879-024-09372-3
- [51] Hoshino, T., Kondo, R., Inoue, K., Fujita, K., Nakamura, K., Tanaka, R. (1987). "Microscopic examination of clinical isolates of *Campylobacter pylori* using gram staining and electron microscopy." *J Gastroenterol*. 22 Suppl 3:14-9. doi: 10.1007/BF02779677.
- [52] Islam, M. R., Martinez-Soto, C. E., Lin, J. T., Khursigara, C. M., Barbut, S., & Anany, H. (2023). A systematic review from basics to omics on bacteriophage applications in poultry production and processing. *Critical Reviews in Food Science and Nutrition*, 63(18), 3097-3129. <https://doi.org/10.1080/10408398.2021.1984200>.
- [53] ISO (International Organization for Standardization) (2017). Microbiology of the food chain -- Preparation of test samples, initial suspension and decimal dilutions for microbiological examination -- Part 1: General rules for the preparation of the initial suspension and decimal dilutions. ISO 6887-1:2017/FDAmD 1 for the Brilliance Campy Count media. ISSN 0185-6014
- [54] Itoh, N., Akazawa, N., Ishibana, Y., Hamada, S., Hagiwara, S., & Murakami, H. (2022). Femoral osteomyelitis caused by oral anaerobic bacteria with mixed bacteremia of *Campylobacter rectus* and *Parvimonas micra* in a chronic periodontitis patient: a case report. *BMC Infectious Diseases*, 22(1), 613. doi: 10.1186/s12879-022-07573-2
- [55] Karmali, M.A., Simor, E., Roscoe, M., Fleming, P.C., Smith, S.S., Lane, J. (1986). Evaluation of a blood-free, charcoal-based, selective medium for the isolation of *Campylobacter* organisms from feces. 1986. *J Clin Microbiol* Mar;23(3):456-9. DOI: 10.1128/jcm.23.3.456-459.
- [56] Khan, I. A., Nayak, B., Markandey, M., Bajaj, A., Verma, M., Kumar, S., Singh, M. K., Kedia, S., & Ahuja, V. (2021). Differential prevalence of pathobionts and host gene polymorphisms in chronic inflammatory intestinal diseases: Crohn's disease and intestinal tuberculosis. *PLoS One*, 16(8), e0256098. doi: 10.1371/journal.pone.0256098
- [57] Kirishima, M., Yokoyama, S., Matsuo, K., Hamada, T., Shimokawa, M., Akahane, T., Sugimoto, T., Tsurumaru, H., Ishibashi, M., Mataka, Y., Ootsuka, T., Nomoto, M., Hayashi, C., Horiguchi, A., Higashi, M., & Tanimoto, A. (2022). Gallbladder microbiota composition is associated with pancreaticobiliary and gallbladder cancer prognosis. *BMC Microbiology*, 22(1), 147. doi: 10.1186/s12866-022-02557-3
- [58] Kittler, S., Steffan, S., Peh, E. y Plötz, M. (2021). Phage biocontrol of *Campylobacter*: A one health approach. *Current Topics in Microbiology and Immunology* 431, 127-168. doi: 10.1007/978-3-030-65481-8_6

- [59] Kocot, A. M., Briers, Y., & Plotka, M. (2023). Phages and engineered lysins as an effective tool to combat Gram-negative foodborne pathogens. *Comprehensive Reviews in Food Science and Food Safety*, 22(3), 2235-2266. doi: 10.1111/1541-4337.13145.
- [60] Kosola, M., Rimhanen-Finne, R., Markkula, A., & Lundén, J. (2024). Association between food control inspection grades and regional incidence of infectious foodborne diseases in Finland. *International Journal of Environmental Health Research*, 34(2), 885-897. <https://doi.org/10.1080/09603123.2023.2183942>
- [61] Kuhn, K. G., Hvass, A. K., Christiansen, A. H., Ethelberg, S., & Cowan, S. A. (2021). Sexual Contact as Risk Factor for *Campylobacter* Infection, Denmark. *Emerging Infectious Diseases*, 27(4), 1133-1140. doi: 10.3201/eid2704.202337
- [62] Kuhn, K. G., Nygård, K. M., Guzman-Herrador, B., Sunde, L. S., Rimhanen-Finne, R., Trönnberg, L., Jepsen, M. R., Ruuhela, R., Wong, W. K., & Ethelberg, S. (2020). *Campylobacter* infections expected to increase due to climate change in Northern Europe. *Scientific Reports*, 10(1), 13874. doi: 10.1038/s41598-020-70593-y
- [63] Kumagai, Y., Pires, S. M., Kubota, K., & Asakura, H. (2020). Attributing Human Foodborne Diseases to Food Sources and Water in Japan Using Analysis of Outbreak Surveillance Data. *Journal of Food Protection*, 83(12), 2087-2094. doi: 10.4315/JFP-20-151
- [64] Lafleur, S., Mutombo, J. M. M., Mathieu, A., Beuparlant, C. J., Minne, X., Chandad, F., Droit, A., & Houde, V. P. (2022). Multi-Omics Data Integration Reveals Key Variables Contributing to Subgingival Microbiome Dysbiosis-Induced Inflammatory Response in a Hyperglycemic Microenvironment. *International Journal of Molecular Sciences*, 24(10), 8832. <https://doi.org/10.3390/ijms241088322>
- [65] Lafleur, S., Bodein, A., Mutombo, J. M. M., Mathieu, A., Beuparlant, C. J., Minne, X., Chandad, F., Droit, A., & Houde, V. P. (2023). Multi-Omics Data Integration Reveals Key Variables Contributing to Subgingival Microbiome Dysbiosis-Induced Inflammatory Response in a Hyperglycemic Microenvironment. *International Journal of Molecular Sciences*, 24(10), 8832. <https://doi.org/10.3390/ijms241088322>
- [66] Lamagni, TL, B G Evans, B.G. M Shigematsu, M., E M Johnson, E.M. (2001). Emerging trends in the epidemiology of invasive mycoses in England and Wales (1990-9). 126(3):397-414. doi: 10.1017/s0950268801005507.
- [67] Lastovica, A.J., Le Roux, E., Penner, J.L. (2014). "Newell and Lastovica: A Concise Review of the *Campylobacter* Genus and Its Medically Important Species." *Euro J Gastroenterol Hepatol*. 26(1): 1-7. doi: 10.1097/MEG.0b013e328365e0b0.
- [68] Lazo-Láscarez, S., Gutiérrez, L. Z., Duarte-Martínez, F., Romero Zúñiga, J. J., Arias Echandi, M. L., & Muñoz-Vargas, L. (2021). Antimicrobial Resistance and Genetic Diversity of *Campylobacter* spp. Isolated from Broiler Chicken at Three Levels of the Poultry Production Chain in Costa Rica. *Journal of Food Protection*, 84(12), 2143-2150. doi: 10.4315/JFP-21-
- [69] Locht, H., Krogfelt, K.A. (2002). Comparison of rheumatological and gastrointestinal symptoms after infection with *Campylobacter jejuni/coli* and enterotoxigenic *Escherichia coli*. *Annals of the Rheumatic Diseases*. 61:448-452. DOI:10.1136/ard.61.5.448
- [70] Louis, V R, Gillespie, IA, O'Brien, SJ, Russek-Cohen E, Pearson AD, Colwell RR. (2005). Temperature-Driven *Campylobacter* seasonality in England and Wales. *Applied and Environmental Microbiology*. 71:85-92 DOI: <https://doi.org/10.1128/AEM.71.1.85-92.2005>
- [71] Lubber P., Wagner J., Hahn H., Bartelt E. (2003). Antimicrobial resistance in *Campylobacter jejuni* and *Campylobacter coli* strains isolated in 1991 and 2001-2002 from poultry and humans in Berlin, Germany, *Antimicrobial Agents and Chemotherapy*. (2003) 47, no. 12, 3825–3830, 2-s2.0-0345306167, <https://doi.org/10.1128/AAC.47.12.3825-3830.2003>
- [72] Ly, L., Jiang, H., Chen, X., Wang, Q., Wang, K., Ye, J., Li, Y., Fang, D., Lu, Y., Yang, L., Gu, S., Chen, J., Diao, H., Yan, R., & Li, L. (2021). The Salivary Microbiota of Patients with Primary Biliary Cholangitis Is Distinctive and Pathogenic. *Frontiers in Immunology*, 12, 713647. doi: 10.3389/fimmu.2021.713647
- [73] Manrique-Abril FG, Billon Y Tigne D, Bello SE, Ospina JM. (2006). Agentes causantes de diarrea en niños menores de 5 años en Tunja, Colombia. *Revista de Salud Pública* 8(1):88-97. DOI:10.1590/S0124-00642006000100008
- [74] Maraki, S., Mavromanolaki VE, Stafylaki D, Iliaki-Giannakoudaki E, Kasimati A. (2022). Prevalence and antimicrobial resistance of bacterial enteropathogens in Crete, Greece, during 2011 -*Acta Microbiol Immunol Hung*. 2024 Feb 12;71(1):69-75. doi: 10.1556/030.2024.02214

- [75] Mardones P, G., & López M, J. (2017). Implicancias de *Campylobacter* spp. como Patógeno Alimentario. Chilean Journal of Agricultural & Animal Sciences: Ex Agro-Ciencia, 33(ahead), 0–0. <https://doi.org/10.4067/s0719-38902017005002005>
- [76] Mao, N., Giesecke, J. (2001). Incidence of Guillain-Barré syndrome following infection with *Campylobacter jejuni*. Am. J. Epidemiol. 2001, 153:610-614. DOI: 10.1093/aje/153.6.610
- [77] MacCartthy 2024, C. J., Kirkcaldy, R. D., & Workowski, K. (2022). Enteric Infections in men who have sex with Men. Clinical Infectious Diseases, 74(Suppl_2), S169-S178. doi: 10.1093/cid/ciac061
- [78] Melenotte, C., Mezouar, S., Mège, J. L., Gorvel, J. P., Kroemer, G., & Raoult, D. (2020). Bacterial infection and non-Hodgkin's lymphoma. Crit Rev Microbiol, 46(3), 270-287. doi: 10.1080/1040841X.2020.1760786
- [79] Moffatt, C. R. M., Fearnley, E., Bell, R., Wright, R., Gregory, J., Sloan-Gardner, T., Kirk, M., & Stafford, R. (2020). Characteristics of *Campylobacter* Gastroenteritis Outbreaks in Australia, 2001 to 2016. Foodborne Pathogens and Disease, 17(5), 308-315. doi: 10.1089/fpd.2019.2731.
- [80] Murray, R. T., Cruz-Cano, R., Nasko, D., Blythe, D., Ryan, P., Boyle, M. M., Wilson, S. M., & Sapkota, A. R. (2020). Association between private drinking water wells and the incidence of *Campylobacteriosis* in Maryland: An ecological analysis using Foodborne Diseases Active Surveillance Network (FoodNet) data (2007–2016). Environmental Research, 188, 109773. <https://doi.org/10.1016/j.envres.2020.109773>
- [81] Musick, W. L. (2023). Case Commentary: An espresso, a free puppy, and multidrug-resistant *Campylobacter*. Antimicrobial Agents and Chemotherapy, 67(11), e0075223. doi: 10.1128/aac.00752-23
- [82] Nachamkin, I., Allos, B. M., Ho, T. (1998). *Campylobacter* species and Guillain -Barré Syndrome . Clinical Microbiology Reviews. 11(3): 555-567. DOI: <https://doi.org/10.1128/cmr.11.3.555>.
- [83] Nomura, R., Nagasawa, Y., Misaki, T., Ito, S., Naka, S., Okunaka, M., Watanabe, M., Tsuzuki, K., Matsumoto-Nakano, M., & Nakano, K. (2023). Distribution of periodontopathic bacterial species between saliva and tonsils. Odontology, 111(3), 719-727. <https://doi.org/10.1007/s10266-022-00776-8>
- [84] Norström M., Johnsen G., Hofshagen M., Tharaldsen H., Kruse H. (2007). Antimicrobial resistance in *Campylobacter jejuni* from broilers and broiler house environments in Norway, Journal of Food Protection. 70, no. 3, 736–738, 2-s2.0-33947366895
- [85] Olejniczak-Staruch, I., Ciężyńska, M., Sobolewska-Sztychny, D., Narbutt, J., Skibińska, M. y Lesiak, A. (2021). Alteraciones de la piel y el microbioma intestinal en la psoriasis y la artritis psoriásica. Revista Internacional de Ciencias Moleculares, 22 (8), 3998. <https://doi.org/10.3390/ijms22083998>
- [86] Ondrikova, N., Clough, H. E., Douglas, A., Iturriza-Gomara, M., Larkin, L., Vivancos, R., Harris, J. P., & Cunliffe, N. A. (2021). Differential impact of the COVID-19 pandemic on laboratory reporting of norovirus and *Campylobacter* in England: A modelling approach. PLoS One, 16(8), e0256638. doi: 10.1371/journal.pone.0256638
- [87] Ordonez -Smith M. (1984). Etiology of Bacterial Enteritis in Humans. Frequency of *Campylobacteriosis*. Colombia No. 828. Tribuna Médica. 70(11):25-30.
- [88] Ordonez Smith de Danies M. (1985). Etiology of Bacterial Enteritis in Humans. Frequency of *Campylobacteriosis*. Mexico. No. 568. Tribuna Médica. 68(5):52-58.
- [89] Ordonez Smith de Danies M. (1985). Etiology of Bacterial Enteritis in Humans. Frequency of *Campylobacteriosis*. Venezuela No. 743. Tribuna Médica 62(11):31-37.
- [90] Ordonez Smith de Danies M (1985). Etiology of Bacterial Enteritis in Humans. Frequency of *Campylobacteriosis*. Central America, Panama and Dominican Republic.No.424.Tribuna Médica 36(12)37-42.
- [91] Ordonez Smith de Danies M. (1985). Etiology of bacterial enteritis in humans: frequency of *campylobacteriosis*. Etiology of Bacterial Enteritis in Humans. Frequency of *campylobacteriosis*. Colombian Journal of Pediatrics and Puericulture. 36(2):78-93. ID:lil-38895
- [92] Ordonez Smith de Danies, M. (1985). Etiology of Bacterial Enteritis in Humans. Frequency of *Campylobacteriosis*. Tribuna Médica. Ecuador No. 164. 15(2):31-36.
- [93] Ordonez-Smith, M. (2014). Practical guidelines for clinical bacteriology laboratories. Editorial Medica Panamericana. 79-84. ISBN: 978-958-8443-47-8.
- [94] Ordonez-Smith de Danies, M. (2024). Discovering the causes of irritable bowel syndrome. The role of fungi, bacteria and parasites. Interview with Chile's University. YouTube.
- [95] Otsuka, Y., Hagiya, H., Takahashi, M., Fukushima, S., Maeda, R., Sunada, N., Yamada, H., Kishida, M., Fujita, K., & Otsuka, F. (2023). Clinical characteristics of *Campylobacter* bacteremia: A multicenter retrospective study. Scientific Reports, 13(1), 647. doi: 10.1038/s41598-022-27330-4
- [96] Palomares Velosa, J. E., Salman, M. D., Roman-Muniz, I. N., Reynolds, S., Linke, L., Magnuson, R., McConnel, C. S., & Rao, S. (2021). Socio-ecological Factors of Zoonotic Diseases Exposure in Colorado Dairy Workers. J Agromedicine, 26(2), 151-161. doi: 10.1080/1059924X.2020.1725700.

- [97] Parfenov, A. I., Kagramanova, A. V., Khomeriki, S. G., & Kulakov, D. S. (2023). Modern concept of differential diagnosis of colitis: from G.F. Lang to the present day. A review. *Terapevticheskii arkhiv*, 95(12), 1022-1030. doi: 10.26442/00403660.2023.12.202496
- [98] Peh, E., Szott, V., Reichelt, B., Friese, A., Rösler, U., Plötz, M., & Kittler, S. (2023). Bacteriophage cocktail application for *Campylobacter* mitigation - from in vitro to in vivo. *BMC Microbiology*, 23(1), 209. doi: 10.1186/s12866-023-02963-1.
- [99] Pietropaoli, D., Del Pinto, R., Ferri, C., Ortu, E., & Monaco, A. (2019). Definition of hypertension-associated oral pathogens in National Health and Nutrition Examination Survey (NHANES). *Journal of Periodontology*, 90(8), 866-876. doi: 10.1002/JPER.19-0046.
- [100] Pires, S.M., Vieira A.R., Perez, E, Lo Fo Wong, D, Hald, T. (2021) Attributing human foodborne illness to food sources and water in Latin America and the Caribbean using data from outbreak investigations. *Int J Food Microbiol.*152(3):129-138. DOI: 10.1016/j.ijfoodmicro.2011.04.018
- [101] Piwat, S., Basic, A., Pahumunto, N., Teanpaisan, R., & Dahlen, G. (2024). Periodontal diseases in Thai schoolchildren. Clinical and microbiological observations. *Odontology*, 112(1), 232-241. doi: 10.1007/s10266-023-00817-w. Epub 2023 May 8
- [102] Pogreba-Brown K, Austhof E, Armstrong A, Schaefer K, Villa Zapata L, McClelland DJ, Batz MB, Kuecken M, Riddle M, Porter CK, Bazaco MC. (2020). Chronic Gastrointestinal and Joint-Related Sequelae Associated with Common Foodborne Illnesses: A Scoping Review. *Foodborne Pathog Dis.* 17(2):67-86. doi: 10.1089/fpd.2019.2692.
- [103] Púa Torrejón RC, Bermejo Gómez A, Gómez-Carpintero García A, Villares Alonso R. (2022). Uncommon features of Miller-Fisher Syndromes. Case report and review of the literature. Características infrecuentes del síndrome de Miller-Fisher. Revisión de la literatura a propósito de un caso. *Pediatr.*:55(1):30-35 <https://revistapediatria.org/rp/article/view/264/340>
- [104] Qin S.-S., Wu C.-M., Wang Y., Jeon B., Shen Z.-Q., Wang Y., Zhang Q., Shen J.-Z. (2011). Antimicrobial resistance in *Campylobacter coli* isolated from pigs in two provinces of China, *International Journal of Food Microbiology*. 146, no. 1, 94–98, 2-s2.0-79953064998, <https://doi.org/10.1016/j.ijfoodmicro.2011.01.035>
- [105] Ribeiro, L. N. M., de Paula, E., Rossi, D. A., Martins, F. A., de Melo, R. T., Monteiro, G. P., Breikreitz, M. C., Goulart, L. R., & Fonseca, B. B. (2021). Nanocarriers From Natural Lipids With In Vitro Activity Against *Campylobacter jejuni*. *Frontiers in Cellular and Infection Microbiology*, 10, [571040]. <https://doi.org/10.3389/fcimb.2020.571040>
- [106] Rodríguez Cordero D.R., Restrepo-Méndez, S, Ortiz, BT.(2024). Prevalence and risk factors of *Campylobacter coli* in fresh chicken carcasses from retail sites in Bogotá, Colombia. *Heliyon*. 10:article 4. DOI: <https://doi.org/10.1016/j.heliyon.2024.e26356>
- [107] Rodríguez-Hernández, A. P., Márquez-Corona, M. L., Pontigo-Loyola, A. P., Medina-Solís, C. E., Ximenez-Fyvie, L. A. (2019). Subgingival Microbiota of Mexicans with Type 2 Diabetes with Different Periodontal and Metabolic Conditions. *International Journal of Environmental Research and Public Health*, 16(17), 3184. <https://doi.org/10.3390/ijerph16173184>
- [108] Rousou, X., Furuya-Kanamori, L., Kostoulas, P., & Doi, S. A. R. (2023). Diagnostic accuracy of multiplex nucleic acid amplification tests for *Campylobacter* infection: a systematic review and meta-analysis. *Pathog Glob Health*, 117(3), 259-272. doi: 10.1080/20477724.2022.2097830.
- [109] Ruiz J., Marco F., Oliveira I., Vila J., Gascón J. (2007). Trends in antimicrobial resistance in *Campylobacter* spp. causing traveler's diarrhea, *Acta Pathologica, Microbiologica, et Immunologica Scandinavica*. 115, no. 3, 218–224, 2-s2.0-33947268751, https://doi.org/10.1111/j.1600-0463.2007.apm_567.x.
- [110] Sam W. I. C., Lyons M. M., Waghorn D. J. (1999). Increasing rates of ciprofloxacin resistant *Campylobacter*. *Journal of Clinical Pathology*. 52, no. 9, 709, 2-s2.0-0032859738
- [111] Sapp, A. C., Nane, G. F., Amaya, M. P., Niyonzima, E., Hategekimana, J. P., VanSickle, J. J., Gordon, R. M., & Havelaar, A. H. (2023). Estimates of disease burden caused by foodborne pathogens in contaminated dairy products in Rwanda. *BMC Public Health*, 23(1), 657. doi: 10.1186/s12889-023-15204-x.
- [112] Scallan Walter, E. J., McLean, H. Q., & Griffin, P. M. (2020). Hospital Discharge Data Underascertain Enteric Bacterial Infections Among Children. *Foodborne Pathogens and Disease*, 17(9), 530-532.
- [113] Scallan, W. E. J., Crim, S. M., Bruce, B. B., & Griffin, P. M. (2020). Incidence of *Campylobacter*-Associated Guillain-Barré Syndrome Estimated from Health Insurance Data. *Foodborne Pathogens and Disease*, 17(1), 23-28. doi: 10.1089/fpd.2019.2652

- [114] Scallan, W. E. J., Crim, S. M., Bruce, B. B., & Griffin, P. M. (2019). Postinfectious Irritable Bowel Syndrome After *Campylobacter* Infection. *American Journal of Gastroenterology*, 114(10), 1649-1656. doi: 10.14309/ajg.0000000000000408
- [115] Schiaffino Josh, M., Colston, J.M. Paredes, M. Olortegui, F, Pisanic, N, Burga, R, Peñataro-Yori, P, . Kosek, M. N. (2019). Antibiotic Resistance of *Campylobacter* species in a Pediatric Cohort Study. *Antimicrobial Agents and Chemotherapy*. 63(2): 1911-1918.
- [116] Schiaffino, F., Parker, C. T., Garcia Bardales, P. F., Huynh, S., Manzanares Villanueva, K., Mourkas, E., Pascoe, B., Peñataro Yori, P., Paredes Olortegui, M., Houpt, E. R., Liu, J., Cooper, K. K., & Kosek, M. N. (2024). Novel rpsK / rpsD primer-probe assay improves detection of *Campylobacter jejuni* and *Campylobacter coli* in human stool. *PLoS Neglected Tropical Diseases*, 18(3), e0012018. doi: 10.1371/journal.pntd.0012018.
- [117] Sebald, M.; Véron, M. (1963). Teneur en bases de l'ADN et classification des vibrions. *Ann. Inst. Pasteur*. 105:897-910. PMID: 14098102. Accessed at: <https://www.marinespecies.org/aphia.php?p=taxdetails&id=570218> on 2024-05-19
- [118] Seo H., Duan, Q. y Zhang, W. (2020). Vaccines against gastroenteritis, current progress and challenges. *Gut Microbes*. 11(6), 1486-1517. doi: 10.1080/19490976.2020.1770666
- [119] Sharafutdinov, I., Tegtmeier, N., Müsken, M., Backert, S. (2022). *Campylobacter jejuni* Serine Protease HtrA Induces Paracellular Transmigration of Microbiota across Polarized Intestinal Epithelial Cells. *Biomolecules*, 12(4), 521. doi: 10.3390/biom12040521
- [120] Shioda, SM, Jensen, JD, Jakobsen, L., Ethelberg, S. y Christensen, T. (2022). Health and Economic burden of seven foodborne diseases in Denmark, 2019. *Foodborne Pathology Disease* 19(9), 581-589. doi: 10.1089/fpd.2022.
- [121] Shioda, K., Brouwer, A. F., Lamar, F., Mucache, H. N., Levy, K., Freeman, M. C. (2023). Opportunities to Interrupt Transmission of Enteropathogens of Poultry Origin in Maputo, Mozambique: A Transmission Model Analysis. *Environmental Health Perspectives*, 131(11), 117004. doi: 10.1289/EHP12314.
- [122] Silva, J, Leite, D., Fernandes, M, Mena, C, Gibbs, P.A., Teixeira, P. (2011). *Campylobacter* spp. as a Foodborne Pathogen: *Frontier Microbiology*. 2:200. doi: 10.3389/fmicb.2011.00200
- [123] Simms, A. J., Kobayashi, T., Schwartzhoff, P. V., & Sekar, P. (2022). Prosthetic hip infection due to *Campylobacter jejuni*. *BMJ Case Reports*, 15(3), e248240. doi: 10.1136/bcr-2021-248240.
- [124] Skirrow, M.B. (1977). "*Campylobacter* enteritis: a "new" disease." *British medical journal* 2.6139: 9-11.
- [125] Smith, O. M., Snyder, W. E., & Owen, J. P. (2020). Are we overestimating risk of enteric pathogen spillover from wild birds to humans? *Biological Reviews*, 95(3), 652-679. doi: 10.1111/brv.12581
- [126] Takayanagi, K., Kanamori, F., Ishii, K., Yokoyama, K., Araki, Y., Sumitomo, M., Maeda, S., Goto, S., Ota, S., Nagata, Y., Nishihori, M., Maesawa, S., Izumi, T., Takasu, S., & Saito, R. (2023). Higher abundance of *Campylobacter* in the oral microbiome of Japanese patients with moyamoya disease. *Scientific Reports*, 13(1), 18545. <https://doi.org/10.1038/s41598-023-45755-3>
- [127] Tam, C. C., L. R. Rodrigues, and S. JO'Brien. (2003). Guillain-Barré Syndrome associated with *Campylobacter jejuni* infection in England, 2000-2001. *Clin. Infect. Dis.* 2003, 37:307-310. DOI: <https://doi.org/10.1371/journal.pone.0000344>
- [128] Van Wagenberg, C. P. A., Delele, T. G., & Havelaar, A. H. (2022). Patient-related healthcare costs for diarrhoea, Guillain Barré syndrome and invasive non-typhoidal salmonellosis in Gondar, Ethiopia, 2020. *BMC Public Health*, 22(1), 2091. doi: 10.1186/s12889-022-14539-
- [129] Vandamme, P., Falsen, E., Pot, B., Kersters, K., De Ley, J. (1990). "Identification of *Campylobacter cinaedi* isolated from blood and feces of children and adult females." *J Clin Microbiol*. 28(5):1016-20. doi: 10.1128/JCM.28.5.1016-1020.
- [130] Wieszorek, A. E., Jervis, R. H., Wilson, E., & Scallan Walter, E. (2024). Improving occupational health surveillance for enteric infections. *Zoonoses and Public Health*, 71(4), 381-391. doi: 10.1111/zph.13111
- [131] Wieszorek K, Osek J. (2013). Antimicrobial resistance mechanisms among *Campylobacter*. *Biomed Res Int* 340605-340619. <https://doi.org/10.1155/2013/340605> 82 UK
- [132] White, RR (2023). Foodborne and waterborne illness. *Pediatric review*. 44(2), 81-91. doi: 10.1542/pir.2022-005621
- [133] Woźniak A. (2011). Fluoroquinolones resistance of *Campylobacter jejuni* and *Campylobacter coli* isolated from poultry in 1994–1996 and 2005–2008 in Poland, *Bulletin of the Veterinary Institute in Pulawy*. 55, no. 1, 15–20, 2-s2.0-79953052676.
- [134] Yamana, M., Kuwahara, M., Fukumoto, Y., Yoshikawa, K., Takada, K., & Kusunoki, S. (2019). Guillain-Barré syndrome and related diseases after influenza virus infection. *Neurol Neuroimmunol Neuroinflamm*, 6(4), e575. doi: 10.1212/NXI.0000000000000575

- [135] Yusuf, K., Sampath, V., & Umar, S. (2023). Bacterial Infections and Cancer: Exploring This Association And Its Implications for Cancer Patients. *International Journal of Molecular Sciences*, 24(4), 3110. <https://doi.org/10.3390/ijms24043110>
- [136] Zachariah, O. H., Lizzy, M. A., Rose, K., & Angela, M. M. (2021). Multiple drug resistance of *Campylobacter jejuni* and *Shigella* isolated from diarrhoeic children at Kapsabet County referral hospital, Kenya. *BMC Infectious Diseases*, 21(1), 109. doi: 10.1186/s12879-021-05788-3