

# THE IMPACT OF COVID-19 ON MYANMAR TOURISM

## Abstract

COVID-19 spread all over the world. Almost all the business sectors of the world are affected by this global pandemic. Tourism sector is not a single industry, but it is connected with many other industries directly or indirectly. Tourism sector is important for Myanmar because this sector contributes GDP for the country. This research paper points out the tourism sector of Myanmar and the impact of COVID-19 on tourism sector. In this paper, the difference between the number of international visitors and impacts on Myanmar Tourism sector are mentioned. This research paper gave the recommendations to rescue the tourism sector.

**Keywords:** Tourism, economy, COVID-19

## Author

**Nay Myo Htun**  
2nd Year, MA Economics  
Jain (Deemed-to-be University)  
Bengaluru, Karnataka, India  
naymyohtun197@gmail.com

## I. INTRODUCTION

Myanmar is known as the Golden Land for its glittering pagodas and other tourist destinations, situated in Southeast Asia. Myanmar is also the developing country and attempts to develop every sector and tourism is also one of the developing sectors in Myanmar. Myanmar also possess great tourist potential and attractions. Although the tourism sector has been developed by the military governments since 1992, the number of visitors to Myanmar was small compared to the neighbours. After the junta has transferred the power to the civilian government in 2011, the tourism sector gradually increased. Tourism sector has been promoted by advocacy groups as a method of providing economic benefit to Myanmar civilians and during the civilian government has been continuously promoting the tourism sector.

The novel coronavirus or COVID-19 occurred in December 2019 in Wuhan, People Republic of China. All the sectors throughout the world are affected by this COVID-19. People cancelled the trips, flights and hotel bookings and postponed the events. The travel restrictions of the international, regional and local immediately affected national economics, including tourism systems. The first case of COVID-19 in Myanmar occurred in Myanmar on March 23, 2020. The government imposed travel restrictions: international travel, domestic tourism and closing borders. And air transport, cruises, public transport, café, restaurants, conventions, festivals, meetings, culture and sport events are also prohibited to operate because of COVID-19. Although other sectors are trying to recover the damages or losses through online, the tourist destinations have to be still closed. So, it impacted on the tourism sector of Myanmar.

### 1. Research Questions

- How did Tourism sector impact on Myanmar economy?
- How did COVID-19 impact on Myanmar Tourism?
- How did COVID-19 impact on foreign tourists' arrival?

### 2. Objectives

The objectives of the paper are

- To analyze the impact of COVID-19 on Myanmar Tourism and
- To promote Myanmar tourism in new normal.

## II. LITERATURE REVIEW

The word “tour” came from Old French “*tor, tourn*” which is a turn, trick, round, from “*torner, tourner*” “to turn” and sense of “a continued ramble or excursion” is from 1640s. (Harper, n.d.)

The UNWTO defines *Tourism* is a social, cultural and economic phenomenon which entails the movement of people to countries or places outside their usual environment for personal or business/ professional purposes. These people are called visitors (which may be

either tourists or excursionists; residents or non-residents) and tourism has to do with their activities, some of which involve tourism expenditure. (UNWTO)

Tourism is one of the world's fastest growing industries and also the source of foreign exchange and employment when it closely linked to the social, economic, and environmental well-being of many countries, especially developing countries, like Myanmar. Tourism sector is one of the SDGs, Decent Work and Economic Growth according to United Nations, Department of Economic and Social Affairs. (United Nations, Department of Economic and Social Affairs)

In the work "The impact of COVID-19 on tourism sector in India" by Jaipuria (2021), the authors mentioned the three objectives which are predicting the number of foreign tourist arrivals, particularly in India using ANN model, analysing the impact of COVID-19 on tourism in terms of loss and gain in FEE, and suggesting the appropriate theoretical and managerial implications. The authors used Artificial Neural Network (ANN) model to predict the impact of the epidemic outbreak COVID-19 on India's foreign tourists' arrival and the loss of Foreign Exchange Earnings (FEE) considering the exchange rate and tourists' number. And monthly data of foreign tourists' arrival from different countries to India from 30th April 1989 to 31st March 2020 (369 months) are used in that paper. The data in that paper are obtained from the Centre for Monitoring Indian Economy and the monthly foreign exchange earnings from tourism are collected from January 1993 to March 2020. This study had significant theoretical and managerial implications. The total contribution of travel and tourism to India's GDP from 2018 is USD 247.37 billion, and 2019 is USD 268.29 billion. The predicted employment loss in the travel and tourism industry due to COVID19 in India is 9 million. In this study, the authors predicted the number of foreign tourists and its impact on the generated FEE. From the study, the major theoretical implication exhibited is that if the policies in the tourism sector are not restructured, then the FEE will fall below USD 1790.53 million and maybe entirely lost to the economy. If it is managed at some level, then the FEE value will be at least USD 13351.07 million. (Jaipuria, 2021)

Lee-Peng Foo (2021) in the study "The impact of COVID-19 on tourism industry in Malaysia" pointed out a brief overview of the COVID-19 pandemic and the impacts on Malaysia's tourism industry and the economic stimulus package. The authors used the secondary data from the government websites and WHO. This study pointed out the impact on airlines, hotel businesses. For the impact of hotel businesses, workers in the hotel industry in Kuala Lumpur have been the worst hit by the COVID-19. According to this study, from a sample size of 17,826 workers, 542 workers, equivalent to 3%, had been laid off and 3641 (20%) workers had been asked to take unpaid leave and 2880 (16%) workers had faced pay cuts. And this study also mentioned Malaysia's economic stimulus package which is expected to assist the tourism industry to sustain throughout this challenging period. (Lee-Peng Foo, 2021)

In the study "Tourism recovery strategy against COVID-19 pandemic", Shih-Shuo Yeh (2021) pointed out Disaster Management, Interdisciplinary Approaches and recent outbreak of pandemic. This paper uses a qualitative research method to examine the TCDM during the current crisis. Interviews were conducted and transcribed. The text-based data was analyzed by using SPSS modeler 14.1. The data in this paper are primary data and also secondary data. This paper mentioned the effect of COVID-19 on a wide range of tourism-

related businesses, some of them suffered the loss of customers which may cause unemployment. (Shih-Shuo Yeh, 2021)

There are types and many forms based on the purpose of visit in tourism. Types of tourism can be categorized into international and domestic tourism. When the people visit foreign countries, it can be called international tourism. Under international tourism, there are two types: inbound tourism and outbound tourism. If tourists of outside origin enter a particular country or travelling outside their host/ native country to another country, is called inbound tourism for the country where they visit. For example, a tourist of Indian origin travels to Myanmar; it is inbound tourism for Myanmar. When the tourists travel to a foreign country, it is the outbound tourism for his/her own country. And domestic tourism is the tourism activity of the people within their own country.

**1. Background of Myanmar:** There is a country in Southeast Asia known as the Golden Land called MYANMAR (formerly known as Burma). Myanmar is one of the last countries of Asia to be revealed to the travelling the world and the largest country in mainland Southeast Asia. It is located between the two powerful countries, China and India and also border with those countries and also with Bangladesh, Laos and Thailand. Myanmar has the total area of 677,000 square kilometers. The population of the country is estimated at 51.14 million according to 2019 Inter- Censual Survey Provisional Result.

On January 4, 1948, Myanmar got its independence. In 1962, there was a military coup by General Ne Win. Myanmar followed the Socialism but with Burmese Way to Socialism by 1974 Constitution. In 1988, the military formed State Law and Order Restoration Council led by General Saw Maung. The country's name was also changed from Burma to Myanmar in 1989. In 1992, the Chair of that council was succeeded by Senior General Than Shwe. He abolished that council and substituted with new council called State Peace and Development Council in the same year. According to 2008 constitution, the General Election was held in November, 2010 and Thein Sein Government assumed constitutional executive authority on March 30, 2011. In 2012 by-election, the National League for Democracy led by Aung San Suu Kyi who is the democracy icon in Myanmar won 43 out of 45 seats in the parliament. In 2015 general election, the NLD won the election and the NLD government took the office on April 1, 2016. The next term parliament election was held in 2020. In that election, the NLD also won a majority of seats in both legislative chambers but the military seized the power on February 1, 2021 before the new term parliament started. Many political leaders were detained including President Win Myint and Aung San Suu Kyi. And Vice Pres. Myint Swe became acting president. So, the people widely condemned the coup on the international stage, and also there was opposition to the military coup within Myanmar as citizens held large protests and engaged in acts of civil disobedience.

**2. Background of Myanmar Tourism:** The country has many colourful and exciting festivals nearly each month among them are, Thingyan Water Festival, Naga New Year and so on. For most international visitors, as the three main arrival points, there are the three International Airports of Yangon, Mandalay and Nay Pyi Taw. There are also internal flights with many domestic centers easily reached by air. Roads connecting the major centers are also good with the quality varies. There are also the rail system and services a large area of the country with the main routes being between Yangon and

Mandalay, Kalaw, Pyin Oo Lwin and Hispaw. Geographically, the country is divided into two large regions- Lower Myanmar (Coastal region) and Upper Myanmar (Interior Region). The interior plains and the delta region of the Ayeyarwaddy River are extremely fertile providing rich soil for the paddy fields, which play a huge role in the country's economy. The northwest and southwest coasts are dotted with islands and beautiful beaches. At higher elevations the weather is cooler, the central region has lesser rainfall and the rainy season lasts from the mid May to the mid October, but overall the visitors can visit all year round. Tourism sector is one of the promoted sectors of Myanmar Investment Commission (MIC).

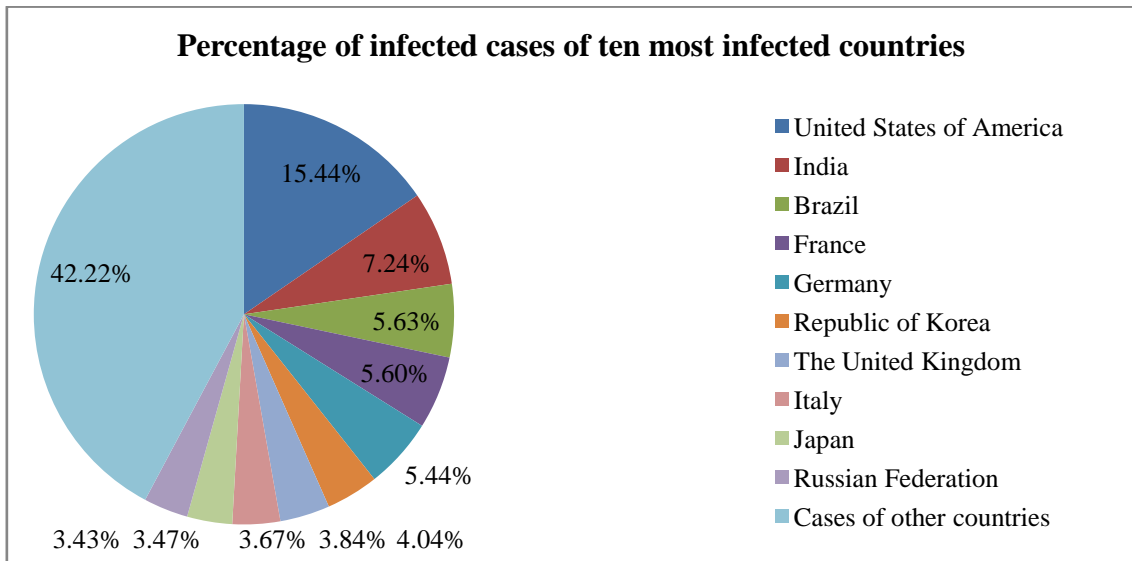
- 3. COVID-19 Situation in the World:** According to United Nations, Coronavirus disease (COVID-19) is an infection disease caused by the SARS-CoV-2 virus. Most people who virus infected will experience mild to moderate respiratory illness and recover without requiring special treatment, but some become seriously ill and require medical treatment. Anyone can be sick with COVID-19 and become seriously ill or die at any age. The COVID-19 was first identified from an outbreak in Wuhan City, Hubei Province of China in early December 2019. And it infected other countries in the world and also changed the virus version step by step. As of October 5, 2022, the total number of infected cases in the world is 616,427,419 and total death is 6,528,557. The ten most infected countries in the world are as shown in table 1.

**Table 1: Ten Most COVID-19 Infected Countries in the World**

Country	Total Cases	Total Deaths
United States of America	95,150,745	1,048,634
India	44,601,934	528,733
Brazil	34,684,529	686,371
France	34,533,358	151,695
Germany	33,519,761	150,192
Republic of Korea	24,882,894	28,544
The United Kingdom	23,672,855	190,317
Italy	22,602,840	177,257
Japan	21,385,662	45,083
Russian Federation	21,118,629	387,779

**Source:** World Health Organization (as of Oct 5, 2022)

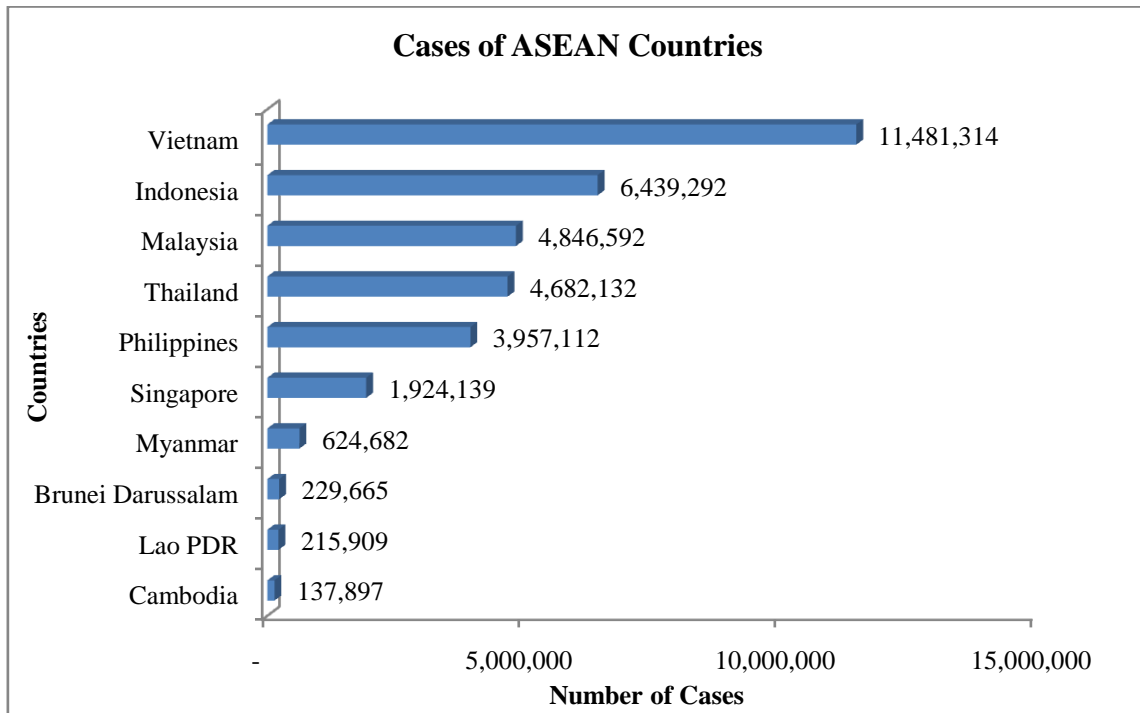
The percentages of the total cases of these countries among the global total cases are following below.



**Figure 1:** Percentage of Infected Cases of Top Most Infected Countries

**Source:** World Health Organization

The total cases in ASEAN are as shown in figure 2.



**Figure 2:** Cases of ASEAN Countries (as of Oct 5, 2022)

**Source:** World Health Organization

In this figure 2, among ten ASEAN countries, the infected cases in Vietnam are the highest, Indonesia is the second highest and Cambodia is the lowest.

### III.METHODOLOGY

The data used in this research paper is based on the secondary data. This study is followed by several articles, newspapers, websites and the data from the government ministries, UN World Tourism organization and World Health Organization. In this paper, to know the impact of COVID-19 on tourism sector of Myanmar, the data of the time period for three years (2019-2021) before COVID-19 and during COVID which is related with tourism sector of Myanmar is used.

### IV.DATA ANALYSIS

Myanmar is known as the Golden Land and also one of the best places to visit not only in ASEAN but also in Asia because of its attracted antiques, customs, traditions and also old Buddhist Pagodas. Myanmar tourism is very potential after the transition period of Myanmar in 2011. From that time, many tourists visited Myanmar. Unexpectedly, there was the COVID-19 pandemic on March 23, 2020. Tourist visa to Myanmar was suspended by the government of Myanmar since that time.

- 1. Restrictions by the Government of Myanmar during COVID-19:** Since the COVID-19 pandemic started in Wuhan of China, with a view of preventing importation and spread of COVID-19, the Government of the Republic of the Union of Myanmar is obliged to take additional precautionary measures to control and limit the risk that travellers from all countries may pose to the populations in Myanmar. The government formed the National-Level Central Committee for COVID-19 Prevention in 2020. When there was COVID-19 pandemic started in Myanmar on 23 March, 2020. Since at that time, Ministry of Foreign Affairs of Myanmar issued the announcement that the Myanmar Government temporarily suspends issuance of Visa on Arrival and e-visa for all countries. And the restriction was extended many times till 31 March 2022 as in table 2.

**Table 2: Dates for the Temporary Visa Suspension**

No.	Issuing Date	Starting Date for effective	Until Date for effective
1	24-Mar-20	25-Mar-20	25-Apr-20
2	25-Apr-20	26-Apr-20	15-May-20
3	15-May-20	16-May-20	31-May-20
4	1-Jun-20	1-Jun-20	15-Jun-20
5	15-Jun-20	16-Jun-20	30-Jun-20
6	28-Jun-20	1-Jul-20	31-Jul-20
7	3-Jul-20	1-Aug-20	15-Aug-20
8	28-Jul-20	16-Aug-20	31-Aug-20
9	29-Aug-20	1-Sep-20	30-Sep-20
10	28-Sep-20	1-Oct-20	31-Oct-20

11	27-Oct-20	1-Nov-20	30-Nov-20
12	29-Nov-20	1-Dec-20	15-Dec-20
13	15-Dec-20	16-Dec-20	31-Dec-20
14	30-Dec-20	1-Jan-21	31-Jan-21
15	30-Jan-21	1-Feb-21	28-Feb-21
16	26-Feb-21	1-Mar-21	31-Mar-21
17	31-Mar-21	1-Apr-21	30-Apr-21
18	30-Apr-21	1-May-21	31-May-21
19	31-May-21	1-Jun-21	30-Jun-21
20	30-Jun-21	1-Jul-21	31-Jul-21
21	30-Jul-21	1-Aug-21	31-Aug-21
22	31-Aug-21	1-Sep-21	30-Sep-21
23	1-Oct-21	1-Oct-21	31-Oct-21
24	1-Nov-21	1-Nov-21	30-Nov-21
25	30-Nov-21	1-Dec-21	31-Dec-21
26	1-Jan-22	1-Jan-21	31-Jan-22
27	31-Jan-22	1-Feb-22	28-Feb-22
28	1-Mar-22	1-Mar-22	31-Mar-22

**Source:** Ministry of Foreign Affairs of Myanmar

According to table 2, the Myanmar government imposed restriction on visa to Myanmar since there was COVID-19 in Myanmar. Due to the visa restrictions, no visitors came and it started impacting the tourism sector of Myanmar. Although there was military coup in Myanmar on February 1, 2021, the military regime so-called State Administrative Council (SAC) by themselves continued extension the restriction till 31 March, 2022. After April 1, 2022, visas were reissued again.

- 2. Tourist situation in Myanmar (2019-2021):** Due to COVID-19 situation and the restrictions by the governments of the world, there was a huge impact on tourism sector of the countries. Myanmar is also one of the countries which faced the impact of COVID-19 on tourism sector. Before the impacts of COVID-19 are discussed, the tourism situation in Myanmar needed to know. We can see the total number of international visitor arrivals to Myanmar by Entry Points (2019-2021) in table 3.

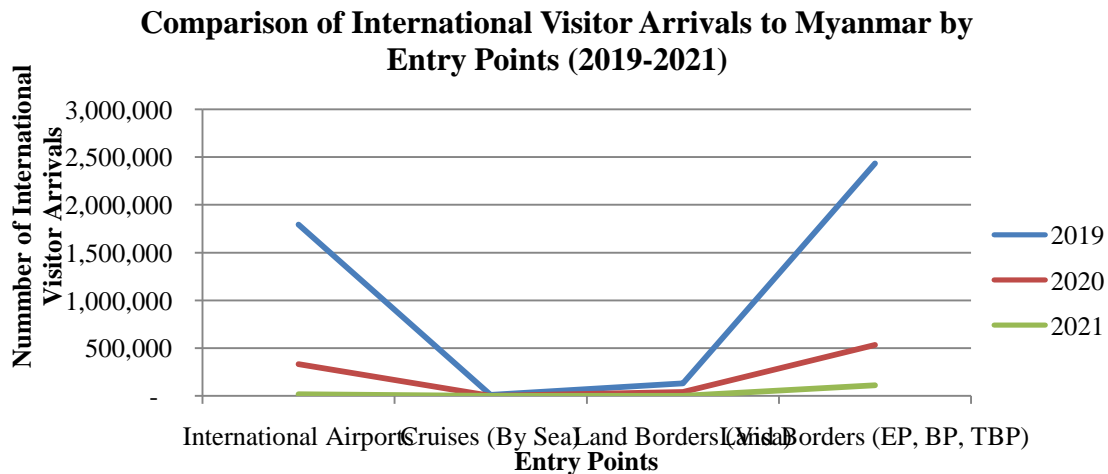


**Table 3: International Visitor Arrivals to Myanmar by Entry Points (2019-2021)**

Entry Points/Year	2019	2020	2021
<b>International Airports</b>	1,792,353	330,373	18,558
<b>Cruises (By Sea)</b>	8,701	1,113	818
<b>Land Borders (Visa)</b>	129,371	40,415	-
<b>Land Borders (EP, BP, TBP)</b>	2,433,676	531,442	111,571
<b>Total</b>	4,364,101	903,343	130,947
<b>Percentage (+) Increase, (-) Decrease</b>	(+)23%	(-)79%	(-)86%

**Source:** Department of Immigration

According to table 3, the number of international visitors from the International Airports in 2019 is the highest and in 2021 is the lowest among three years, from the cruises in 2019 is the highest and in 2021 is the lowest, from Land Borders (Visa) in 2019 is the highest and in 2021 is the lowest (not issuing no visa) and from Land Borders (EP, BP, TBP) in 2019 is the highest and in 2021 is the lowest. We can see the comparison of International Visitor Arrivals to Myanmar by Entry Points (2019-2021) in figure 3.



**Figure 3:** Comparison of International Visitor Arrivals to Myanmar by Entry Points (2019-2021)

**Source:** Myanmar Tourism Statistics 2019, 2020 and 2021

We can see the visa type before COVID-19 in 2019, during COVID-19 in 2020 and till 2021 in table 4.

**Table 4: Types of Visa (2019-2021)**

Types of Visa/ Year	2019	2020	2021
Tourist	1,078,011	185,202	-
Business	281,879	74,285	12,533
Others	3,004,211	643,856	118,414
Total	4,364,101	903,343	130,947

**Source:** Myanmar Tourism Statistics 2019, 2020 and 2021



**Figure 4:** Type of Visa in 2019

**Source:** Myanmar Tourism Statistics 2019



**Figure 5:** Type of Visa in 2020

**Source:** Myanmar Tourism Statistics 2020

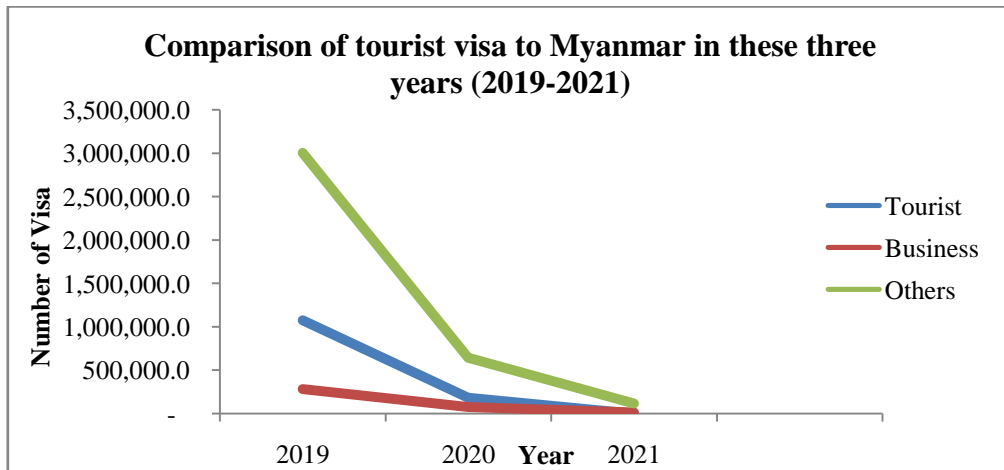


**Figure 6:** Type of Visa in 2021

**Source:** Myanmar Tourism Statistics 2021

According to the figure 4, the number of other visas is the highest (68.84%), tourist visa is the second highest with 24.70% and the business visa is the lowest with 6.46%. Like figure 4 for types of visa in 2019, figure 5 points out the number of other

visa is the highest (71.3%), the tourist visa is the second highest with 20.5% and the business visa is the lowest with 8.2%. Figure 6 shows that the number of other visa is also the highest with 90.43%, the business visa is the second highest with 9.57% and the tourist visa is the lowest with 0% in 2021. We can see the comparison of tourist visa to Myanmar in these three years (2019-2021) in figure 7.



**Figure 7:** Comparison of Tourist Visa to Myanmar in These Three Years (2019-2021)

**Source:** Myanmar Tourism Statistics 2019, 2020 and 2021

According to figure 7, the number of all visas is gradually decreasing, especially for tourist visa with no issued visa in 2021. For the tourist visa, the number of the visa in 2020 decreased nearly 80% compared to 2019 and also decreased 100% in 2021 compared to 2020. Among the visa, we can see the number of visitor arrivals by Nationality (2019 - 2021) as shown in table 5.

**Table 5: Number of Visitor Arrivals by Nationality (2019 - 2021)**

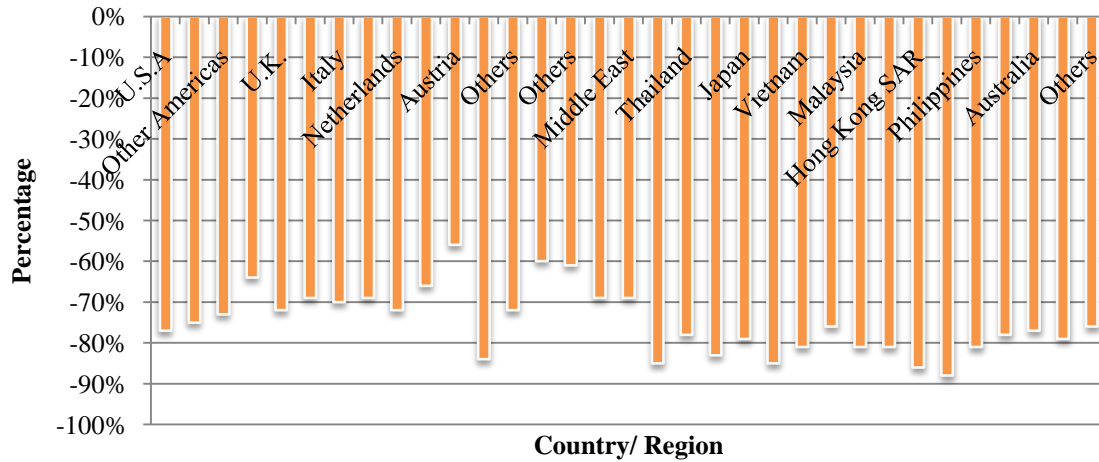
No.	Country/Region	2019	2020	2021
North America (Total)		77,817	17,765	691
1	U.S.A	66,757	15,030	614
2	Canada	11,060	2,735	77
Other Americas (Total)		10,227	2,721	68
West Europe (Total)		184,016	55,767	1,248
1	France	42,608	15,520	360
2	U.K.	33,857	9,317	300
3	Germany	29,447	9,052	83
4	Italy	19,121	5,794	77
5	Switzerland	9,287	2,877	93
6	Netherlands	9,600	2,648	77

7	Belgium	5,733	1,972	20
8	Austria	3,729	1,658	17
9	Spain	13,689	2,182	52
10	Others	16,965	4,747	169
East Europe (Total)		18,649	7,267	873
1	Russia	5,259	2,094	594
2	Others	13,390	5,173	279
Africa (Total)		4,490	1,384	192
Middle East (Total)		6,006	1,890	152
Asia (Total)		1,599,186	278,293	15,910
1	China	749,719	110,468	8,241
2	Thailand	273,157	58,931	1,150
3	Korea	111,794	19,363	1,080
4	Japan	125,706	26,100	1,171
5	Singapore	57,890	8,762	217
6	Vietnam	52,567	9,825	182
7	India	48,400	11,514	1,454
8	Malaysia	44,203	8,497	981
9	Taiwan	39,374	7,306	186
10	Hong Kong SAR	32,005	4,393	42
11	Macau SAR	3,352	388	2
12	Philippines	17,398	3,311	233
13	Others	43,621	9,435	971
Oceania (Total)		30,034	6,814	242
1	Australia	25,867	5,952	195
2	New Zealand	4,000	822	35
3	Others	167	40	12
Total		1,930,445	371,901	19,376

**Source:** Myanmar Tourism Statistics 2019, 2020 and 2021

Figure 8 and 9 show that the difference of the number of visitor arrivals between 2019 & 2020, and 2020 & 2021.

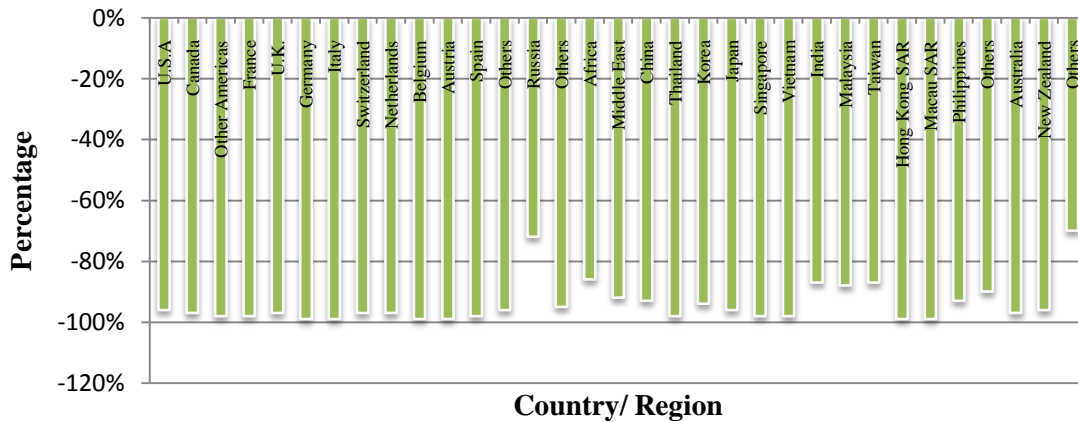
**Difference in Percentage of Visitor Arrivals to Myanmar (2019 & 2020)**



**Figure 8:** Difference of the Number of Visitor Arrivals between 2019 & 2020

**Source:** Myanmar Tourism Statistics 2019, 2020 and 2021

**Difference in Percentage of Visitor Arrivals to Myanmar (2020 & 2021)**



**Figure 9:** Difference of the Number of Visitor Arrivals between 2020 & 2021

**Source:** Myanmar Tourism Statistics 2019, 2020 and 2021

According to figure 8, the difference of the number of visitor arrivals from Austria is the lowest with -56% and from Russia is the second lowest with -60% and from Others of East Europe is the third lowest with -61% whilst from Macau SAR is the highest with 88%, from Hong Kong SAR is the second highest with -86% and from China and Singapore are the third highest with -85%. According to figure 9, the difference of the number of visitor arrivals from Others of Oceania is the lowest with -70% and from Russia is the second lowest with -72% and from Africa is the third lowest with -86%

whilst from Germany, Italy, Belgium, Austria, Hong Kong SAR and Macau SAR are the highest with -99%.

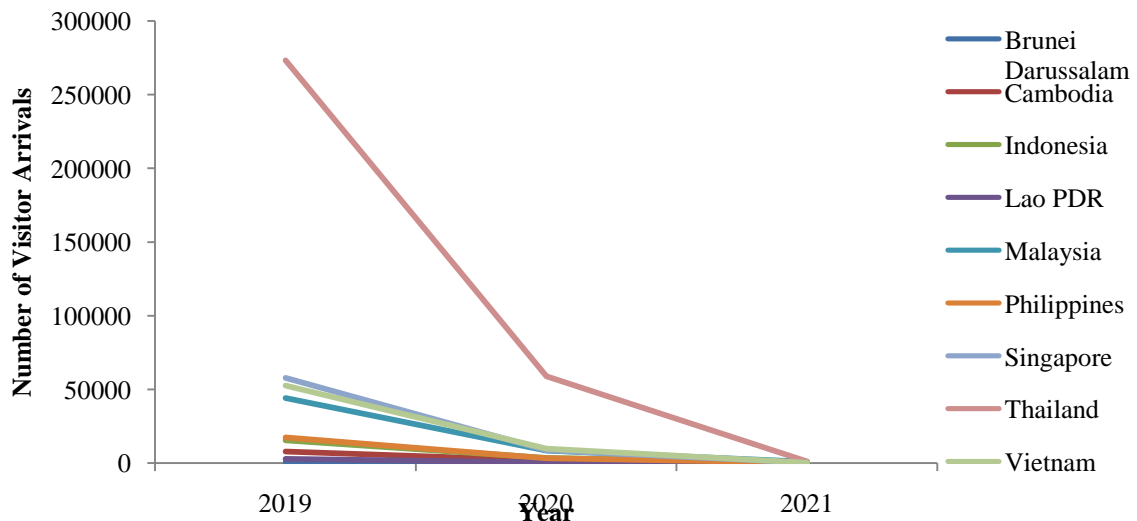
We can also see the number of visitor arrivals from ASEAN countries (2019-2021) as shown in table 6.

**Table 6: Number of Visitor Arrivals from ASEAN countries**

Country/ Year	2019	2020	2021
Brunei Darussalam	454	77	13
Cambodia	7,879	1,802	26
Indonesia	15,558	3,653	486
Lao PDR	2,783	505	6
Malaysia	44,203	8,497	981
Philippines	17,398	3,311	233
Singapore	57,890	8,762	217
Thailand	273,157	58,931	1,150
Vietnam	52,567	9,825	182
Total	471,889	95,363	3,294

**Source:** Myanmar Tourism Statistics 2019, 2020 and 2021

**Number of Visitor Arrivals from ASEAN Countries during three years (2019-2021)**



**Figure 10:** Number of Visitor Arrivals from ASEAN Countries (2019-2021)

**Source:** Myanmar Tourism Statistics 2019, 2020 and 2021

According to figure 10, in 2019, the number of visitor arrivals from Thailand is the highest and from Brunei Darussalam is the lowest. In 2020, the number of visitor arrivals from Thailand is also the highest and from Brunei Darussalam is the lowest and in 2021, from Thailand is also the highest and from Lao PDR is the lowest. During these three years (2019-2021), the visitor arrivals from ASEAN countries are decreasing year by year because of COVID-19 and in 2021, the numbers of the visitor arrivals are the lowest. Let's see the Visitor Arrivals, Expenditure, and Length of Stay (2019-2021) in table 7.

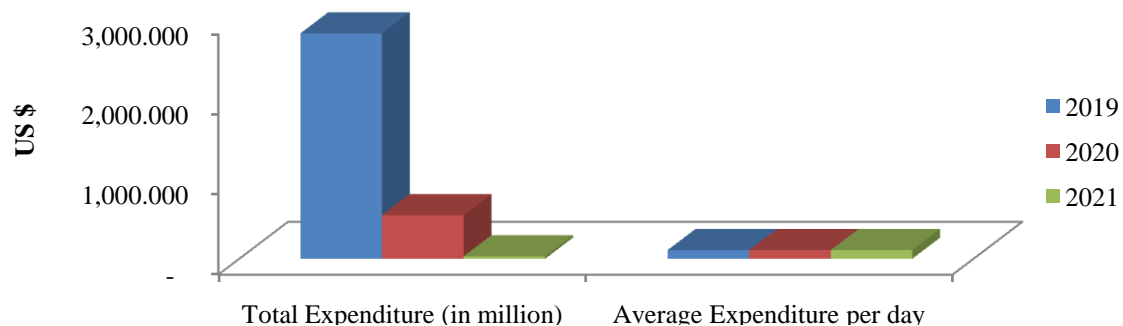
**Table 7: Visitor Arrivals, Expenditure, and Length of Stay (2019-2021)**

Year	2019	2020	2021
Tourist Arrivals	4,364,101	903,343	130,947
Total Expenditure (US\$ in million)	2,818.753	544.613	30.231
Average Expenditure per day (US\$)	108	108	108
Average Length of Stay (Night)	6	6	6

**Source:** Ministry of Hotels and Tourism & Department of Immigration

**Note:** Total Expenditures of 2020 and 2021 are expressed based on the 2019 survey data

**Comparison of Total Expenditure and Average Expenditure per day of three years (2019-2021)**



**Figure 11:** Comparison of Total Expenditure and Average Expenditure per Day of Three Years

**Source:** Myanmar Tourism Statistics 2019, 2020 and 2021

In figure 11, it shows that before COVID-19 in 2019, the total expenditure is the highest with US\$ 2818.753 million among three years (2019-2021). Due to COVID-19 pandemic and also the government restriction for temporarily visa suspension, no tourists came during COVID-19 crisis in Myanmar from 2020-2021. So, the total expenditure in 2021 is the lowest with US\$ 30.231 million. Although the total expenditure by visitor was being decreased, the average expenditure per day is the same in these three years (2019-2021) with US\$ 108 each year. After knowing the tourism sector in Myanmar, the impacts of COVID-19 on tourism sector will be discussed next section.

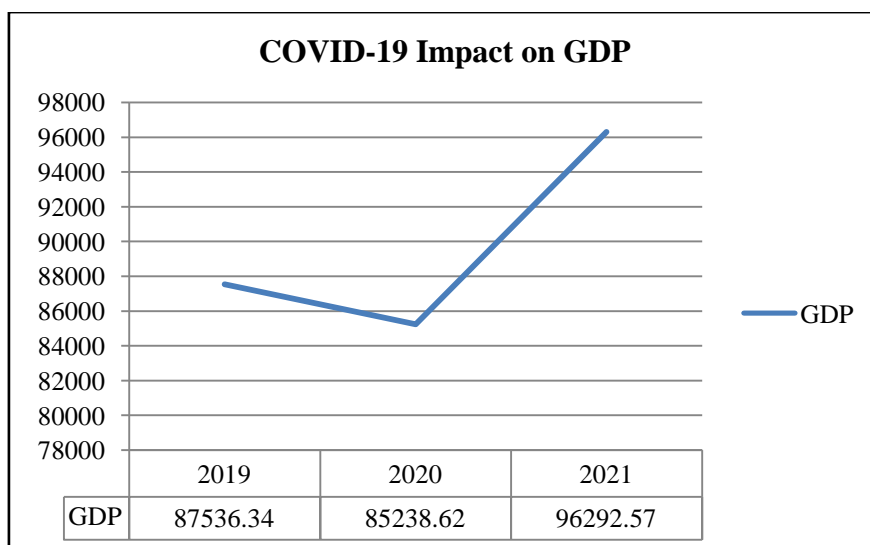
**3. Impacts of COVID-19 on Tourism Sector:** Due to COVID-19, there are many impacts on tourism sector in any country which gets the revenue from tourism sector. The impacts can generally be divided into three types:

- Economic impact
- Social impact
- Environmental impact

<b>Impacts of COVID-19 on Tourism sector</b>	Economic	GDP
		Income
		Foreign Exchange Earnings
		Employment
		BoP
	Social	Cultural
		Social influence on community
	Environment	Positive impact
		Negative impact

• **Economic Impact**

➤ **GDP:** The GDP of the countries in the world fall down because of the COVID-19. We can compare the World’s GDP before COVID-19 and during COVID-19 as in figure 12.



**Figure 12: COVID-19 Impact on World’s GDP**  
**Source: World Bank**



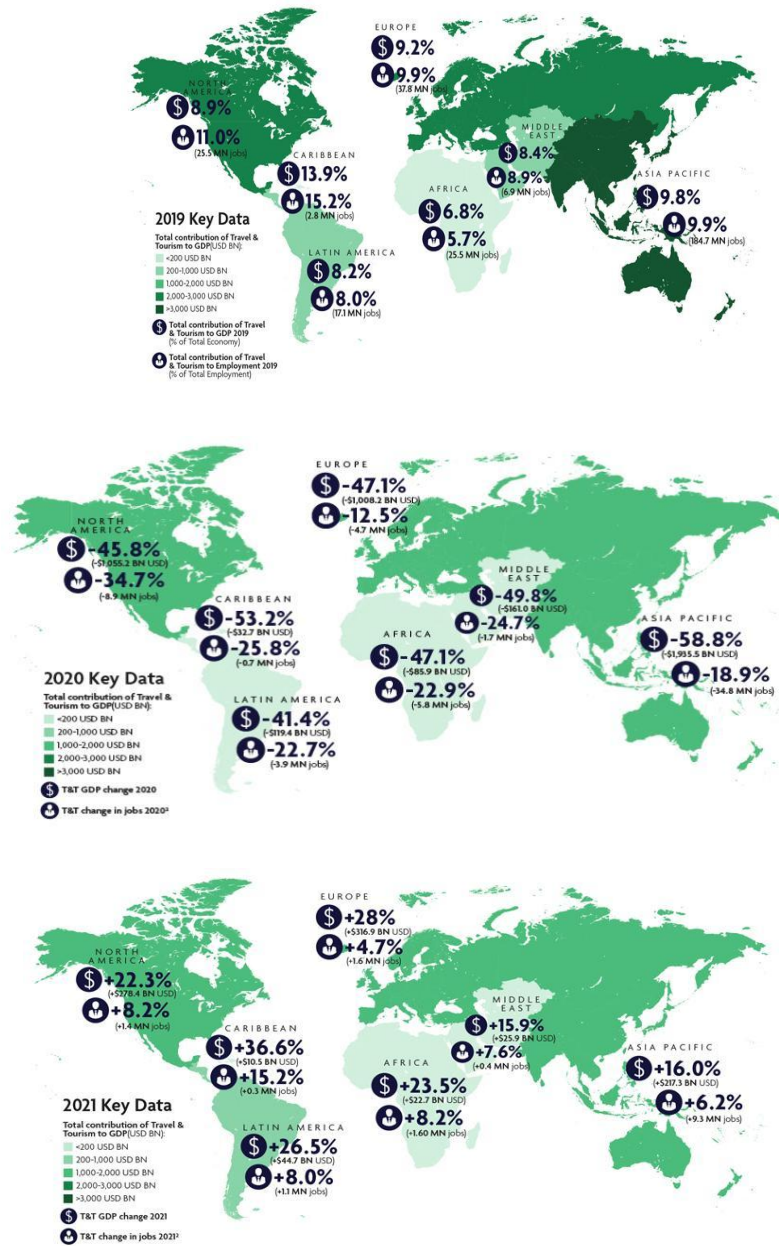
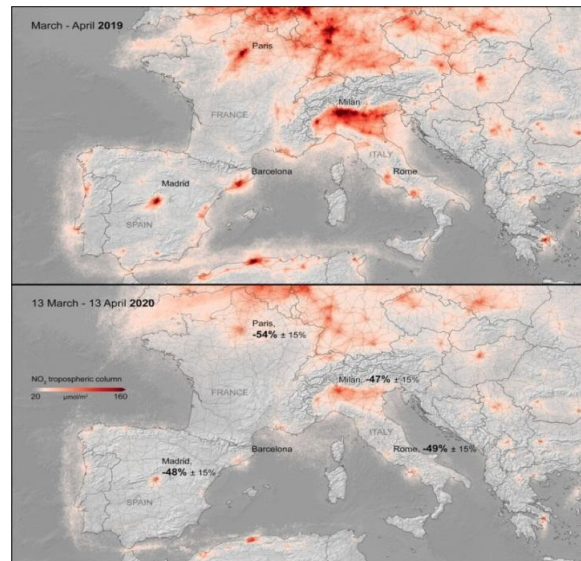


Figure 13: Total Contributions of Travel & Tourism to GDP (2019-2021)

Source: WTTC

- **Employment:** The World Travel and Tourism Council (WTTC) forecast that up to 75 million jobs are at risk in this sector. In fact, a far higher share of low-skilled immigrants, women and students are employed in tourism compared to the total non-financial business economy. (Paola Maniga, 2020)

- **Environment**

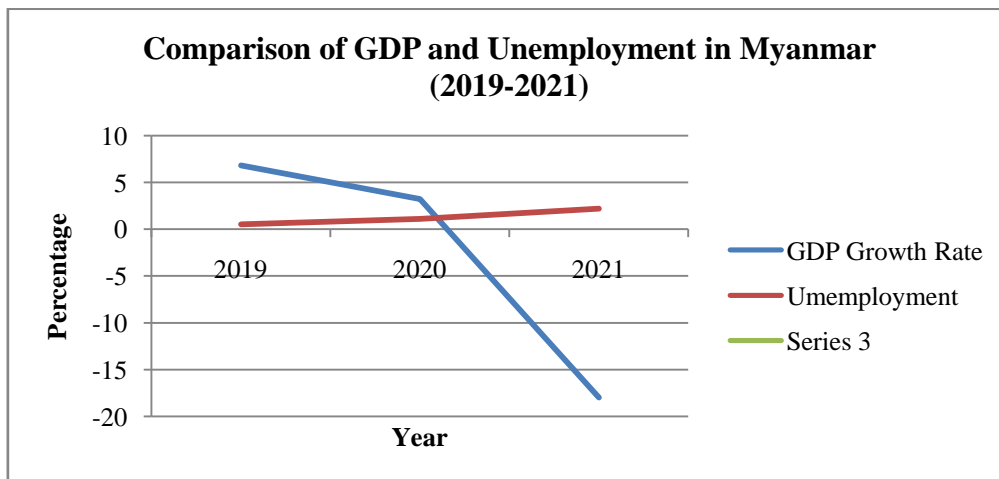


**Figure 14:** Comparison of the NO<sub>2</sub> concentration between 2019 and 2020

**Source:** European Space Agency (ESA), 2020

According to the figure 14, we can see the NO<sub>2</sub> concentration decreased in 2020 because people stayed at home.

#### 4. Impacts of COVID-19 on Tourism Sector in Myanmar



**Figure 15:** GDP and Unemployment in Myanmar (2019-2021)

**Source:** World Bank

According to the figure 15, the GDP and Unemployment rate in Myanmar is the lowest during 2020, the COVID-19 period. According to Socio-economic welfare policies. Myanmar developed the COVID-19 Economic Relief Plan in April 2020 to

mitigate the economic impact of COVID-19. Through the plan, the Myanmar government has established a COVID-19 fund to provide loans to small and medium enterprises, provided cash and one-time food assistance to certain vulnerable groups, and implemented a range of other measures for economic recovery.

## V. FINDINGS

According to the data analysis, International Visitor Arrivals to Myanmar by Entry Points during three years (2019-2021), in 2020 is the lowest because of COVID-19. Myanmar government also restricted the visa in 2020 so the number of visa issued by Myanmar government is the lowest in 2020. The difference in percentage of International visitor arrival between these three years has gradually decreased. For the visitors from ASEAN, the number of the visitors decreased and the visitors from Lao PDR was the lowest. There are many impacts on Myanmar Tourism, especially unemployment rate in tourism sector and foreign reserve from tourism and even impact on the GDP. There was a limitation of data so the other researchers can continue with this paper.

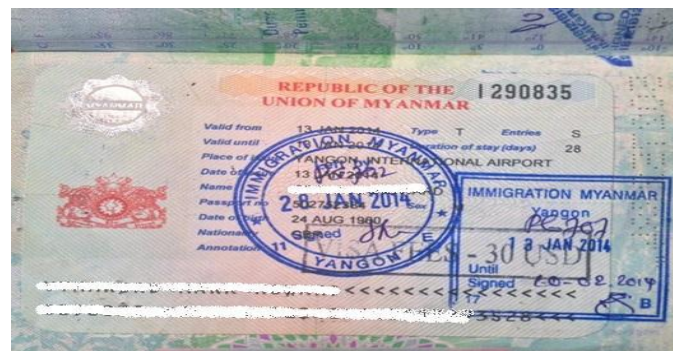
## VI. RECOMMENDATIONS

As the recommendations, the government cannot restrict the visa for so long. So, the government should allow the borders and also commercial flights. In inbound tourism, the government should open the few tourist spots not only for the local people but also for the international visitors. And also should educate to follow the health precautions and social distancing. To develop the tourism, should promote offers and discounts. If another pandemic will be become, the government should plan for the relief plan for every sector.

## VII. CONCLUSION

Tourism has always been an integral part of any economy, and no crisis demonstrated this better than COVID-19. Myanmar government increasingly realised that Tourism must be given a seat at the table to ensure a full and swift recovery. Indeed, governments have witnessed how tourism affects more than just jobs in the sector; it affects people's livelihoods, community development, the environment, wildlife, and the overall economy. So, the government made many plans for many sectors, tourism sector is one of them. In new normal, the government should promote tourism sector more than before.

## APPENDIX



Appendix 1: Myanmar Tourist Visa Sample

**Additional Precautionary Restrictions for travellers visiting Myanmar  
to Prevent Spread of COVID-19**

1. With a view to preventing importation and spread of COVID-19, the Government of the Republic of the Union of Myanmar is obliged to take additional precautionary measures to control and limit the risk that travellers from countries with very high numbers of cases may pose to the populations in Myanmar.

2. The following additional temporary restrictive measures will take effect starting from **21 March 2020, 0000 hours** at the port of departure:-

2.1. Temporary restrictive measures on additional countries with very high numbers of cases

All incoming travellers including Myanmar nationals arriving from or having visited **USA, Switzerland, UK, the Netherlands, Austria, Belgium, Norway, Sweden and Denmark** in the past 14 days shall be subject to 14-day **facility quarantine** on their arrival in Myanmar. As for diplomats accredited to Myanmar and **resident** United Nations officials, they will be encouraged to take **home quarantine** for 14 days on their arrival in Myanmar. All are required to present Medical Certificate issued by a medical facility recognized by the health authorities of the respective states, of having no symptoms of acute respiratory illness (fever and cough or shortness of breath ), before boarding any airline destined to Myanmar.

2.2. Temporary Suspension of Visa on Arrival and e-visa

The Myanmar Government temporarily suspends issuance of Visa on Arrival (VOA) and e-visa **for all countries** until 30 April 2020.

3. However, diplomats accredited to Myanmar, the resident UN officials and any foreign national who intends to travel to Myanmar on compelling reason or on

important official mission may contact nearest Myanmar Missions for necessary entry visa or for ease of the quarantine procedure.

4. The earlier precautionary measures issued on 15 March 2020 shall also remain in force until further notice. The updated list of additional quarantine measures for international travellers and Myanmar citizens is attached herewith.

Ministry of Foreign Affairs

Nay Pyi Taw

Dated : 20 March 2020

**Appendix 2: The announcement for Additional Precautionary Restrictions for COVID-19**

**Additional Precautionary Restrictions for travellers from all countries visiting  
Myanmar**

1. With a view to preventing importation and spread of COVID-19, the Government of the Republic of the Union of Myanmar is obliged to take additional precautionary measures to control and limit the risk that travellers from all countries may pose to the populations in Myanmar.
2. The following additional temporary restrictive measures will take effect for incoming travellers from all countries starting from **25 March 2020, 0000 hours** (Myanmar standard time) –
  - 2.1. All incoming Myanmar nationals from any country will be subject to a 14-day **facility quarantine** on their arrival in Myanmar.
  - 2.2. All foreign nationals travelling to Myanmar are required to present laboratory evidence of absence of COVID-19 infection issued no more than 72 hours prior to the date of travel before boarding any airline destined for Myanmar. They will be subject to a 14-day **facility quarantine** on their arrival in Myanmar.
  - 2.3. All diplomats accredited to Myanmar and United Nations officials working in Myanmar are also required to present laboratory evidence of absence of COVID-19 infection issued no more than 72 hours prior to the date of travel before boarding any airline destined for Myanmar. They will be subject to **home quarantine** for 14 days on their arrival in Myanmar
3. This notification shall supersede the precautionary measures announced earlier.

Ministry of Foreign Affairs  
Nay Pyi Taw  
Dated. 24 March 2020

**Appendix 3: The announcement for Additional Precautionary Restrictions for COVID-19**

**REFERENCES**

- [1] COVID-19 tourism relief plan. Retrieved from <https://tourism.gov.mm/wp-content/uploads/2020/06/COVID-19-Tourism-Relief-Plan.pdf>
- [2] Department of Economic and Social Affairs of United Nations. *Sustainable tourism*. Retrieved from <https://sdgs.un.org/topics/sustainable-tourism>
- [3] Department of Immigration, Ministry of Immigration and Population of Myanmar
- [4] Harper, D. (n.d.). Etymology of tourism. Online Etymology Dictionary. Retrieved from <https://www.etymonline.com/word/tourism>
- [5] Htun, N. M. & Habeeb, M. (2022). *Public Budgeting in Myanmar During Five Years (2016-2021)*. JNANA CHILUME-2022 (5<sup>th</sup> Annual Series National Conference), 21-42.
- [6] Lee-Peng Foo, Mui-Yin Chin, Kim-Leng Tan & Kit-Teng Phuah (2021) The impact of COVID-19 on tourism industry in Malaysia, *Current Issues in Tourism*, 24:19, 2735-2739, DOI: 10.1080/13683500.2020.1777951
- [7] Ministry of Immigration and Population of Myanmar Website. Retrieved from <https://www.mip.gov.mm>

- [8] Ministry of Foreign Affairs of Myanmar Official Facebook Page. Retrieved from <https://www.facebook.com/mofamyanmar>
- [9] Ministry of Foreign Affairs of Myanmar Website. Retrieved from <https://www.mofa.gov.mm>
- [10] Ministry of Hotel and Tourism of Myanmar Website. Retrieved from <https://tourism.gov.mm/>
- [11] Ministry of Hotel and Tourism of Myanmar Website. *About Myanmar*. Retrieved from <https://tourism.gov.mm/about-myanmar/>
- [12] Ministry of Hotel and Tourism of Myanmar Website. *Policies of Ministry of Hotel and Tourism*. Retrieved from <https://tourism.gov.mm/policies/>
- [13] Myanmar Policy Response to COVID-19. Retrieved from [https://centerforpolicyimpact.org/wp-content/uploads/sites/18/2020/10/Myanmar-National-Response-to-COVID\\_19.pdf](https://centerforpolicyimpact.org/wp-content/uploads/sites/18/2020/10/Myanmar-National-Response-to-COVID_19.pdf)
- [14] Myanmar Tourism Statistics 2019. Retrieved from <https://tourism.gov.mm/wp-content/uploads/2020/05/Myanmar-Tourism-Statistics-2019-1.pdf>
- [15] Myanmar Tourism Statistics 2020. Retrieved from <https://drive.google.com/file/d/1j8hdoATIGpu7S7pcJtmF52lft-cINCjJ/view>
- [16] Myanmar Tourism Statistics 2021. Retrieved from <https://tourism.gov.mm/wp-content/uploads/2022/06/Myanmar-Tourism-Flyer-2022-01-Final-converted.pdf>
- [17] Myanmar Tourism Strategic Recovery Roadmap 2021-2025. Retrieved from <https://chintravel.com.mm/wp-content/uploads/2020/12/MYANMAR%20TOURISM%20STRATEGIC%20RECOVERY%20ROADMAP%2023.10.20.pdf>
- [18] MYANMAR TOURISM STRATEGIC RECOVERY ROADMAP 2021\_2025 Detailed analysis and action plan. Retrieved from <https://tourism.gov.mm/wp-content/uploads/2022/06/MYANMAR-TOURISM-STRATEGIC-RECOVERY-ROADMAP-23.10.20-4.pdf>
- [19] Sanjita Jaipuria, Ratri Parida & Pritee Ray (2021) The impact of COVID-19 on tourism sector in India, *Tourism Recreation Research*, 46:2, 245-260, DOI: 10.1080/02508281.2020.1846971. Retrieved from <https://doi.org/10.1080/02508281.2020.1846971>
- [20] Shih-Shuo Yeh (2021) Tourism recovery strategy against COVID-19 pandemic, *Tourism Recreation Research*, 46:2, 188-194, DOI: 10.1080/02508281.2020.1805933
- [21] Sultana, S., Islam, T. & Islam, M. (2020). Impact of Covid-19 Pandemic on Top Tourist Destinations in the World. *Journal of Tourism, Hospitality and Sports*. 50, 2020. 41-50.
- [22] Tourism notes. *Tourism*. Retrieved from <https://tourismnotes.com/travel-tourism/>
- [23] UNWTO Website. *Glossary of Tourism Terms*. Retrieved from <https://www.unwto.org/glossary-tourism-terms>
- [24] World Health Organization Website. Retrieved from <https://www.who.int/>
- [25] World Health Organization. *Coronavirus Disease (COVID-19)*. Retrieved from [https://www.who.int/health-topics/coronavirus#tab=tab\\_1](https://www.who.int/health-topics/coronavirus#tab=tab_1)
- [26] World Travel and Tourism Council. *Economic Impact Reports*. Retrieved from <https://wtcc.org/research/economic-impact>
- [27] Photo of Myanmar Visa Sample. Retrieved from <https://allpointseast.com/blog/tour-info/burma-myanmar/burma-myanmar-visas/>