

**IMPACT ASSESSMENT OVER THE BURNED  
AREAS OF AUSTRALIAN BUSHFIRE 2019 – 2020  
USING NDVI METHOD WITH ARC GIS IN THE  
SHIRE OF EAST GIPPSLAND, VICTORIA–  
REGION OF AUSTRALIA**

<sup>1</sup>Riazsheriff,<sup>1</sup> D.Manimaran, <sup>1</sup>S,Muthusamy, <sup>2</sup>John Prince Soundranayagam and  
<sup>3</sup>P Mohana

<sup>1</sup>Department of Geology, V.O.Chidambaram College, Thoothukudi- 628008, Tamilnadu, India.

<sup>2</sup>Department of Physics, V.O.Chidambaram College, Thoothukudi-628008, Tamilnadu, India.

<sup>3</sup>Centre for Remote Sensing and Geoinformatics, Sathyabama Institute of Science and Technology,  
Chennai, India

[Email:georiaz17@gmail.com](mailto:georiaz17@gmail.com)

**ABSTRACT:**

This Research study was taken to quantify the amount of forest burned during the bushfire in Shire of east Gippsland. The study is based on images from before and after the event. For data visualization of the study, Landsat 8 Multispectral imageries have been used from USGS Earth Explorer. NDVI method has been used to analyze the data of both before fire dated on 8<sup>th</sup> October of 2019 and after fire dated on 28<sup>th</sup> June 2020. As Graphical representation is used to elaborate the effect took place during the event. Arc GIS10.8 software has been used to analyse the data. The result signifies that large amount of the forest has been destroyed during the event, making this as one of the worst disasters happened in recent years.

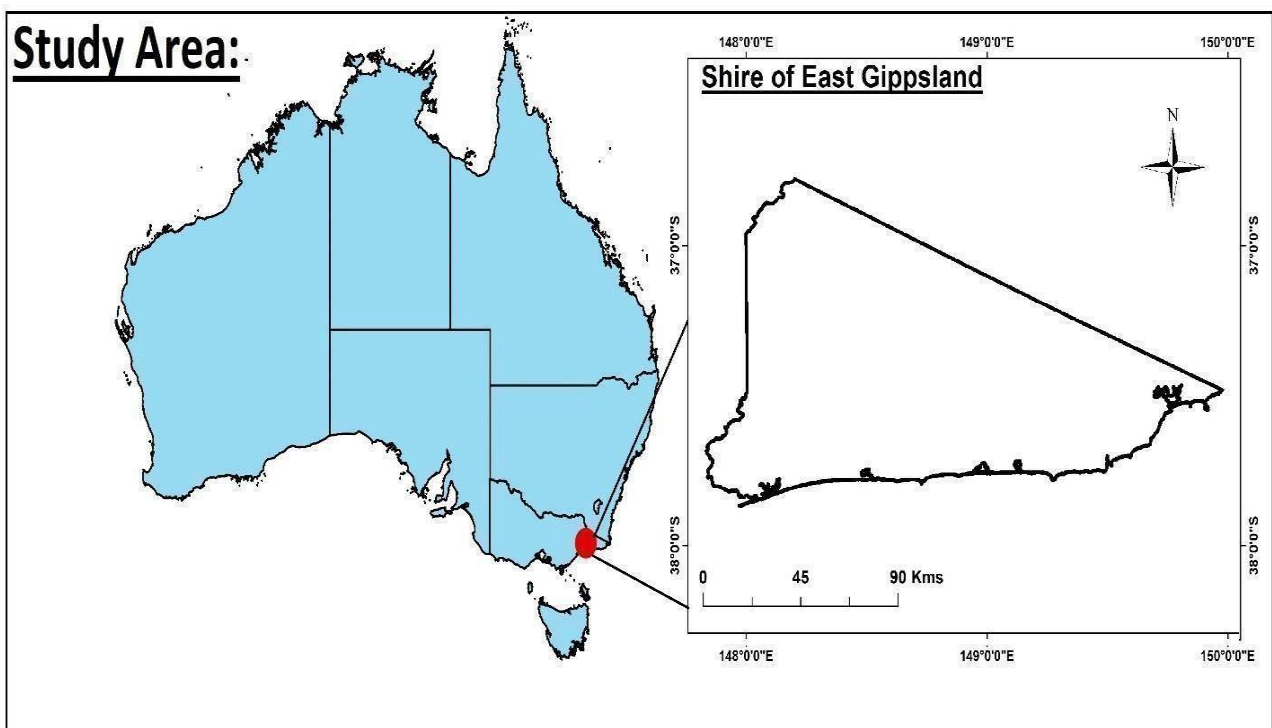
**Keywords:** Bushfire, ArcGIS, Multispectral Images, NDVI

## **INTRODUCTION:**

Bushfires are one of the most destructive forces of nature, bushfires can burn using grass, scrub or forest or a combination of these for fuel. Unless quickly controlled, bush fires can become large, spreading to affect forests, wildlife, agriculture and other buildings, and human life. These bushfires are very much common during the summer seasons of Australia due to its hot and dry climate. Some parts of Australia are very much prone to these fires especially the southern eastern parts of Australia. On 21 November 2019, lightning strikes ignited a series of fires in East Gippsland, initially endangering the communities of Buchan, Buchan South and Sunny Point. On 30 December 2019, there were three active fires in East Gippsland with a combined area of more than 130,000 hectares 320,000 acres. On 20<sup>th</sup> February 2020, the huge East Gippsland bushfire that had burned for three months was declared contained.

## **STUDY AREA:**

The study area is located in the southern eastern part of Australia and lies on the latitude and longitude of  $37.4976^{\circ}$  S and  $148.1893^{\circ}$  E respectively. The Shire of East Gippsland is a local government area in the state of Victoria and roughly covers an area around 20,940 square kilometers. It has an elevation of about 150m from the Mean Sea Level (MSL). The climate in East Gippsland is temperate, with patterns of precipitation and temperature influenced by geography, topography, altitude and proximity to the coast.



**Fig1. Map showing the study area of Shire of East Gippsland**

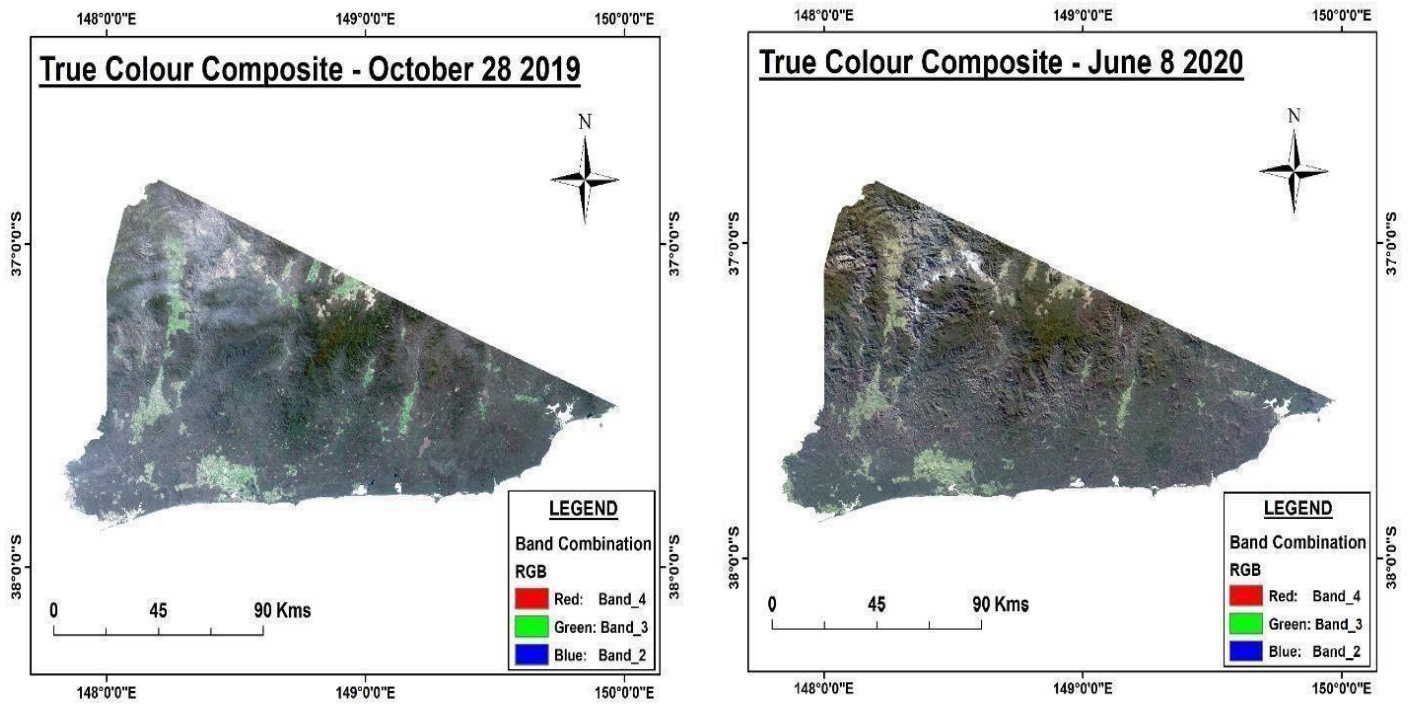
## **MATERIALS AND METHODS:**

NASA's (National Aeronautics and Space Administration) Landsat 8 OLI – TIRS multispectral imageries of 30m resolution (Sivakumar et al 2017, Ghosh et al 2015) were obtained from the USGS website namely EARTH EXPLORER, which are taken on 8<sup>th</sup> October of 2019 (Before Fire) and 28<sup>th</sup> June 2020 (After Fire). Below Table 1 gives the spectral bands and their properties of Landsat 8 image.

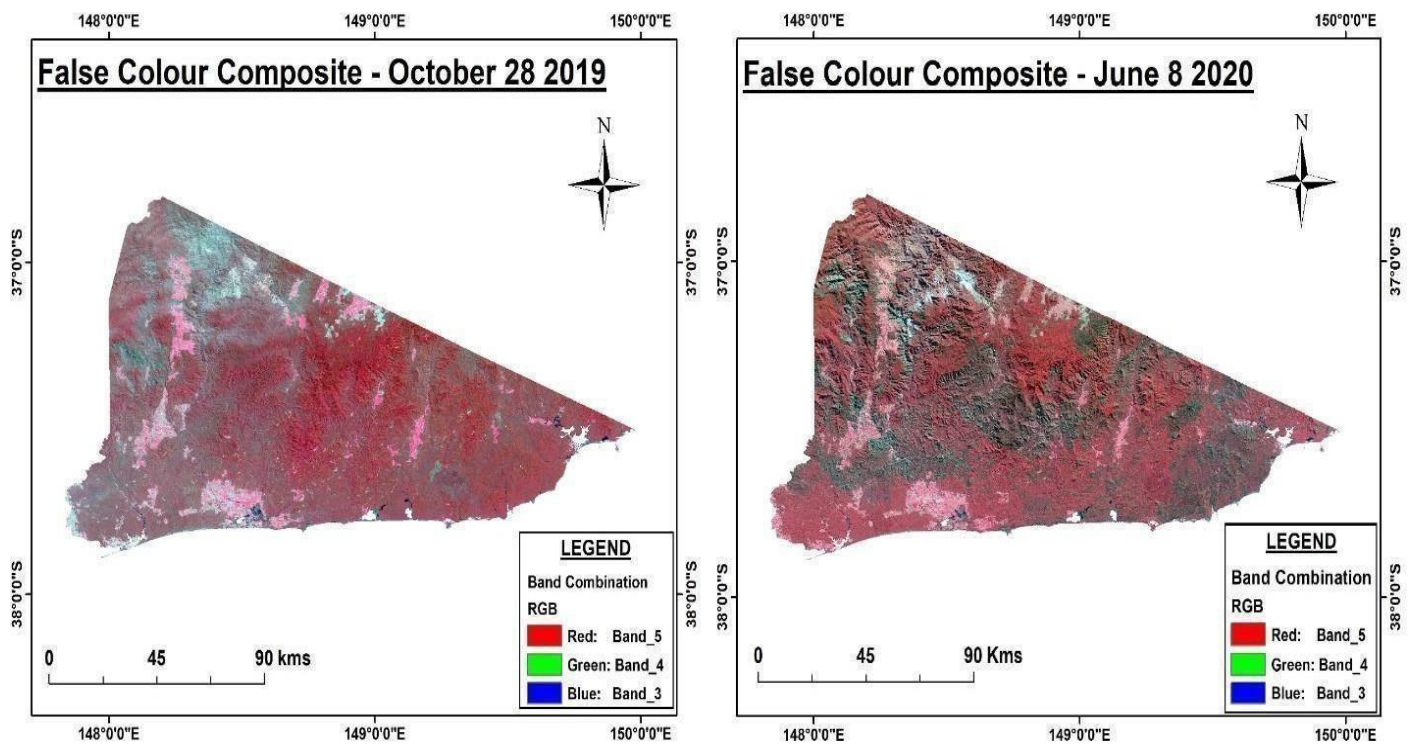
<b>Spectral Band</b>	<b>Solar Irradiance</b>	<b>Wavelength</b>	<b>Resolution</b>
<i>Band 1 Coastal/ Aerosol</i>	2031W/(m <sup>2</sup> μm)	0.443–0.453 μm	30m
<i>Band 2 Blue</i>	1925W/(m <sup>2</sup> μm)	0.450–0.515 μm	30m
<i>Band 3 Green</i>	1826W/(m <sup>2</sup> μm)	0.525–0.600 μm	30m
<i>Band 4 Red</i>	1574W/(m <sup>2</sup> μm)	0.630–0.680 μm	30m
<i>Band 5 Near Infrared</i>	995W/(m <sup>2</sup> μm)	0.845–0.885 μm	30m
<i>Band 6 Short Wavelength Infrared</i>	242W/(m <sup>2</sup> μm)	1.560–1.660 μm	30m
<i>Band 7 Short Wavelength Infrared</i>	82.5W/(m <sup>2</sup> μm)	2.100–2.300μm	30m
<i>Band 8 Panchromatic</i>	1739W/(m <sup>2</sup> μm)	0.500–0.680 μm	15m
<i>Band 9 Cirrus</i>	361W/(m <sup>2</sup> μm)	0.1360– 0.1390μm	30m

**Table 1.** Spectral band and their properties of Solar irradiance, Wavelength and Resolution

The obtained imageries are further registered in the Arc GIS environment to prepare the basemap for the study area. Both the Landsat datasets loaded into the ArcGIS (v10.2) to process the bands and get the land use classes for each image. By the RGB composite module in Arc GIS, the True (Natural) color composite (Fig 2 a & b) and False color composite maps (Fig 3 a & b) were produced using the bands of red, green and blue for each Landsat data set. This True color composite and False color composite maps are used to derive the impact assessment over the study area, which differentiates the affected and unaffected areas.



**Fig2(a)&(b).28<sup>th</sup> October 2019& 8<sup>th</sup>June 2020 True Color Composite Maps with the Band combination of (432)**



**Fig3 (a)&(b).28<sup>th</sup>October2019&8<sup>th</sup> June 2020 False Color Composite Maps with the Band Combination of (543)**

## NDVI CHANGE DETECTION:

NDVI (Normalized Difference Vegetation Index) change detection is carried out to analyze and establish the data's vegetative changes. The normalized difference vegetation index (NDVI) is a simple graphical indicator that can be used to analyze remote sensing measurements, often from a space platform, assessing whether or not the target being observed contains live green vegetation. This method can be analyzed with a formula given below, as for LANDSAT- 8 imageries Band5 (Near infrared band) and Band4 (Red band) are used.

$$\text{NDVI} = \frac{\text{Band5} - \text{Band4}}{\text{Band5} + \text{Band4}}$$

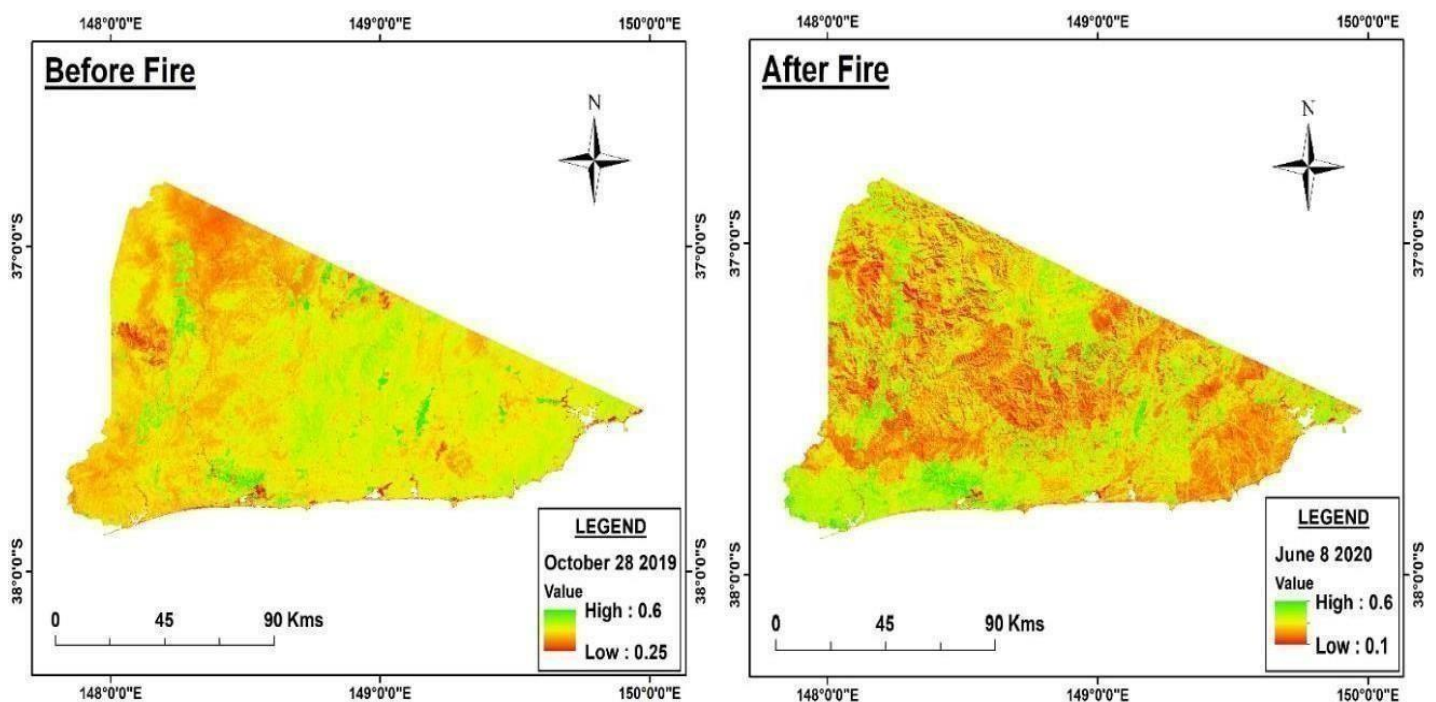


Fig4(a)&(b) NDVI Detection of Before and After Fire

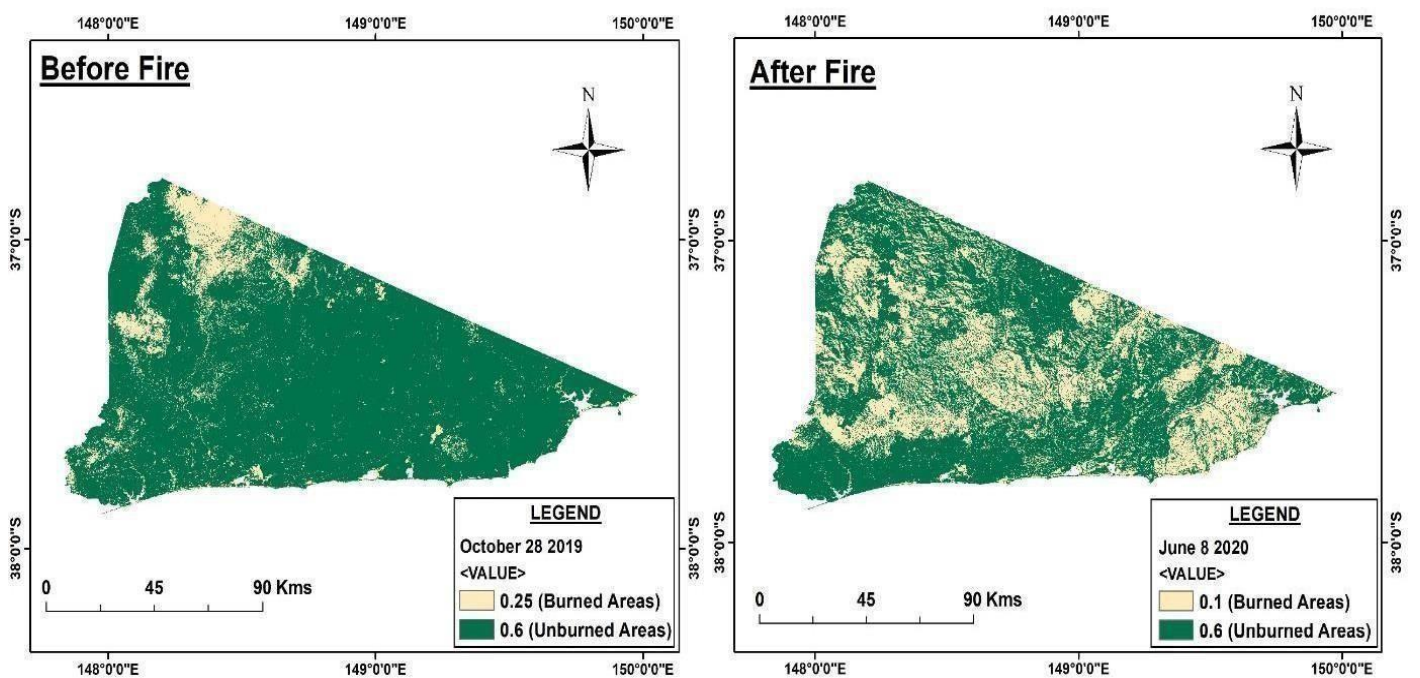


Fig5(a)&(b) NDVI Detection over the Burned Areas and Unburned area

The analysis on the data from Before and After fire Fig4(a)&(b) shows the range on the intensity of the fire as for Before fire the value ranges from 0.6 High to 0.25 Low and for After fire the value ranges from 0.6 High to 0.1 Low. A more distinctive analysis using color index indicating the Burned and Unburned areas Fig 5(a) &(b) shows a good view of impact happened around the study area.

**RESULTS AND DISCUSSION:**

Using the field calculator tool, the area of each land class is calculated for further analysis to identify the effect statistically. The results of the NDVI classification change are given in the Table 2 &3 for both before and after Fire. As the areas affected are interpreted by two objectives as Burned areas and unburned areas. As further the resulted data are also identified by using Bar graph is shown in Figure 9& 10. On October 28 2019 of Before Fire the Burned areas are calculated as 14408.12 km<sup>2</sup>, and unburned areas are calculated as 109610.6km<sup>2</sup>.

<u>S.NO</u>	<u>OBJECTIVES</u> <u>(BeforeFire)</u>	<u>AREA(in</u> <u>sq.kms)</u>
1	BurnedAreas	14408.12
2	Unburned Areas	109610.6

Table2. Amount of areas affected using NDVI Classification in square kilometers of before Fire

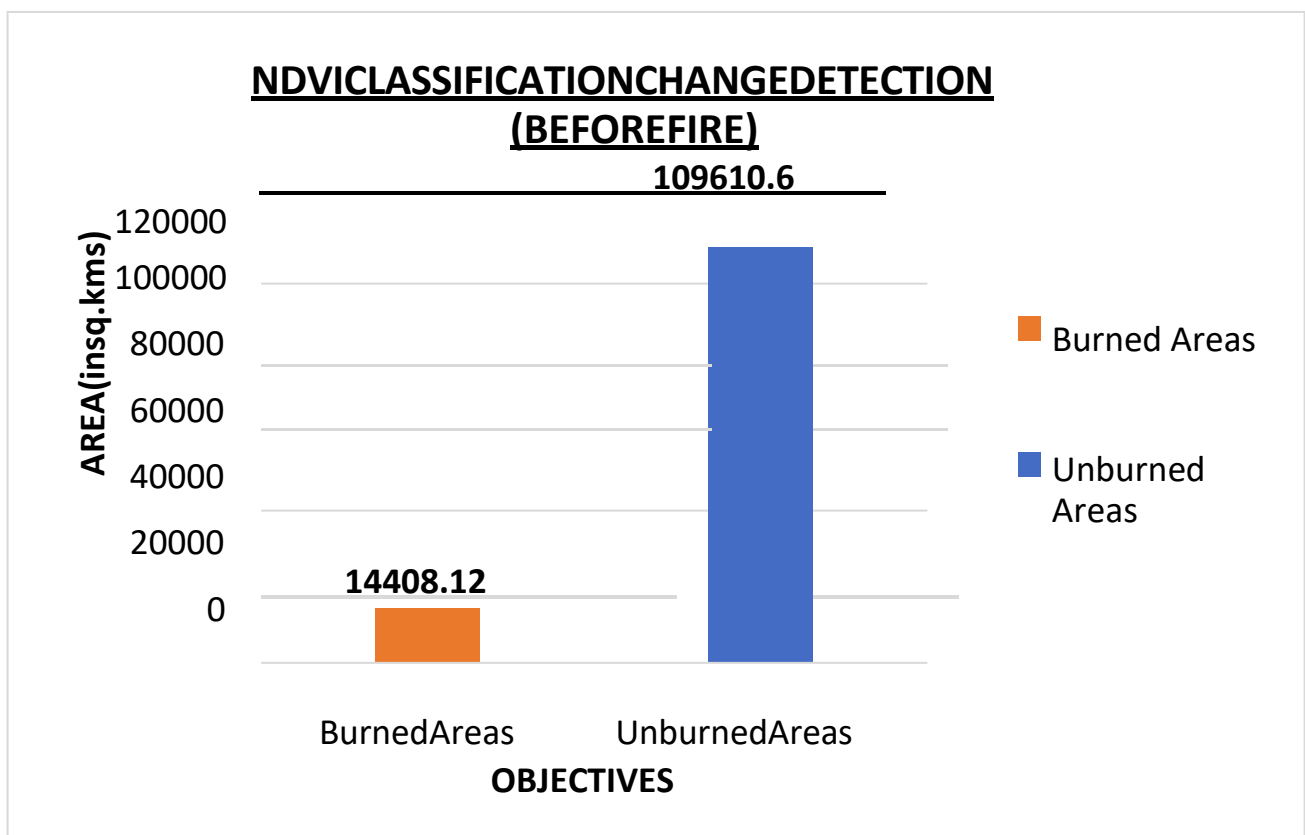


Fig9. Bar Graph of NDVI classification of Before Fire (October282019) establishing the amount of area affected in the study area

As, On June 8 2020 of After fire the Burned areas are calculated as 45802.13km<sup>2</sup>, and Unburned areas are calculated as 78451.92 km<sup>2</sup>. As it identifies that Burned areas is very much increased thus the intensity of the Bushfire affected much of the areas.

<u>S.NO</u>	<u>OBJECTIVES</u>	<u>AREA(insq.kms)</u>
1	Burned Areas	45802.13
2	Unburned Areas	78451.92

Table3. Number of Areas affected using NDVI Classification in square kilometers of After Fire

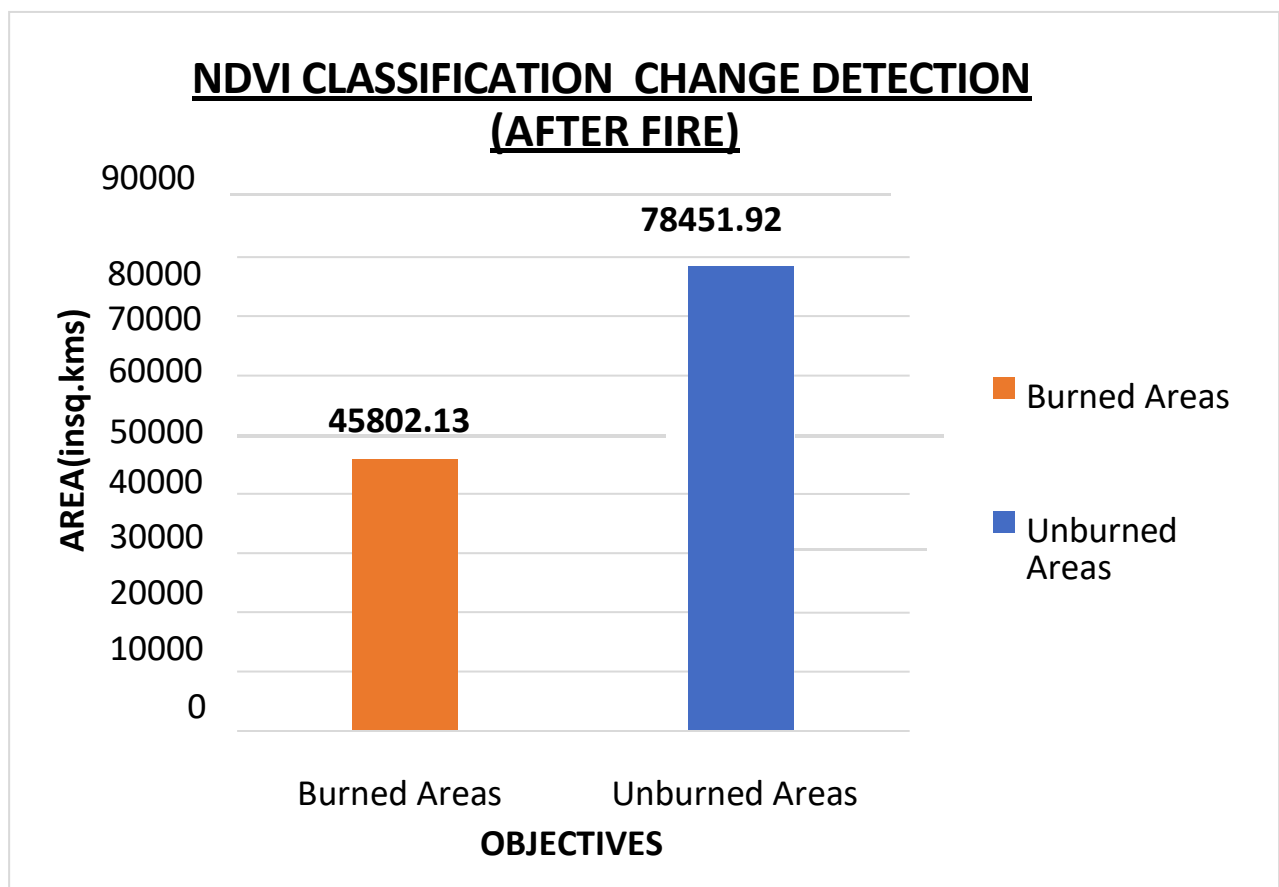


Fig10.BarGraph of NDVI classification of After Fire (June82020) establishing the amount of area affected in the study area

## **CONCLUSION:**

Bushfire are considered to be more vital when it got increased with aspects of more wind and dry climate which spreads the effect of the fire more quickly and more vigorously. As the results of the above study concludes that the burned areas are so much increased due to these effect so intensified fire and wind and also the dry climate/weather played a huge cause. Thus, these geospatial based methods are very much useful to identify the cause and damages of these kinds of catastrophically events, where human scan not be able to examine directly. Thus, from the above study, it can be inferred that in current scenario due to global warming and climate change, weather/climate play's important role on forest fire/bushfire events and its spread especially during summer season therefore its forecast should be warranted on daily basis during forest fire period. Still, lots of Forest fire/Bushfire events are occurring rapidly across the world, as 24/7 datasets of satellite images can be used to identify the prone areas creates ways to cease it from spreading. Thus, an integrated approach would ensure its prevention and mitigation such that the forest and the environment are safeguarded. Forests play a very vital role in reducing carbon emissions across the world, so the government and authorities should take an oath to safe guard them from these disastrous events.

## **REFERENCE:**

- 1] Alexander I. Filkov, Tuan Ngo, Stuart Matthews, Simeon Telfer, Trent D. Penman: Impact of Australia's catastrophic 2019/20 bushfires as on communities and environment. Retrospective analysis and current trends, Journal on Safety Science and Resilience, Vol 1 Issue 1, 2020, pp 44–56.
- 2] Meera Gandhi, G. S. Parthiban, Nagaraj Thummalu, Christy. A.: N-dvi: Vegetation change detection using Remote sensing and GIS – A case study of Vellore District ., Procedia Computer Science Journal, Vol 57, 2015, pp: 1199–1210.
- 3] Anne Ganteaume, Andrea Camia, Marielle Jappiot, Jesus San-Miguel-Ayanz, Marle`ne Long-Fournel, Corinne Lamp in: A Review of the Main Driving Factors of Forest Fire Ignition Over Europe., Environmental management 51, 2013, pp: 651–662.
- 4] Firoz Ahmad, Laxmi Goparaju, Abdul Qayum, and S. M. S. Quli: Forest fire trend analysis and effect of environmental parameters: A study in Jharkhand State of India using Geospatial Technology., World Scientific News, WSN 90, 2017, pp: 31–50.
- 5] A. C. Badea, G. Badea: Areas Affected by Wildfire in Thasos Island Using GIS., Rev CAD Journal of Geodesy and Cadastre, Vol 22, 2017, pp: 5–12.



- 6] Michael Visner, Sara Shirowzhan and Chris Pettit: Spatial Analysis, Interactive Visualisation and GIS-Based Dashboard for Monitoring Spatio-Temporal Changes of Hotspots of Bushfires over 100 Years in New SouthWales, Australia., Buildings Journal,2021,pp:11–37.
- 7] Nathalie Pettorelli, Sadie Ryan, Thomas Mueller, Nils Bunnefeld, Bogumila Jedrzejewska, Mauricio Lim, KyrreKausrud ; The Normalized Difference Vegetation Index (NDVI): Unforeseen Successes in Animal Ecology., Climate Research, 2011 Vol.46: 15 – 27.
- 8] Jagadish Jena, Sameer Ranjan Misra, Kailash Pati Tripathi ; Normalized Difference Vegetation Index (NDVI) and its role in Agriculture, Agriculture & Food: E-Newsletter., 2019, Vol:1, Issue:12 pp: 387 – 389.
- 9] FillippeTamiazzo Pereira Torres, Gumercindo Souza Lima, SebastiaoVenancio Martins, Bruna Paolinelli Reis; Use of Geographic Information Systems in Forest Fire Mapping in Southeastern of Brazil., Australian Journal of Basic and Applied Sciences, 2016, pp: 28 – 35.
- 10] MeriameMohajane, Romulus Costache, Firoozeh Karimi, Quoc Bao Pham, Ali Essahlaoui, Hoang Nguyen, Giovanni Laneve, FatihaOudija: Application of Remote sensing and Machine learning algorithms for Forest fire mapping in a Mediterranean area., Ecological Indicators, 2021, Vol 129.
- 11] Hilal Turgut, Bulent Turgut: The Effects of Landform and Climate on NDVI in Artvin, Turkey, eco.mont., 2022, Vol 14 pp:24 – 36.