

DETECTION OF PARKINSON'S USING MACHINE LEARNING TECHNIQUES

Anirudh Gupta¹, Anurag Bhatnagar^{1*} & Nikhar Bhatnagar²

^{1,1*}Department of Information Technology, Manipal University Jaipur, Jaipur

²Department of Information Technology, Manipal University Jaipur, Jaipur

^{1*}anurag.bhatnagar@jaipur.manipal.edu

¹anirudh.189302167@muj.manipal.edu

²nikharbhatnagar@gmail.com

ABSTRACT

Technology plays a crucial role in our lifestyle, healthcare, and resource and asset maintenance in this global era. Technology has been developing at a rapid rate to combat the various diseases and symptoms that are currently affecting the world. Parkinson's disease is one such condition. Parkinson's disease is a degenerative disorder that has far-reaching effects on the nervous system and all the parts of the body that it regulates. Large medical datasets are available in many data sources and are utilized to diagnose the illnesses. It is one of the most debilitating and chronic movement disorders. It is currently untreatable but is the second most disorders of the Nervous System that causes functional impairment and shortens life expectancy. Prediction is vital to patient recovery in the early phases. Machine learning can facilitate this procedure.

Keywords: Parkinson's disease, Machine learning, Decision tree, XGBoost

I. INTRODUCTION

Parkinson's disease (PD) is a condition of the degenerating nervous system that impairs movement by producing stiffness, tremor, and issues with balancing, coordinating, and moving. In most cases, Parkinson's disease begins with very modest symptoms before gradually worsening over time. It affects mostly people who are more than 50 years of age, there are also cases when people below that age also get affected with it and that cases is called young-onset Parkinson's or YOPD.

Technology plays an essential role in our lifestyle and in the field of health care, it has been developing at a rapid rate to combat the various diseases and symptoms that are currently affecting the world. Parkinson's disease is one such condition. A neurological condition affecting the brain, Parkinson's Disease. It also makes the body stiff and causes tremors in the hands and body. There is no effective treatment or cure available currently. Treatment is only possible when the condition is discovered early or at its onset. In addition to lowering the cost of the disease, these may also save lives. As a result, we employ numerous machine learning strategies and Python libraries to create a model that can accurately detect the presence of sickness in an individual's body. To diagnose disease, the current models rely on either image or audio analysis. We encourage the creation of a new model that uses both.

A. Objectives

Understanding Parkinson's disease and identifying the disease's early signs are the key goals.

B. Motivation of the Research

Even though Parkinson's One of the most terminal, untreatable, and neurodegenerative conditions is Parkinson's disease. It can't be cured or prevented. People suffer from it for a long time before they are diagnosed.

According to the anticipated outcomes, In the world, 7–10 million people suffer with Parkinson's disease. Even though people over 50 have a higher risk of developing Parkinson's disease, only about 4% of people under 50 are diagnosed with the disease. Death results if these symptoms are not discovered early on.

As a result, researchers have only discovered the symptoms and the underlying causes of the disease up to this point. However, very few symptoms have been alleviated, and many others remain unsolved. a screening method for the disease is urgently needed. It's crucial that we develop a way to anticipate it in its earliest phases.

C. Research Scope

The goals of this research are to (1) validate existing PD diagnostic tool identification methods, and (2) classify people as either healthy or affected by PD utilizing machine learning-based algorithms and techniques.

D. Proposed System

Machine learning techniques can handle the issue with the fewest possible errors. The UCI device acquiring library's Parkinson's disease audio dataset is used as input. When the spiral design inputs of people without Parkinson's and those with the condition are combined, our suggested strategy yields reliable findings. Due to the combination of all the impacts, the doctor can determine if anything is normal or abnormal and then give medication based only on the afflicted stage.

E. Overview of The Research

Movement is disrupted by Parkinson's disease, an emerging neurodegenerative disease, Parkinson's disease. A slight tremor in one hand may be the first indicator of a progressive set of symptoms. While tremors are characteristic of this disorder, stiffness or slowness of movement are also common. In the beginning of Parkinson's, your facial expressions may be flat. Maybe you shouldn't wander about with your hands outstretched. It may also cause your speech to become slurred or weak. Parkinson's disease symptoms grow as the disease progresses. Medications may dramatically increase your symptoms, and Parkinson's disease is currently untreatable. In severe cases, surgery to treat symptoms and regain function in affected areas of the brain may be advised by your doctor.

F. Problem Definition

In many cases, a neurological record of the patient and motor skill observations are necessary to find out if someone has Parkinson's Disease. When the diagnosis is first made and the motor consequences are not yet severe, it becomes more challenging for the clinician. In order to monitor the disease's progression over time, a patient needs to return to the clinic frequently. The efficient screening procedure can be more beneficial and does not necessitate a medical visit. Voice recordings are regarded as a useful diagnostic tool because Parkinson's disease sufferers have distinctive voice characteristics. Before seeing a doctor, using AI computations on the discourse dataset to precisely determine the illness might be a helpful screening step.

II. LITERATURE REVIEW

Parkinson's disease (PD) is typically identified through medical intervention and clinical signs, such as the description of motor symptoms. Traditional diagnostic techniques may be subject to subjectivity and misclassification since they depend on the evaluation of motions that are frequently imperceptible to human eye and hence challenging to discern.

As a result, these symptoms are frequently disregarded, making it challenging to make the importance of early Parkinson's disease.

These problems must be resolved to enhance the PD diagnosis and assessment processes, machine learning algorithms have been applied to categories PD and healthy controls or patients with similar clinical presentations. The primary objective of the suggested system is to get beyond the shortcomings of the current one and develop a system that is accurate enough to identify Parkinson disease in its earliest stages.[1]

In order to accurately and objectively diagnose the initial stages of Parkinson's disease have been studied utilizing deep dense ANNs (Artificial Neural Networks) applied to voice recordings and large-scale picture categorization of gait data turned into spectrograms.[2]

Using Logistic Regression, Random Forests, Boosted Trees, and Support Vector Machine, four machine learning methods that are gaining popularity in biomedicine, we develop a predictive model that can differentiate between early PD and healthy normal.

To assess the robotic learning methods, we performed validation on both a subject- and record-level. We discover that these techniques accurately and effectively (both >95%) discriminate between early PD and healthy normal. A statistically significant fit of the data by the logistic model indicated that predictions could be made using it. By using machine learning to combine the items in a questionnaire, these prediction models may be able to help physicians with the diagnostic process.[3]

We described a unique approach to Parkinson's disease identification based on the expression of facial features. First, we discussed the characteristics that could distinguish Parkinson's from the healthy control group.

The characteristics that described variations in how people expressed fear at the time were the most significant in

terms of statistics. In comparison to other classifiers, the XGBoost classifier excelled, achieving 0.69 total accuracy.

III. METHODOLOGY/ MATERIALS

Exploratory Data Analysis is the first attempt, A loaded and pre-processed dataset is ready for analysis. identify the crucial characteristics necessary for accurate models.

For this purpose, Feature Importance analysis is used. This is a group of methods that assign scores to each feature that is used in a prediction from the input data. The dataset can be better understood through feature importance analysis.

The features that are more relevant to the target are highlighted by the relative scores. A dataset-fitted predictive model determines the scores that are most significant. After setting up the information and acquiring significant understanding about significant highlights from the information is executing different demonstrating strategies. Using both the training data and the test data, the modeling techniques are put to the test to see how accurate the models are.

The following is a list of the various modeling methods suggested for use:

SUPPORT VECTOR MACHINE:

A new type of learning program called the Support Vector Machine is based on the most recent developments in mathematical learning vision. It is your algorithm, and it works with both linear and indirect data. Converts the original data to a higher magnitude, from which it uses important training tuples known as support vectors to locate the topflight of data segmentation. Separating the hyper plane officially defines the discriminatory category known as the Support Vector Machine. This distance is called a functional margin because it usually reduces the separator generalization error. The useful data that is created is then used with the preloaded SVM algorithm.

XGBOOST:

XGBOOST is a software algorithm. Recently, this has dominated applied technology education. An implementation of gradient-boosted choice timber is the XGBoost set of rules. That evolved into the design for overall performance and speed.

Code: Importing the NumPy, Pandas, Sklearn, and XGBoost libraries

IV. IMPLEMENTATION

The basic flow of data through the various Parkinson's disease detection steps is depicted in the Data flow diagram.

In the initial step we will gather information like from the patient with various clinical hardware.

The process for training the data, which will be classified using various ML algorithms, is now sending the collected data.

The Train and Test datasets will be sent to determine whether a patient has the disease after they have been classified.

In this article, we use machine learning to forecast Parkinson's disease by explaining several different approaches.

- Data Collection
- Pre-processing
- Model Selection
- Choosing a model through training
- Evaluation
- Forecasting

We will construct a model employing an XGB Classifier in this Python machine learning project by making use of the Python libraries scikit-learn, numpy, pandas, and XG boost. It is an illness that affects the nerve system. This disease affects approximately 1 million people worldwide today. Neurodegenerative dopamine-producing neurons are produced in the brain because of this disorder. The body's symptoms can be detected by the following system.

The project will be made by another AI calculation called the XG Boost. The XG Boost algorithm was created with a focus on optimising speed and performance within the realm of machine learning. XG Boost represents Outrageous Slope Supporting and depends on decision trees. We will import the XGB Classifier from the XG boost library into this project; to develop a model that can precisely determine whether a person has Parkinson's disease.

- ARCHITECTURE DIAGRAM
- DATA-FLOW-DIAGRAM
- ER-DIAGRAM
- SEQUENCE DIAGRAM

ARCHITECTURE DIAGRAM:

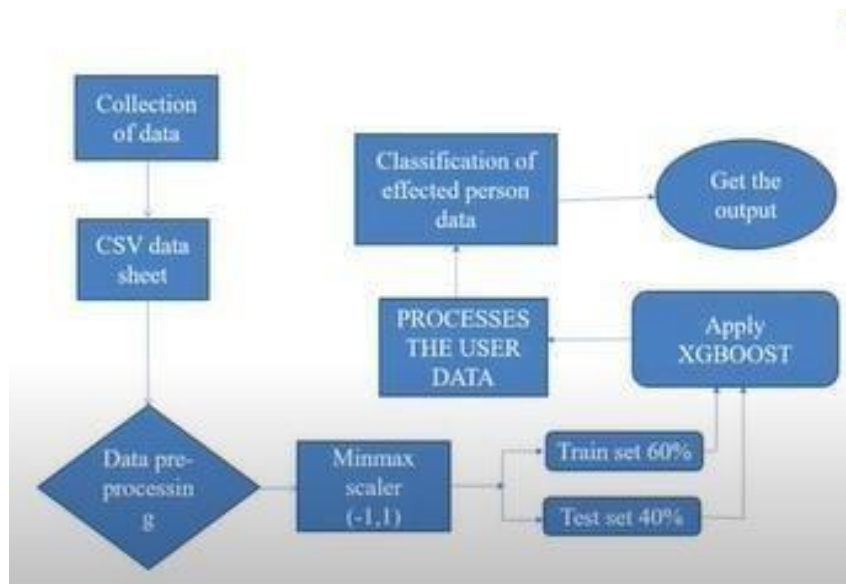


Fig.1 Architecture Diagram

DATA FLOW DIAGRAM:

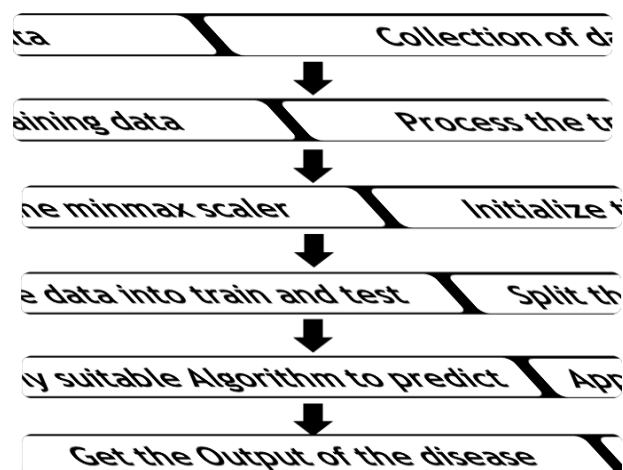


Fig.2. Data Flow Diagram

ER DIAGRAM:

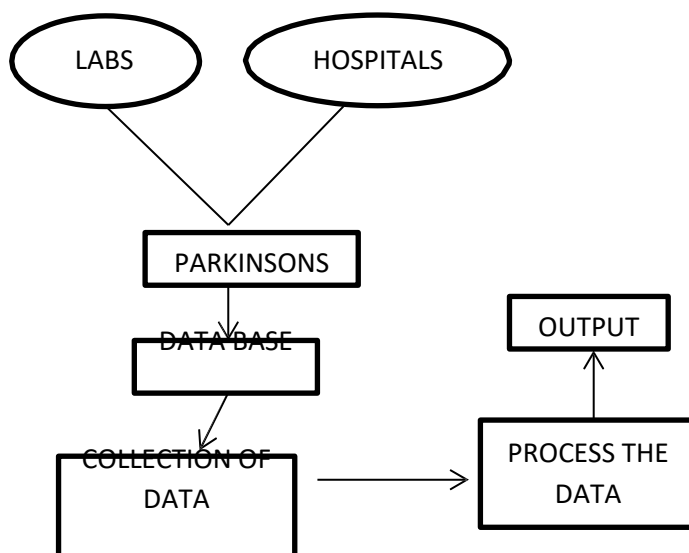


Fig.3. ER Diagram

SEQUENCE DIAGRAM:

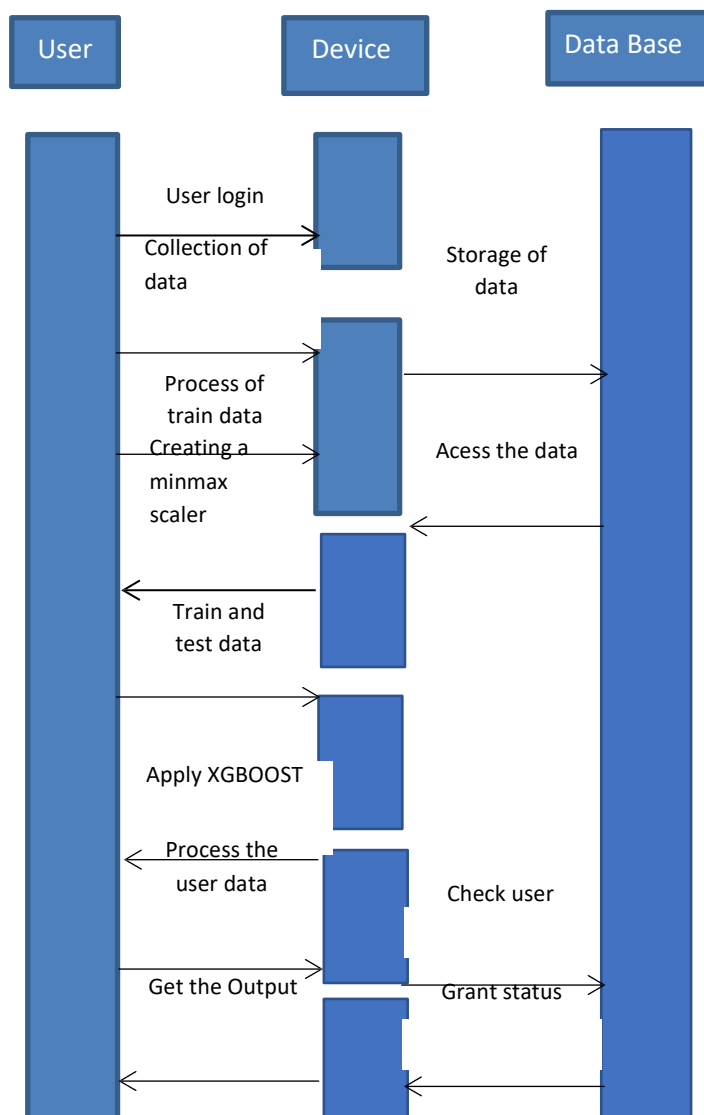


Fig.4. Sequence Diagram

V. TESTING

- TESTING OF UNITS
- TESTING FOR INTEGRAION
- FUNCTIONAL EVALUTIONS

TESTING OF UNITS:

During this phase of software testing, a thorough examination of individual modules and components is conducted. The proposed initiative involves the collection and evaluation of an individual's data. Upon examination of data from a singular entity, the precision is recorded at 100%.

TESTING FOR INTEGRAION

This could refer to a stage of software testing where discrete components are integrated and evaluated as whole. In the proposed framework, the information is collected and analysed. The precision is 94.87%. This testing will examine the entire endeavour at once. It reduces the duration and difficulty of integration examination.

FUNCTIONAL EVALUTIONS:

Software testing of this type confirms the program's compliance with its functional specifications and requirements. This test uses a machine learning algorithm to identify Parkinson's disease. The ML algorithm will boost productivity.

The following steps are often included in functional testing:

- Determining the expected functionality of the software.
- Generate input data in accordance with the function's requirements.
- The parameters of the function are used to determine the outcome.
- Run the test instance.
- Evaluate actual and predicted outcomes.

VI. THE INPUT - OUTPUT

	A	B	C	D	E	F	G	H	I	J	K	L	M	N	O	P	Q	R	S	T	U	V
1	name	MOV Fx	MOV Fy	MOV Fz	MOV Fx	MOV Fy	MOV Fz	RA	RA	RA	PP	PP	PP	PP	PP	PP	PP	PP	PP	PP	PP	PP
2	phon_R01	119.952	157.302	74.997	0.00784	0.00007	0.00370	0.00254	0.01129	0.04374	0.42000	0.02182	0.03130	0.02971	0.00545	0.02211	21.033	1	0.414783	0.815285	-4.813031	0.206402
3	phon_R01	122.4	148.65	113.219	0.00968	0.00008	0.00485	0.00898	0.01394	0.06134	0.62000	0.03134	0.04518	0.04068	0.00403	0.01629	19.085	1	0.458359	0.816521	-4.075192	0.336590
4	phon_R01	116.682	131.111	111.555	0.01050	0.00009	0.00544	0.00781	0.01633	0.02533	0.48200	0.02757	0.03858	0.03590	0.00270	0.01309	20.651	1	0.429895	0.825288	-4.443179	0.311173
5	phon_R01	116.676	137.871	111.366	0.00997	0.00009	0.00502	0.00898	0.01505	0.05480	0.51700	0.02904	0.04005	0.03772	0.00771	0.01353	20.644	1	0.434969	0.819235	-4.117501	0.334147
6	phon_R01	116.014	141.781	110.655	0.01284	0.00011	0.00555	0.00908	0.01966	0.06425	0.58400	0.03490	0.04825	0.04480	0.00470	0.01787	19.649	1	0.417356	0.823484	-3.747787	0.234513
7	phon_R01	120.562	131.162	113.787	0.00968	0.00008	0.00463	0.00750	0.01388	0.04701	0.45000	0.02328	0.03526	0.02243	0.00885	0.01222	21.378	1	0.415564	0.825389	-4.242867	0.299111
8	phon_R01	120.267	137.244	114.82	0.00333	0.00003	0.00155	0.00202	0.00486	0.01608	0.14000	0.00779	0.00937	0.01351	0.02337	0.00607	24.886	1	0.590040	0.784112	-5.034322	0.257882
9	phon_R01	107.332	113.84	104.315	0.00290	0.00001	0.00144	0.00182	0.00431	0.01567	0.13400	0.00829	0.00946	0.01256	0.02487	0.00344	26.892	1	0.637420	0.763262	-6.167003	0.183721
10	phon_R01	95.73	132.068	91.754	0.00551	0.00006	0.00293	0.00332	0.00880	0.02980	0.19100	0.01073	0.01377	0.01717	0.03218	0.01070	21.812	1	0.615551	0.773587	-5.498878	0.327769
11	phon_R01	95.056	120.103	91.226	0.00532	0.00008	0.00288	0.00332	0.00803	0.02836	0.25500	0.01441	0.01725	0.02444	0.04324	0.01022	21.862	1	0.547037	0.798403	-5.011879	0.325996
12	phon_R01	88.333	112.34	84.072	0.00505	0.00006	0.00254	0.00330	0.00783	0.02143	0.18700	0.01079	0.01342	0.01882	0.03237	0.01186	21.118	1	0.611137	0.778156	-5.248777	0.301002
13	phon_R01	91.904	115.871	86.292	0.00540	0.00008	0.00281	0.00336	0.00844	0.02752	0.24900	0.01424	0.01641	0.02214	0.04372	0.01141	21.414	1	0.583390	0.792520	-4.960234	0.363566
14	phon_R01	136.926	158.886	131.276	0.00293	0.00002	0.00118	0.00153	0.00255	0.01259	0.11200	0.00956	0.00717	0.01140	0.01968	0.00581	25.703	1	0.460600	0.848846	-6.547148	0.152813
15	phon_R01	139.173	179.139	76.556	0.00390	0.00003	0.00165	0.00238	0.00496	0.01642	0.15400	0.00728	0.00832	0.01797	0.02184	0.01041	24.889	1	0.430166	0.865833	-5.680217	0.254989
16	phon_R01	152.845	163.305	75.836	0.00294	0.00002	0.00121	0.00149	0.00364	0.01828	0.15800	0.01064	0.00972	0.01248	0.03191	0.00809	24.922	1	0.474791	0.854027	-6.195898	0.203653
17	phon_R01	142.167	217.455	83.159	0.00389	0.00003	0.00157	0.00203	0.00471	0.01503	0.12600	0.00772	0.00888	0.01359	0.02316	0.00836	25.175	1	0.565804	0.858245	-5.340115	0.219185
18	phon_R01	144.188	349.259	82.764	0.00544	0.00004	0.00211	0.00282	0.00632	0.02047	0.19200	0.00869	0.01200	0.02074	0.02908	0.01859	22.333	1	0.567380	0.844892	-5.44804	0.236784
19	phon_R01	168.778	232.181	75.603	0.00718	0.00004	0.00284	0.00387	0.00853	0.03327	0.34800	0.01441	0.01880	0.04300	0.04322	0.02919	20.376	1	0.631099	0.805417	-2.931077	0.434326
20	phon_R01	153.048	175.829	88.823	0.00742	0.00005	0.00364	0.00432	0.01082	0.05517	0.54200	0.02471	0.03072	0.05787	0.07413	0.03180	17.28	1	0.665318	0.719487	-3.948079	0.357870
21	phon_R01	156.405	189.398	142.022	0.00768	0.00005	0.00372	0.00399	0.01116	0.03995	0.34800	0.01721	0.02374	0.04310	0.05164	0.03385	17.153	1	0.649554	0.688000	-4.554486	0.348176
22	phon_R01	153.848	165.736	85.792	0.00640	0.00005	0.00428	0.00450	0.01285	0.02010	0.32800	0.01687	0.02385	0.04025	0.05000	0.03671	17.536	1	0.660125	0.784087	-4.095442	0.262564
23	phon_R01	153.88	172.86	78.128	0.00480	0.00003	0.00232	0.00267	0.00896	0.04137	0.37000	0.02021	0.02591	0.04525	0.06862	0.01849	19.493	1	0.629017	0.688651	-5.18896	0.237822
24	phon_R01	167.93	183.221	79.968	0.00442	0.00003	0.00220	0.00247	0.00861	0.04381	0.37700	0.02228	0.02540	0.04248	0.06885	0.01280	22.468	1	0.619880	0.679834	-4.330956	0.262584
25	phon_R01	173.917	192.735	86.18	0.00478	0.00003	0.00221	0.00258	0.00863	0.04182	0.36400	0.02187	0.02470	0.03772	0.06982	0.01840	20.422	1	0.537264	0.688684	-5.248776	0.210279
26	phon_R01	163.856	200.841	76.779	0.00742	0.00005	0.00380	0.00390	0.01140	0.01859	0.18400	0.00738	0.00848	0.01497	0.02314	0.01778	23.831	1	0.597937	0.752479	-5.571447	0.228080
27	phon_R01	104.4	206.002	77.968	0.00633	0.00006	0.00316	0.00375	0.00848	0.03787	0.38100	0.01732	0.02245	0.03780	0.05157	0.02887	22.866	1	0.522748	0.737948	-5.571843	0.238853
28	phon_R01	171.041	208.313	75.501	0.00455	0.00003	0.00250	0.00234	0.00750	0.01886	0.18800	0.00889	0.01189	0.01872	0.02966	0.01095	25.908	1	0.418822	0.720816	-8.18359	0.226378
29	phon_R01	148.845	208.701	81.737	0.00496	0.00003	0.00250	0.00275	0.00749	0.01919	0.18800	0.00883	0.01144	0.01828	0.02650	0.01328	25.119	1	0.388273	0.728652	-4.27189	0.196102
30	phon_R01	155.358	227.383	80.953	0.00310	0.00002	0.00159	0.00178	0.00478	0.01718	0.18100	0.00789	0.01012	0.01881	0.02267	0.00877	25.817	1	0.470478	0.678258	-7.128925	0.239789
31	phon_R01	162.568	198.348	77.83	0.00502	0.00003	0.00280	0.00253	0.00841	0.01791	0.18800	0.00782	0.01057	0.01799	0.02380	0.01170	25.678	1	0.427785	0.723787	-6.632729	0.208886
32	phon_R01	167.676	204.896	83.076	0.00786	0.00001	0.00186	0.00188	0.00488	0.01888	0.38700	0.00943	0.00880	0.01086	0.01086	0.00378	36.725	0	0.420798	0.741767	-7.3481	0.172551

Fig.5. Data set

It is suggested that in forthcoming studies, the utilization of both audio and REM sleep data be considered for enhanced outcomes, as the use of solely audio data is deemed inadequate as a biomarker for the classification of Parkinson's disease. It is anticipated that the outcomes of this study will encourage the utilization of mobile recorded audio for the purpose of Parkinson's disease classification through telemedicine.

X. CONCLUSION

In this study, we attempt to create a Parkinson's disease diagnostic model. In this research, we evaluated different feature measurements and classifiers to identify healthy individuals from Parkinson's sufferers. There is currently no recognized treatment for Parkinson's disease, a brain disorder that affects the central nervous system (CNS). A lack of treatment and death result from late detection. Consequently, early detection is essential. For early disease detection, we utilized machine learning algorithms like SVM (Support Vector Machine), Decision Tree, Random Tree Classifier, and neural networks due to their efficiency and quick retrieval. Most importantly, speech processing has a lot of potential for detecting, categorizing, and diagnosing Parkinson's disease. We anticipate that more medical tools and technologies based on machine learning will soon be available to save people from this disease.

REFERENCES

- [1] "Parkinson Disease Detection Using Deep Neural Networks", Shivangi, Anubhav Johri and Ashish Tripathi, Department of Computer Science, Jaypee Institute of Information Technology Noida, India.
- [2] Prashanth R, Dutta Roy S, Early Detection of Parkinson's Disease through Patient Questionnaire and Predictive Modelling, International, Journal of Medical Informatics (2018), <https://doi.org/10.1016/j.ijmedinf.2018.09.008>
- [3] Justyna Skibińska, Radim Burget, "Parkinson's Disease Detection based on Changes of Emotions during Speech", Brno University of Technology Brno, Czech Republic, 2020 12th International Congress on Ultra-Modern Telecommunications and Control Systems and Workshops (ICUMT)
- [4] Zahari Abu Bakar, Nooritawati Md Tahir and Ihsan MYassin, "Classification of Parkinson's Disease Based on Multilayer Perceptron Neural Network", 2010 6th International Colloquium on Signal Processing & Its Applications (CSPA).
- [5] Parkinson's disease clinical features and diagnosis by Annett Blochberge and Shelley Jones, Vol 3, December 2011. [6]
<https://www.kaggle.com/margot234/parkinsons-disease-dataset>
- [7] Kalia, L.V.; Lang, A.E. Parkinson's Disease. *Lancet* 2015, 386, 896–912.
- [8] D. Heisters, "Parkinson's: symptoms treatments and research", vol. 20, no. 9, pp. 548-554, 2011.
- [9] Srishti Grover, Saloni Bhartia, Akshama, Abhilasha Yadav, Seeja K. R. "Predicting Severity of Parkinson's Disease Using Deep Learning", International Conference on Computational Intelligence and Data Science (ICCIDIS 2018). *Procedia Computer Science* 132 (2018) 1788–1794.
- [10]
<https://www.kaggle.com/margot234/parkinsons-disease-dataset>
- [11]
<https://archive.ics.uci.edu/ml/datasets/parkinsons>
- [12] Shrihari K Kulkarni¹, K R Sumana², "Detection of Parkinson's Disease Using Machine Learning and Deep Learning Algorithms" *International Journal of Engineering Science Invention (IJESI)* ISSN (Online): 2319 – 6734, ISSN (Print): 2319 – 6726 VOLUME 8 ISSUE:8, (AUG 2021)-Page No :1189-1192.
- [13] Yatharth Nakul¹, Ankit Gupta², Hritik Sachdeva³, "Parkinson Disease Detection Using Machine Learning Algorithms" *International Journal of Science and Research (IJSR)* ISSN: 2319-7064 SJIF (2020): 7.803 Volume 10 Issue 6, June 2021-Page no 314-318.
- [14] Wu Wang¹, Junho Lee², Fouzi harrou³ and Ying sun⁴, "Early Detection of Parkinson's Disease Using Deep Learning and Machine Learning" *IEEE ACCESS* Digital Object Identifier 10.1109/ACCESS.2020.3016062 Volume 8, 2020-Page no 147635- 147646.

- [15] Muthumanickam S1, Gayathri J2, Eunice Daphne J3,, “Parkinson’s Disease Detection And Classification Using Machine Learning And Deep Learning Algorithms– A Survey”, International Journal of Engineering Science Invention (IJESI) ISSN (Online): 2319 – 6734, ISSN (Print): 2319 – 6726 www.ijesi.org ,Volume 7 Issue 5 Ver. 1, May 2018 || PP 56-63.
- [16] Timothy J. Wroge¹, Yasin Ozkanca², Cenk Demiroglu³, Dong Si⁴, David C. Atkins⁵ and Reza Hosseini Ghomi⁶,, “Parkinson’s Disease Diagnosis Using Machine Learning and Voice”, Conference: 2018 IEEE Signal Processing in Medicine and Biology Symposium||DOI:10.1109/SPMB.2018.8615607.
- [17] Jayashree R.J., Ganesh S., Karanth S.C., Lalitha S. (2021) Automatic Detection of Parkinson Speech Under Noisy Environment. In: Thampi S.M., Gelenbe E., Atiquzzaman M., Chaudhary V., Li K.C. (eds) Advances in Computing and Network Communications. Lecture Notes in Electrical Engineering, vol 736. Springer, Singapore. https://doi.org/10.1007/978-981-33-6987-0_16.
- [18] Mahlknecht, P.; Krismer, F.; Poewe, W.; Seppi, K. Meta- Analysis of Dorsolateral Nigral Hyperintensity on Magnetic Resonance Imaging as a Marker for Parkinson’s Disease. *Mov. Disord.* 2017, 32, 619–623.
- [19] Dickson, D.W. Neuropathology of Parkinson disease. *Parkinsonism Relat. Disord.* 2018, 46 (Suppl. 1), S30–S33. [20] Kalia, L.V.; Lang, A.E. Parkinson’s Disease. *Lancet* 2015, 386, 896–912.
- [21] D. Heisters, "Parkinson's: symptoms treatments and research", vol. 20, no. 9, pp. 548-554, 2011.
- [22] Arvind Kumar Tiwari, “Machine Learning based Approaches for Prediction of Parkinson’s Disease,” *Machine Learning and Applications- An International Journal (MLAU)* vol. 3, June 2016.
- [23] Gil, D. and Johnson, M. (2009) Diagnosing Parkinson by Using Artificial Neural Networks and Support Vector Machines. *Global Journal of Compute Science and Technology*, 9, 63-71
- [24] M. Abdar and M. Zomorodi-Moghadam, “Impact of Patients’ Gender on Parkinson’s disease using Classification Algorithms” *Journal of AI and Data Mining*, vol. 6, 2018.
- [25] Prediction of Parkinson’s Disease using Machine Learning Techniques on Speech dataset, Basil K Varghese, Geraldine Bessie Amali D, Uma Devi K S, Volume - 12, Issue - 2, Year – 2019.
- [26] W. Wang, J. Lee, F. Harrou and Y. Sun, "Early Detection of Parkinson’s Disease Using Deep Learning and Machine Learning," in *IEEE Access*, vol. 8, pp. 147635-147646, 2020, doi: 10.1109/ACCESS.2020.3016062.
- [27] R. Alkhatib, M. O. Diab, C. Corbier and M. E. Badaoui, "Machine Learning Algorithm for Gait Analysis and Classification on Early Detection of Parkinson," in *IEEE Sensors Letters*, vol. 4, no. 6, pp. 1-4, June 2020, Art no. 6000604, doi: 10.1109/LSENS.2020.2994938.
- [28] P. Raundale, C. Thosar and S. Rane (2021), "Prediction of Parkinson’s disease and severity of the disease using Machine Learning and Deep

Learning algorithm," 2021 2nd International Conference for Emerging Technology (INCET), pp. 1-5, doi: 10.1109/INCET51464.2021.9456292. [29] Y. Guan (2021), "Application of logistic regression algorithm in the diagnosis of expression disorder in Parkinson's disease," 2021 IEEE 2nd International Conference on Information Technology, Big Data and Artificial Intelligence (ICIBA), 2021, pp. 1117-1120, doi: 10.1109/ICIBA52610.2021.9688135.

[30] D. Yadav and I. Jain (2022), "Comparative Analysis of Machine Learning Algorithms for Parkinson's Disease Prediction," 2022 6th

International

Conference on

10.1109/ICICCS53718.2

022.9788354

[31] Hamid KarimiRouzbahani and Mohammad Reza Daliri, "Diagnosis of Parkinson's Disease in Human Using Voice Signals", Biomedical

Engineering Department Iran University of Scienceand Technology

(IUST), Tehran, Iran, 2(3), pp 12- 20,2011.

[32] Anitha R1, Nandhini T2, Sathish Raj S3 and Nikitha V4, "Early detection of parkinson's disease using machine learning", 6(2), pp.

[33] C K GOMATHY, B. DHEERAJ KUMAR REDDY, Ms. B. VARSHA and B. VARSHINI, "The parkinson's disease detection using machine

learning techniques", International Research Journal of Engineering and

Technology (IRJET), 8(10), pp 440- 444,2021.